

---

# *University of Illinois Student Data Book*

---

*Fall Term 2000  
With a Ten-Year Overview*

*Prepared by the  
University Office for Academic Policy Analysis*

*February 2001*

*This report is available through the University Office for Academic Policy Analysis;  
807 S. Wright - Suite 370; Champaign, IL 61820; phone: 217-333-1171.*

---

## UNIVERSITY OF ILLINOIS AT CHICAGO

---

### TABLE OF CONTENTS

CAMPUS ENROLLMENTS	Page
Highlights .....	1
By Level .....	2
Undergraduates by Admission Category .....	3
Undergraduates by College .....	4
Graduates by College .....	5
By Level and Gender .....	6
Undergraduates by College and Gender .....	7
By Level and Race/Ethnicity .....	9
Percent Distribution by Race/Ethnicity .....	10
Geographic Origin of International Students .....	13

### NEW STUDENT CHARACTERISTICS

Highlights .....	15
Beginning Freshmen by College of Entry .....	16
New Transfers by College of Entry .....	17
Beginning Freshmen by HSPR Distribution .....	18
Beginning Freshmen by ACT:C Scores .....	19
Beginning Freshman Characteristics .....	20
New Transfer Student Characteristics .....	21
New Professional/Graduate Student Characteristics .....	22

### ACADEMIC PERFORMANCE

Highlights .....	27
Retention Patterns for Beginning Freshmen .....	28
Retention Patterns of 1980, 1989, and 1995 Transfer Cohorts .....	30
Retention by Class Level of 1989 and 1995 Transfer Cohorts .....	31

### DEGREES CONFERRED

Highlights .....	33
By Level .....	34
Undergraduates by College .....	35
By Level and Gender .....	36
By Race/Ethnicity .....	37

### LIST OF FIGURES

CAMPUS ENROLLMENTS	Page
Trend by Level .....	2
Trend by New Student Category .....	3
Change from 1990 to 2000 by Undergraduate College .....	4
Undergraduate, Graduate, and Professional Trends by Gender .....	6
Undergraduate Distribution by College and Gender .....	8
Undergraduate and Graduate Trends by Race/Ethnic .....	11
Undergraduates by Geographic Origin .....	12
Professionals and Graduates by Geographic Origin .....	12

### NEW STUDENT CHARACTERISTICS

Freshmen by HSPR Quartiles .....	18
Freshmen by County of Origin .....	23
Transfers by Sending Community College .....	24
Freshmen by Geographic Origin .....	25
Professionals and Graduates by Geographic Origin .....	25

### ACADEMIC PERFORMANCE

Freshmen Retention by Race/Ethnicity .....	29
Retention of 1980, 1989, and 1995 Transfer Cohorts .....	30
Retention by Class of 1989 and 1995 Transfer Cohorts .....	31

### DEGREES CONFERRED

Change from 1990 to 2000 by Level .....	34
Change from 1990 to 2000 in Bachelor's Degrees by College .....	35
By Level and Gender .....	36

## EXPLANATORY NOTES FOR RETENTION AND GRADUATION

---

*Graduation and retention rates are the result of many variables including academic performance, academic preparation, motivation, and academic integration. Other factors which seem to influence graduation and retention include part/full-time attendance, student age, family responsibilities, commuter/resident attendance, first-generation college attendance, socioeconomic status, employment, and indebtedness. The extent to which these factors combine and contribute to graduation and retention is not fully understood, but there is a considerable body of research, which has documented the complexities of the issue.*

*Throughout recent history the graduation rate of students in the United States who enter a university as beginning freshmen and earn bachelor's degrees from that same university four to six years later is approximately 50 percent. A freshman class with higher average ability, motivation, preparation; greater full-time attendance, etc. will graduate at higher rates than that average. The reverse is also true.*

*However, there are no hard and fast prediction models. The intervening variables are numerous and interrelated. For example, high motivation certainly can overcome under-preparedness just as low motivation can negate high ability. Better academic preparation may be the result of high academic ability or the consequence of higher socioeconomic status and thus a more positive high school environment.*

*It is tempting to compare institution-wide graduation rates among universities without accounting for the makeup of the student body. The reader is cautioned not to make blanket comparisons, for example, in the graduation and retention rates provided in this Data Book for the University of Illinois campuses. The student bodies of the campuses are different, and thus comparisons among the three would parallel the proverbial apples-to-oranges relationship.*

*One other caveat should be emphasized: Retention data presented in this and in previous Data Books were gathered from several different studies, each employing a slightly different methodology. The footnotes section of each table describes the definitions used for that table.*

# Campus Enrollments

## UIC

---

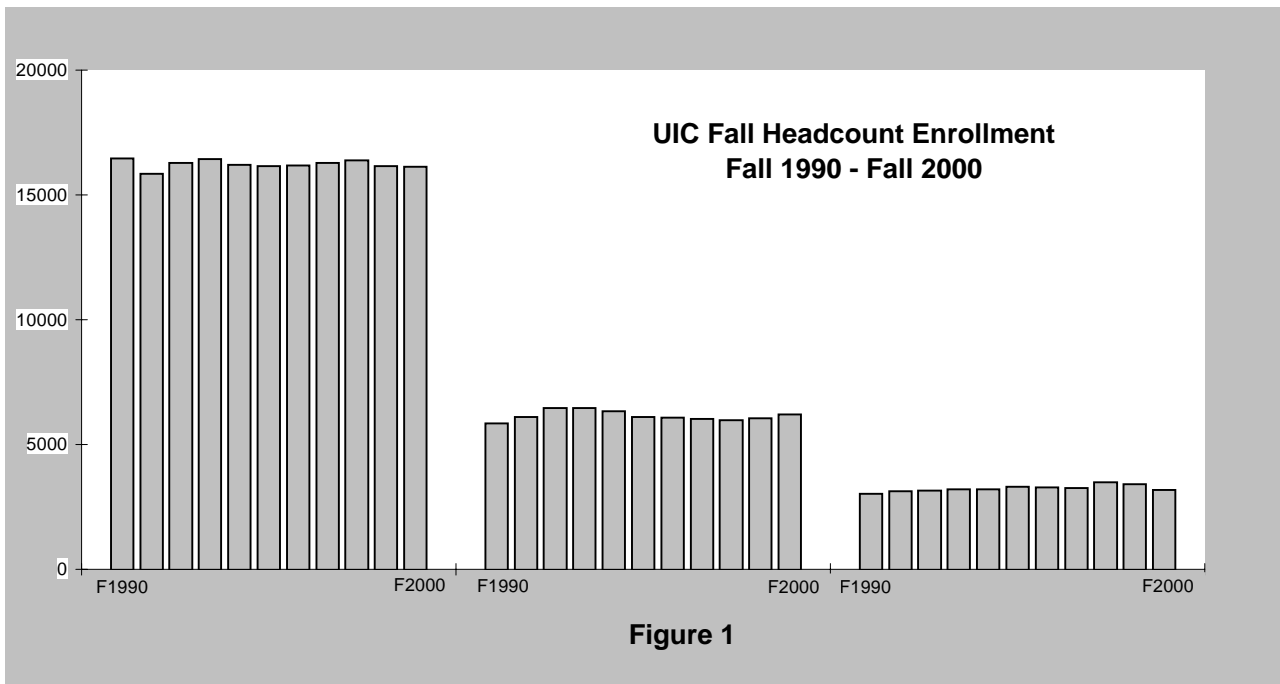
### HIGHLIGHTS

- *Fall 2000 total enrollment on the Chicago campus numbered 25,522, 103 students below last fall. Throughout the ten-year period enrollment varied no more than 500 students above or below the number for fall 2000. See Table 1 and Figure 1.*
- *As indicated in Table 2 and Figure 2, the number of beginning freshmen is higher than last year by more than 200 students with 2,843 in fall 2000. The number of continuing students has grown by a thousand throughout the decade with this fall just a few students lower than last fall.*
- *The College of Liberal Arts and Sciences enrolls more undergraduates than all other colleges combined and enrolled more students in fall 2000 than last year or ten years earlier. See Table 3 and Figure 3.*
- *Graduate I enrollment, generally master's students, is up to over 3,800 students and the highest number in the last six years. The College of Engineering enrolls the most Graduate I students. Graduate II enrollment, doctoral candidates, is concentrated in the College of Liberal Arts and Sciences where 40 percent are enrolled. See Table 4.*
- *Tables 5-6 and Figures 4-7 illustrate trends in enrollment by gender. For the eighth year in a row, there are more female than male undergraduates. The campus enrolls more women than men at the undergraduate and graduate levels, and at the professional level the proportion is moving toward more equal representation.*
- *Tables 7-8 and Figures 8-9 illustrate that as a percent of all undergraduates Hispanic enrollment increased substantially in the early nineties then leveled off at around 17 percent. Enrollment of Asian/Pacific Islander students climbed steadily to a current percentage of 23. In contrast, the representation of Black students is at the lowest point in the period at 9.6 percent. At the graduate level, the proportion of Black, Hispanic, and Asian students rose steadily until the mid-nineties; then the proportion of only Hispanic students continued to increase.*
- *The maps in Figure 10 illustrate geographic residency. Ninety-six percent of undergraduates are Illinois residents, while the graduate and professional cohorts are less concentrated in the State (70%). The geographic origin of international students is displayed in Table 9, with most international students coming primarily from the people's Republic of China and India.*

## Table 1

### UIC FALL ENROLLMENT BY LEVEL FALL 1990 - FALL 2000

LEVEL	1990	1991	1992	1993	1994	1995	1996	1997	1998	1999	2000
Freshman	4,704	4,384	4,527	4,550	4,269	4,357	4,352	4,477	4,565	4,499	4,401
Sophomore	3,204	3,214	3,117	3,022	3,014	3,065	3,052	3,176	3,147	2,970	3,111
Junior	3,616	3,568	3,543	3,377	3,457	3,375	3,420	3,312	3,434	3,474	3,356
Senior	4,643	4,477	4,939	5,302	5,354	5,272	5,290	5,227	5,140	5,161	5,205
Other	298	194	160	183	112	73	76	91	88	56	58
Subtotal	16,465	15,837	16,286	16,434	16,206	16,142	16,190	16,283	16,374	16,160	16,131
Grad I	3,443	3,855	3,971	3,944	3,846	3,658	3,614	3,665	3,586	3,139	3,320
Grad II	1,735	1,587	1,749	1,855	1,883	1,835	1,841	1,735	1,798	2,321	2,312
Nondegree	663	672	737	670	615	619	615	613	595	604	567
Subtotal	5,841	6,114	6,457	6,469	6,344	6,112	6,070	6,013	5,979	6,064	6,199
Professional	2,205	2,257	2,273	2,267	2,315	2,335	2,323	2,282	2,299	2,205	2,211
Campus Total	24,511	24,208	25,016	25,170	24,865	24,589	24,583	24,578	24,652	24,429	24,541
Resident *	809	862	875	945	902	970	970	970	1,193	1,196	981
Grand Total	25,320	25,070	25,891	26,115	25,767	25,559	25,553	25,548	25,845	25,625	25,522



\* The number of residents is estimated for years 1995-2000.

#### DATA SOURCES:

1990-1992, 1997-1998 Data Resources and Institutional Analysis: UIC

1992-1996, Research Data Base: UOAPA, Data Resources and Institutional Analysis: UIC

1999-2000, ISIS Database

Table 2

**UIC FALL UNDERGRADUATE ENROLLMENT BY ADMISSION CATEGORY  
FALL 1990 - FALL 2000**

LEVEL	1990	1991	1992	1993	1994	1995	1996	1997	1998	1999	2000
Beginning Freshmen	2,542	2,513	2,697	2,710	2,571	2,529	2,807	2,890	2,947	2,616	2,843
New Transfers	2,572	2,328	2,265	2,159	2,080	1,957	1,813	1,751	1,806	1,881	1,705
Readmits <sup>1</sup>	937	653	584	472	389	387	413	334	302	279	238
Continuing Students	10,414	10,343	10,740	11,093	11,166	11,269	11,157	11,308	11,319	11,384	11,345
<b>Total</b>	<b>16,465</b>	<b>15,837</b>	<b>16,286</b>	<b>16,434</b>	<b>16,206</b>	<b>16,142</b>	<b>16,190</b>	<b>16,283</b>	<b>16,374</b>	<b>16,160</b>	<b>16,131</b>

Table 2.1

**A COMPARISON OF FALL 1990 AND FALL 2000 UNDERGRADUATE ENROLLMENT  
AS A PERCENTAGE OF TOTAL ENROLLMENT**

LEVEL	1990	2000	Change in % of Total
Beginning Freshmen	15.4%	17.6%	2.2
New Transfers	15.6%	10.6%	(5.1)
Readmits	5.7%	1.5%	(4.2)
Continuing Students	63.2%	70.3%	7.1
<b>TOTAL</b>	<b>100.0%</b>	<b>100.0%</b>	

**UIC New Student Enrollment  
Fall 1990 - Fall 2000**

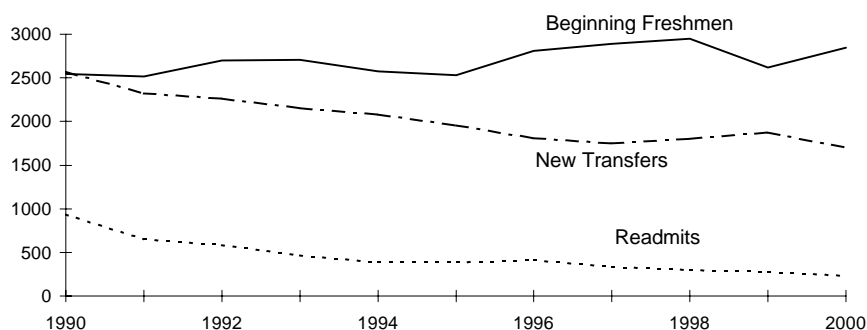


Figure 2

<sup>1</sup> The number of readmits decreased in later years due to changes in processing and policy. In the past, students were required to apply for readmission if they were not enrolled during the previous term. Beginning Spring 1993, readmission is required only after "stopping out" two or more terms.

Note: Total may not equal 100.0% due to rounding.

**DATA SOURCES:**

1990-1992, 1997-1998 Data Resources and Institutional Analysis: UIC

1992-1996, Research Data Base: UOAPA, Data Resources and Institutional Analysis: UIC

1999-2000, ISIS Database

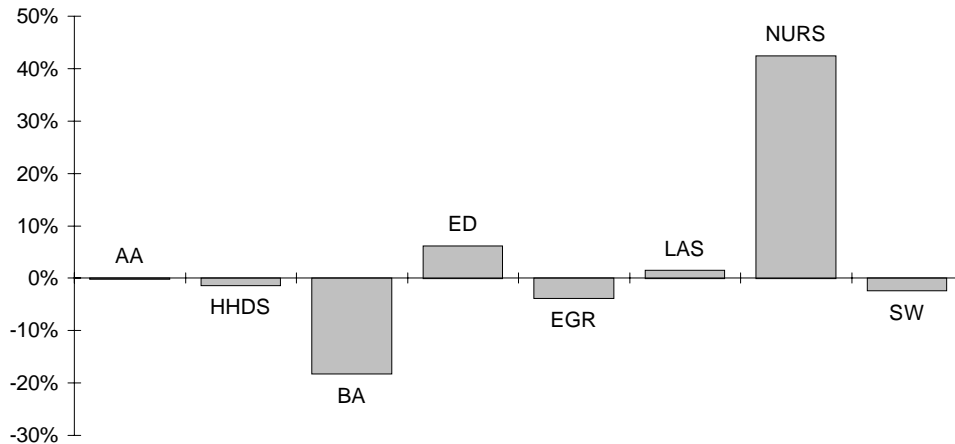
Table 3

**UIC UNDERGRADUATE ENROLLMENT BY COLLEGE  
FALL 1990 - FALL 2000**

COLLEGE	1990	1991	1992	1993	1994	1995	1996	1997	1998	1999	2000
Architecture & Arts <sup>1</sup>	1,185	1,132	1,090	1,118	1,101	1,161	1,206	1,124	1,133	1,167	1,184
Hlth & Human Dev. Sci. <sup>2</sup>	338	328	357	742	763	749	689	687	730	696	617
Business Admin.	2,964	2,813	2,655	2,398	2,346	2,304	2,250	2,430	2,603	2,604	2,427
Education	162	157	150	157	182	165	196	215	208	194	172
Engineering	2,010	2,036	2,031	1,979	1,885	1,892	1,967	2,018	1,983	1,892	1,934
Kinesiology <sup>2</sup>	287	267	294	--	--	--	--	--	--	--	--
Liberal Arts & Sci.	9,093	8,733	9,297	9,515	9,224	9,129	9,104	9,085	9,072	9,032	9,230
Nursing	337	294	333	434	615	641	679	639	571	503	480
Social Work	89	77	79	91	90	101	99	85	74	72	87
<b>Campus Total</b>	<b>16,465</b>	<b>15,837</b>	<b>16,286</b>	<b>16,434</b>	<b>16,206</b>	<b>16,142</b>	<b>16,190</b>	<b>16,283</b>	<b>16,374</b>	<b>16,160</b>	<b>16,131</b>

**Percent Change in UIC Undergraduate  
Enrollment by College  
Fall 1990 - Fall 2000**

AA = ARCH./ART  
 HHDS = HLTH & HUMAN DEV.SCI.<sup>2</sup>  
 BA = BUSINESS ADMIN.  
 ED = EDUCATION  
 ENGR = ENGINEERING  
 LAS = LIBERAL ARTS & SCI.  
 NURS = NURSING  
 SW = SOCIAL WORK



Colleges	AA <sup>1</sup>	HHDS <sup>2</sup>	BA	ED	ENGR	LAS	NURS	SW
% Change	0%	-1%	-18%	6%	-4%	2%	42%	-2%

<sup>1</sup> In 1995, Architecture, Art, and Urban Planning changed to Architecture and the Arts. Urban Planning is now a part of Urban Policy and Public Affairs in the Graduate College.

<sup>2</sup> As of 1993, Kinesiology is a part of the College of Health & Human Development Sciences. In Figure 3, 1990 data for Kinesiology was added to Health & Human Development Sciences to make an accurate comparison to 2000 data.

**DATA SOURCES:**

1990-1991, 1997-1998, Data Resources and Institutional Analysis: UIC

1992-1996, Research Data Base: UOAPA

1999-2000, ISIS Database

**Table 4**  
**UIC GRADUATE ENROLLMENT BY COLLEGE**  
**FALL 1992 - FALL 2000**

COLLEGE	LEVEL	1992	1993	1994	1995	1996	1997	1998	1999	2000
Architecture & the Arts <sup>1</sup>	GI	357	354	334	202	197	220	223	213	233
	GII	23	33	42	6	4	2	--	--	5
	Unassigned	16	8	11	4	2	5	1	1	3
Hlth & Human Dev.Sci.	GI	80	147	169	147	148	145	161	168	177
	GII	--	--	--	--	--	19	15	26	31
	Unassigned	3	17	7	4	16	12	22	19	18
Business Administration	GI	582	483	440	484	544	557	471	485	527
	GII	65	85	87	83	86	85	83	78	82
	Unassigned	15	16	35	46	41	24	20	28	11
Dentistry	GI	4	5	7	5	2	7	5	9	7
	GII	--	--	--	--	2	--	--	--	--
	Unassigned	--	--	--	--	--	--	--	--	--
Education	GI	471	483	469	418	427	425	433	408	453
	GII	165	204	229	208	230	221	218	210	182
	Unassigned	30	24	16	14	11	13	6	2	7
Engineering	GI	551	485	413	415	444	493	619	594	646
	GII	339	361	316	282	284	271	218	216	235
	Unassigned	14	7	8	21	23	24	19	18	15
Graduate	GI	--	--	--	--	--	--	--	--	--
	GII	2	2	--	2	--	--	--	--	--
	Unassigned	302	313	280	314	351	330	346	374	346
Kinesiology <sup>2</sup>	GI	76	--	--	--	--	--	--	--	--
	GII	0	--	--	--	--	--	--	--	--
	Unassigned	9	--	--	--	--	--	--	--	--
Liberal Arts & Sciences	GI	788	723	680	622	569	505	449	451	422
	GII	611	625	646	607	597	602	713	724	736
	Unassigned	75	45	34	34	20	28	27	23	23
Medicine	GI	67	66	71	66	58	73	54	47	56
	GII	127	129	124	143	135	131	165	159	160
	Unassigned	4	7	13	3	4	3	5	3	1
Nursing	GI	245	350	436	384	343	307	279	280	279
	GII	127	117	118	107	95	89	86	75	67
	Unassigned	156	115	99	97	72	80	59	42	36
Pharmacy	GI	32	40	30	46	61	55	31	32	37
	GII	63	64	64	66	63	68	85	94	108
	Unassigned	1	1	1	4	4	5	2	--	3
Public Health	GI	216	245	279	261	227	227	247	272	303
	GII	121	131	156	154	160	163	141	157	141
	Unassigned	93	101	98	43	47	47	55	51	66
Social Work	GI	502	563	518	505	489	503	457	513	478
	GII	106	104	101	91	90	35	35	34	39
	Unassigned	19	16	13	19	14	31	23	24	24
Urban Plan. & Public Affairs	GI	--	--	--	103	105	148	157	175	190
	GII	--	--	--	86	95	49	39	40	38
	Unassigned	--	--	--	16	10	11	10	19	14
Total	GI	3,971	3,944	3,846	3,658	3,614	3,665	3,586	3,647	3,808
	GII	1,749	1,855	1,883	1,835	1,841	1,735	1,798	1,813	1,824
	Unassigned	737	670	615	619	615	613	595	604	567
		6,457	6,469	6,344	6,112	6,070	6,013	5,979	6,064	6,199

<sup>1</sup> In 1995, Architecture, Arts, and Urban Planning changed to Architecture and the Arts. Urban Planning is now a part of Urban Planning and Public Affairs in the Graduate College.

<sup>2</sup> As of 1993, Kinesiology is a part of the college of Health & Human Development Sciences.

DATA SOURCES: 1992-2000 Student Data Books: UIC

Table 5

**UIC FALL ENROLLMENT BY LEVEL AND GENDER  
FALL 1990 - FALL 2000**

LEVEL	1990	1991	1992	1993	1994	1995	1996	1997	1998	1999	2000
Undergraduate											
Male	8,430	8,040	8,172	8,035	7,784	7,626	7,513	7,517	7,446	7,358	7,262
Female	8,035	7,797	8,114	8,399	8,422	8,516	8,677	8,766	8,928	8,802	8,869
Subtotal	16,465	15,837	16,286	16,434	16,206	16,142	16,190	16,283	16,374	16,160	16,131
Graduate											
Male	2,794	2,812	2,919	2,794	2,690	2,579	2,611	2,596	2,571	2,538	2,551
Female	3,047	3,302	3,538	3,675	3,654	3,533	3,459	3,417	3,408	3,526	3,648
Subtotal	5,841	6,114	6,457	6,469	6,344	6,112	6,070	6,013	5,979	6,064	6,199
Professional.											
Male	1,267	1,287	1,302	1,272	1,286	1,308	1,270	1,216	1,229	1,149	1,114
Female	938	970	971	995	1,029	1,027	1,053	1,066	1,070	1,056	1,097
Subtotal	2,205	2,257	2,273	2,267	2,315	2,335	2,323	2,282	2,299	2,205	2,211
Campus Total											
Male	12,491	12,139	12,393	12,101	11,760	11,513	11,394	11,329	11,246	11,045	10,927
Female	12,020	12,069	12,623	13,069	13,105	13,076	13,189	13,249	13,406	13,384	13,614
Total	24,511	24,208	25,016	25,170	24,865	24,589	24,583	24,578	24,652	24,429	24,541

**UIC Enrollment Distribution by Gender  
Fall 1990 - Fall 2000**

■ Male ■ Female

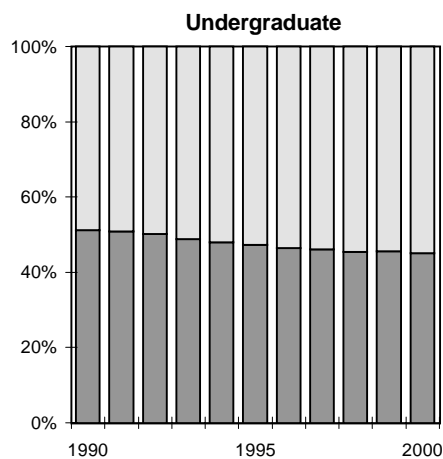


Figure 4

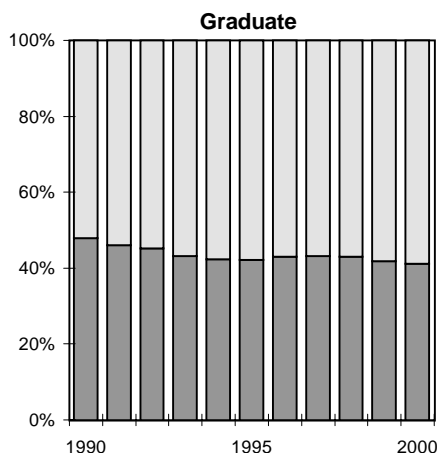


Figure 5

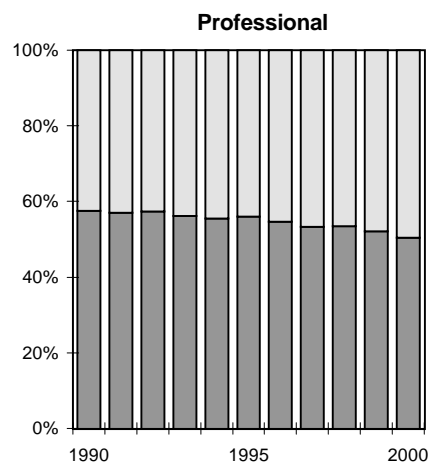


Figure 6

DATA SOURCES: 1997-1998, Student Data Books: UIC  
 1990-1991, 1995-1996, Data Resources and Institutional Analysis: UIC  
 1992-1994, Research Data Base: UOAPA  
 1999-2000, ISIS Database

Table 6

**UIC UNDERGRADUATE ENROLLMENT BY COLLEGE AND GENDER  
FALL 1990 - FALL 2000**

COLLEGE		1990	1991	1992	1993	1994	1995	1996	1997	1998	1999	2000
Architecture & the Arts <sup>1</sup>	Male	726	702	688	705	700	724	723	612	607	594	587
	Female	459	430	402	413	401	437	481	512	526	573	597
	Subtotal	1,185	1,132	1,090	1,118	1,101	1,161	1,204	1,124	1,133	1,167	1,184
Hlth & Human Dev. Sci. <sup>2</sup>	Male	51	58	73	290	303	286	263	285	289	283	250
	Female	287	270	284	452	460	463	428	402	441	413	367
	Subtotal	338	328	357	742	763	749	691	687	730	696	617
Business Administration	Male	1,606	1,466	1,397	1,261	1,246	1,207	1,156	1,252	1,275	1,236	1,150
	Female	1,358	1,347	1,258	1,137	1,100	1,097	1,096	1,178	1,328	1,368	1,277
	Subtotal	2,964	2,813	2,655	2,398	2,346	2,304	2,252	2,430	2,603	2,604	2,427
Education	Male	16	16	14	13	18	21	26	30	24	20	18
	Female	146	141	136	144	164	144	170	185	184	174	154
	Subtotal	162	157	150	157	182	165	196	215	208	194	172
Engineering	Male	1,673	1,686	1,648	1,619	1,519	1,521	1,595	1,638	1,597	1,520	1,521
	Female	337	350	383	360	366	371	371	380	386	372	413
	Subtotal	2,010	2,036	2,031	1,979	1,885	1,892	1,966	2,018	1,983	1,892	1,934
Kinesiology <sup>2</sup>	Male	167	175	177	--	--	--	--	--	--	--	--
	Female	120	92	117	--	--	--	--	--	--	--	--
	Subtotal	287	267	294	--	--	--	--	--	--	--	--
Liberal Arts & Sciences	Male	4,149	3,896	4,126	4,081	3,912	3,774	3,669	3,631	3,602	3,658	3,686
	Female	4,944	4,837	5,171	5,434	5,312	5,355	5,432	5,454	5,470	5,374	5,544
	Subtotal	9,093	8,733	9,297	9,515	9,224	9,129	9,101	9,085	9,072	9,032	9,230
Nursing	Male	25	31	38	58	77	79	71	59	43	36	39
	Female	312	263	295	376	538	562	610	580	528	467	441
	Subtotal	337	294	333	434	615	641	681	639	571	503	480
Social Work	Male	17	10	11	8	9	10	10	10	9	10	11
	Female	72	67	68	83	81	91	89	75	65	62	76
	Subtotal	89	77	79	91	90	101	99	85	74	72	87
CAMPUS	Male	8,430	8,040	8,172	8,035	7,784	7,622	7,513	7,517	7,446	7,357	7,262
	Female	8,035	7,797	8,114	8,399	8,422	8,520	8,677	8,766	8,928	8,803	8,869
	TOTAL	16,465	15,837	16,286	16,434	16,206	16,142	16,190	16,283	16,374	16,160	16,131

<sup>1</sup> In 1995, Architecture, Art, and Urban Planning changed to Architecture and the Arts. Urban Planning is now part of Urban Planning and Public Affairs in the Graduate College.

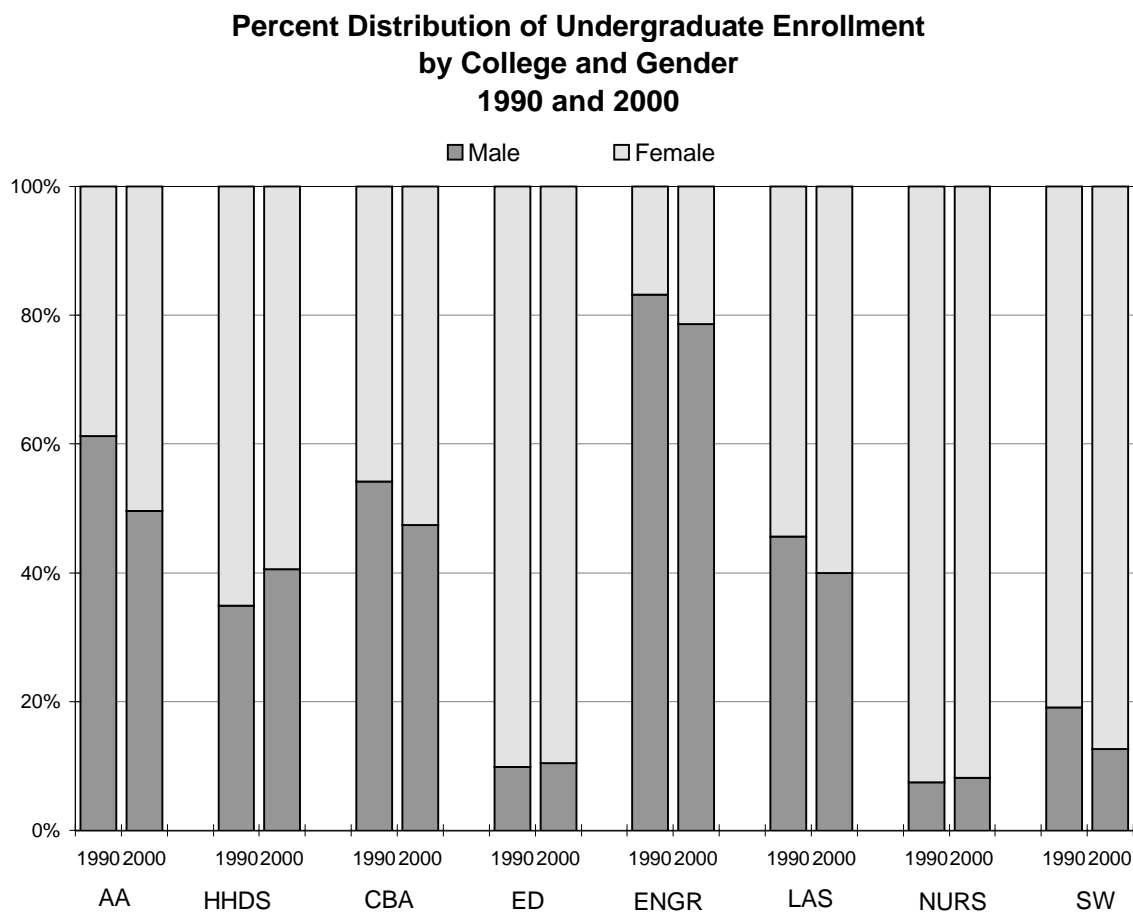
<sup>2</sup> As of Fall 1993, Kinesiology is a part of the College of Health & Human Development Sciences.

DATA SOURCES: 1989-1990, 1998, Student Data Books: UIC

1990-1991, Data Resources and Institutional Analysis: UIC

1992-1997, Research Data Base: UOAPA

1999-2000, ISIS Database



**Figure 7**

AA = ARCHITECTURE & ART<sup>1</sup>

HHDS = HEALTH & HUMAN DEVELOPMENT SCIENCES<sup>2</sup>

CBA = COMMERCE & BUSINESS ADMINISTRATION

ED = EDUCATION

ENGR = ENGINEERING

LAS = LIBERAL ARTS & SCIENCES

NUR = NURSING

SW = SOCIAL WORK

<sup>1</sup> In 1995, Architecture, Art, and Urban Planning changed to Architecture and the Arts. Urban Planning is now a part of Urban Planning and Public Affairs in the Graduate College.

<sup>2</sup> Kinesiology is now a part of Health & Human Development Sciences. 1990 data for Kinesiology were added to Health & Human Development Sciences to make an accurate comparison to 2000 data.

Table 7

**UIC FALL ENROLLMENT BY LEVEL AND RACE/ETHNICITY  
FALL 1990 - FALL 2000**

RACE/ETHNICITY	1990	1991	1992	1993	1994	1995	1996	1997	1998	1999	2000
<b>Undergraduate</b>											
Am.Ind./Alaskan Nat.	48	47	51	53	54	52	48	50	41	40	42
Asian/Pac. Islander	2,688	2,695	2,842	2,998	3,054	3,026	3,172	3,421	3,637	3,634	3,707
Black	1,827	1,703	1,746	1,723	1,721	1,698	1,680	1,686	1,694	1,587	1,552
Hispanic	1,904	2,066	2,338	2,553	2,674	2,755	2,725	2,765	2,776	2,782	2,765
White	9,073	8,481	8,436	8,254	7,856	7,771	7,722	7,537	7,398	7,257	7,179
International	384	369	360	369	357	324	302	268	254	260	289
Not Reported	541	476	513	484	490	516	541	556	574	600	597
Subtotal	16,465	15,837	16,286	16,434	16,206	16,142	16,190	16,283	16,374	16,160	16,131
<b>Graduate</b>											
Am.Ind./Alaskan Nat.	16	19	20	20	21	21	16	16	17	19	12
Asian/Pac. Islander	294	330	372	400	441	448	431	466	449	423	405
Black	365	403	461	523	542	546	551	541	496	510	526
Hispanic	201	233	245	281	309	354	347	344	335	360	411
White	3,523	3,737	3,924	3,883	3,790	3,475	3,357	3,190	3,111	3,137	3,061
International	1,104	1,234	1,217	1,135	1,019	1,049	1,128	1,217	1,329	1,406	1,559
Not Reported	338	158	218	227	222	219	240	239	242	209	225
Subtotal	5,841	6,114	6,457	6,469	6,344	6,112	6,070	6,013	5,979	6,064	6,199
<b>Professional</b>											
Am.Ind./Alaskan Nat.	3	3	5	6	7	10	10	6	10	10	9
Asian/Pac. Islander	399	441	444	475	545	602	661	678	702	706	688
Black	182	177	191	207	223	215	191	192	192	175	172
Hispanic	172	157	163	156	172	163	180	187	190	191	179
White	1,403	1,432	1,427	1,367	1,308	1,269	1,196	1,135	1,129	1,046	1,092
International	16	19	21	31	27	35	39	46	41	33	31
Not Reported	30	28	22	25	33	41	46	38	35	44	40
Subtotal	2,205	2,257	2,273	2,267	2,315	2,335	2,323	2,282	2,299	2,205	2,211
<b>Campus Totals</b>											
Am.Ind./Alaskan Nat.	67	69	76	79	82	83	74	72	68	69	63
Asian/Pac. Islander	3,381	3,466	3,658	3,873	4,040	4,076	4,264	4,565	4,788	4,763	4,800
Black	2,374	2,283	2,398	2,453	2,486	2,459	2,422	2,419	2,382	2,272	2,250
Hispanic	2,277	2,456	2,746	2,990	3,155	3,272	3,252	3,296	3,301	3,333	3,355
White	13,999	13,650	13,787	13,504	12,954	12,515	12,275	11,862	11,638	11,440	11,332
International	1,504	1,622	1,598	1,535	1,403	1,408	1,469	1,531	1,624	1,699	1,879
Not Reported	909	662	753	736	745	776	827	833	851	853	862
Total	24,511	24,208	25,016	25,170	24,865	24,589	24,583	24,578	24,652	24,429	24,541

DATA RESOURCES: 1997-1998, Student Data Books: UIC

1990-1991, 1996, Data Resources and Institutional Analysis: UIC

1992-1993, Research Data Base: UOAPA

1994-1995, Enrollment Tables, Tables 3, 4, 5: Data Resources and Institutional Analysis: UIC

1999-2000, ISIS Database

Table 8

**UIC FALL ENROLLMENT PERCENT DISTRIBUTION  
BY RACE/ETHNICITY  
FALL 1990 - FALL 2000**

RACE/ETHNICITY	1990	1991	1992	1993	1994	1995	1996	1997	1998	1999	2000
<b>Undergraduate</b>											
Am.Ind./Alaskan Nat.	0.3	0.3	0.3	0.3	0.3	0.3	0.3	0.3	0.3	0.2	0.3
Asian/Pac.Islander	16.3	17.0	17.5	18.2	18.8	18.7	19.6	21.0	22.2	22.5	23.0
Black	11.1	10.8	10.7	10.5	10.6	10.5	10.4	10.4	10.3	9.8	9.6
Hispanic	11.6	13.0	14.4	15.5	16.5	17.1	16.8	17.0	17.0	17.2	17.1
White	55.1	53.6	51.8	50.2	48.5	48.1	47.7	46.3	45.2	44.9	44.5
International	2.3	2.3	2.2	2.2	2.2	2.0	1.9	1.6	1.6	1.6	1.8
Not Reported	3.3	3.0	3.1	2.9	3.0	3.2	3.3	3.4	3.5	3.7	3.7
Subtotal	100.0%	100.0%	100.0%	100.0%	100.0%	100.0%	100.0%	100.0%	100.0%	100.0%	100.0%
<b>Graduate</b>											
Am.Ind./Alaskan Nat.	0.3	0.3	0.3	0.3	0.3	0.3	0.3	0.3	0.3	0.3	0.2
Asian/Pac.Islander	5.0	5.4	5.8	6.2	7.0	7.3	7.1	7.7	7.5	7.0	6.5
Black	6.2	6.6	7.1	8.1	8.5	8.9	9.1	9.0	8.3	8.4	8.5
Hispanic	3.4	3.8	3.8	4.3	4.9	5.8	5.7	5.7	5.6	5.9	6.6
White	60.3	61.1	60.8	60.0	59.7	56.9	55.3	53.1	52.0	51.7	49.4
International	18.9	20.2	18.8	17.5	16.1	17.2	18.6	20.2	22.2	23.2	25.1
Not Reported	5.8	1.8	3.4	3.5	3.5	3.6	4.0	4.0	4.0	3.4	3.6
Subtotal	100.0%	100.0%	100.0%	100.0%	100.0%	100.0%	100.0%	100.0%	100.0%	100.0%	100.0%
<b>Professional</b>											
Am.Ind./Alaskan Nat.	0.1	0.1	0.2	0.3	0.3	0.4	0.4	0.3	0.4	0.5	0.4
Asian/Pac.Islander	18.1	19.5	19.5	21.0	23.5	25.8	28.5	29.7	30.5	32.0	31.1
Black	8.3	7.8	8.4	9.1	9.6	9.2	8.2	8.4	8.4	7.9	7.8
Hispanic	7.8	7.0	7.2	6.9	7.4	7.0	7.7	8.2	8.3	8.7	8.1
White	63.6	63.4	62.8	60.3	56.5	54.3	51.5	49.7	49.1	47.4	49.4
International	0.7	0.8	0.9	1.4	1.2	1.5	1.7	2.0	1.8	1.5	1.4
Not Reported	1.4	1.2	1.0	1.1	1.4	1.8	2.0	1.7	1.5	2.0	1.8
Subtotal	100.0%	100.0%	100.0%	100.0%	100.0%	100.0%	100.0%	100.0%	100.0%	100.0%	100.0%
<b>Campus Total</b>											
Am.Ind./Alaskan Nat.	0.3	0.3	0.3	0.3	0.3	0.3	0.3	0.3	0.3	0.3	0.3
Asian/Pac.Islander	13.8	14.3	14.6	15.4	16.2	16.6	17.3	18.6	19.4	19.5	19.6
Black	9.7	9.4	9.6	9.7	10.0	10.0	9.9	9.8	9.7	9.3	9.2
Hispanic	9.3	10.1	11.0	11.9	12.7	13.3	13.2	13.4	13.4	13.6	13.7
White	57.1	56.4	55.1	53.7	52.1	50.9	49.9	48.3	47.2	46.8	46.2
International	6.1	6.7	6.4	6.1	5.6	5.7	6.0	6.2	6.6	7.0	7.7
Not Reported	3.7	2.7	3.0	2.9	3.0	3.2	3.4	3.4	3.5	3.5	3.5
Total	100.0%	100.0%	100.0%	100.0%	100.0%	100.0%	100.0%	100.0%	100.0%	100.0%	100.0%

Note: Totals may not equal 100.0% due to rounding.

DATA SOURCES: 1997-1998, Student Data Book: UIC

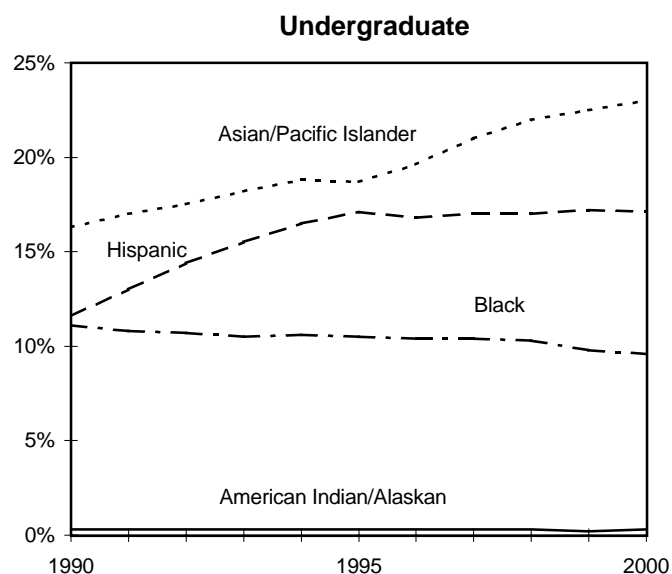
1990-1991, Office of Planning and Resources Management: UIC

1992-1993, Research Data Base: UOAPA

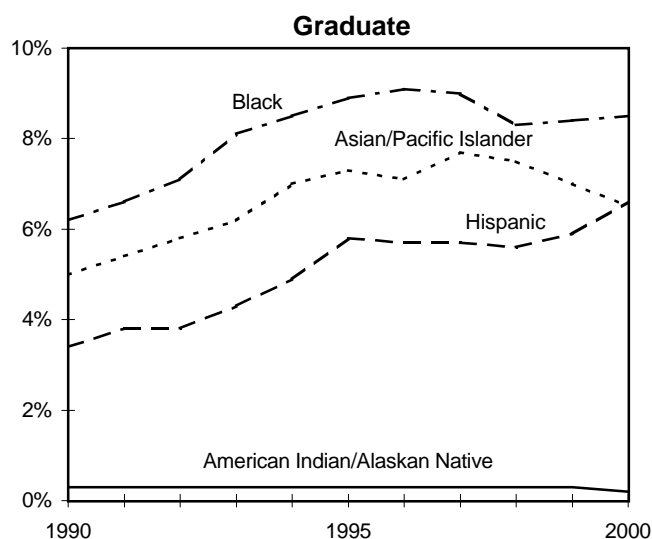
1994-1996, Enrollment Tables, Tables 3, 4, 5: Data Resources and Institutional Analysis: UIC

1999-2000, ISIS Database

### UIC Minority Enrollment As a Percentage of Total Enrollment Fall 1999 - Fall 2000



**Figure 8**



**Figure 9**

**Note:** In 1985, the President's Award Program (PAP) was established to ensure that capable underrepresented Black and Hispanic undergraduates, with outstanding academic records, could study at the University of Illinois. In fall 1991, the program was expanded to include American Indian/Alaskan Native students.

GEOGRAPHICAL DISTRIBUTION OF UIC STUDENT RESIDENCY

FALL 2000

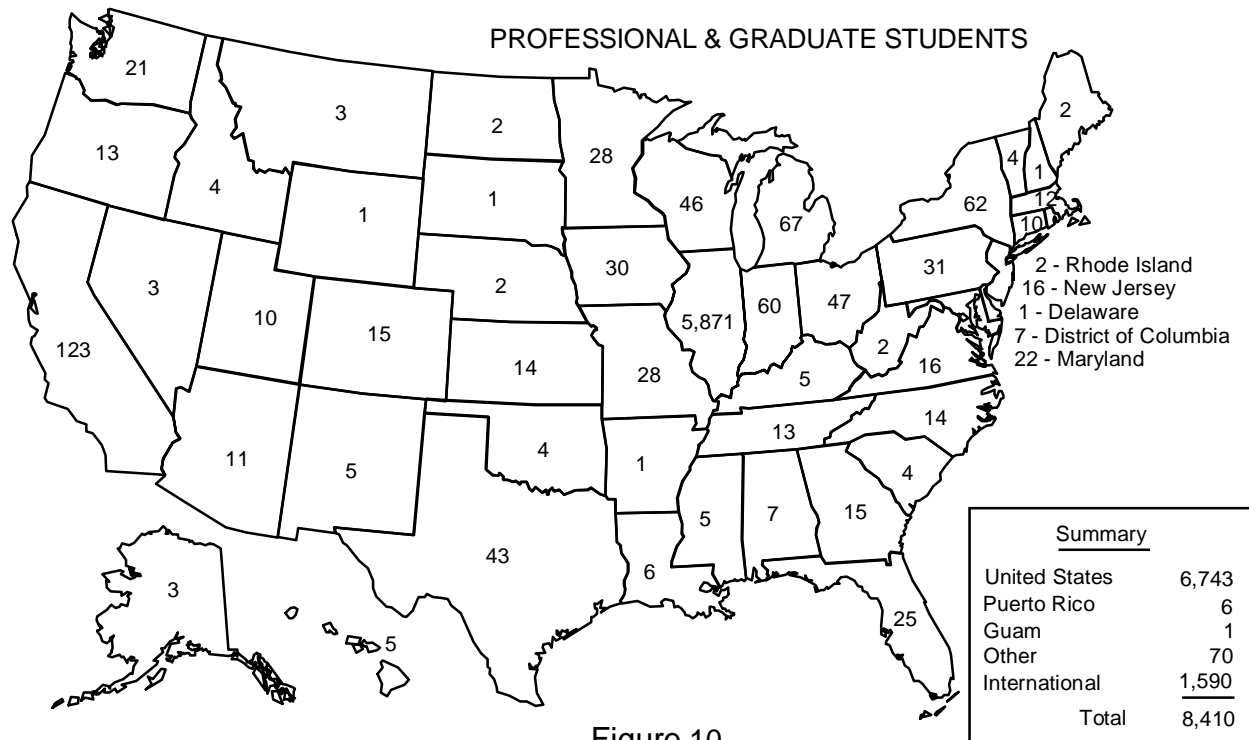
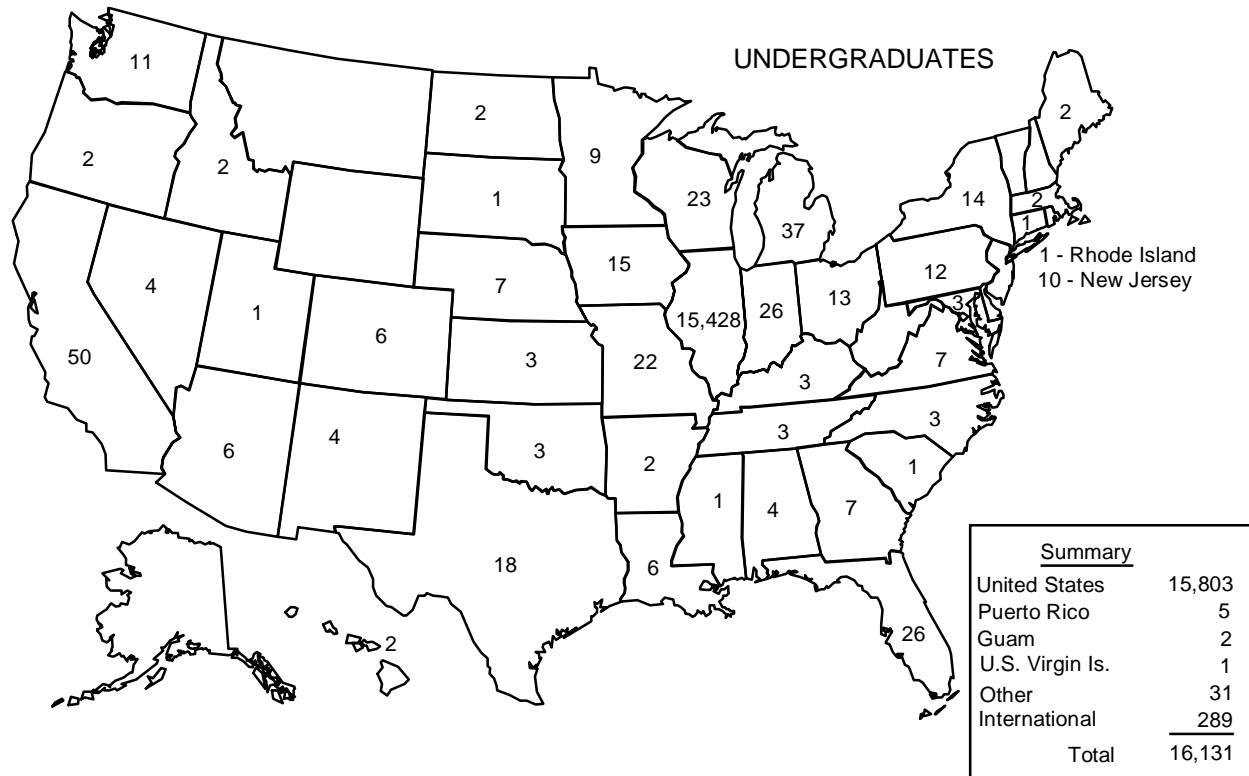


Figure 10

"Other" includes U.S. residents using foreign addresses. U.S. total includes unknown and not reported.

DATA SOURCE: 2000, ISIS Database

**Table 9**  
**GEOGRAPHICAL ORIGIN**  
**OF 1,879 INTERNATIONAL STUDENTS**  
**REPRESENTING 98 COUNTRIES**  
**FALL 2000**

Continent	Country	UG	G/PR	Total	Continent	Country	UG	G/PR	Total
North/Central America & W. Indies	Bahamas	--	1	1	Africa	Sweden	1	3	4
	Belize	--	1	1		Switzerland	--	1	1
	Canada	7	29	36		Ukraine	1	4	5
	Cayman Islands	1	--	1		United Kingdom	1	6	7
	Costa Rica	--	1	1		Former USSR	--	24	24
	Guatemala	--	2	2		Yugoslavia	3	35	38
	Haiti	--	1	1		Algeria	--	1	1
	Jamaica	--	1	1		Cameroon	1	--	1
	Mexico	4	9	13		Cote D'Ivoire	--	1	1
	Netherlands Antilles	--	1	1		Egypt	--	9	9
South America	Nicaragua	1	--	1	Far East Asia	Ghana	4	--	4
	Trinidad & Tobago	--	1	1		Kenya	1	6	7
	Argentina	--	10	10		Madagascar	1	--	1
	Bolivia	--	1	1		Morocco	1	--	1
	Brazil	2	11	13		Niger	--	1	1
	Chile	--	4	4		Nigeria	3	5	8
	Colombia	--	10	10		South Africa	--	2	2
	Croatia	--	2	2		Sudan	--	1	1
	Ecuador	--	1	1		Zambia	1	1	2
	Paraguay	--	1	1	Near/Middle East Asia	Bangladesh	3	3	6
Europe	Peru	3	3	6		Cambodia	--	1	1
	Venezuela	--	3	3		China, People's Rep.	10	396	406
	Albania	1	--	1		Hong Kong	7	6	13
	Andorra	1	--	1		India	23	456	479
	Armenia	--	3	3		Indonesia	4	7	11
	Austria	--	3	3		Japan	19	18	37
	Belarus	1	--	1		Korea/North	1	--	1
	Bulgaria	3	1	4		Korea/South	28	82	110
	Cyprus	2	1	3		Malaysia	12	4	16
	Czechoslovakia	1	1	2		Nepal	2	1	3
	Czech Republic	--	1	1	Oceania	Pakistan	11	6	17
	Denmark	--	2	2		Philippines	1	6	7
	Estonia	1	--	1		Singapore	1	5	6
	France	1	8	9		Sri Lanka	--	7	7
	Germany	3	20	23		Taiwan	7	38	45
	Greece	7	7	14		Thailand	6	35	41
	Hungary	1	1	2		Vietnam	1	--	1
	Ireland	--	1	1		Iran	2	3	5
	Italy	--	61	61		Israel	8	3	11
	Latvia	1	--	1		Jordan	--	7	7
	Lithuania	--	4	4		Kuwait	--	1	1
	Netherlands	--	1	1		Lebanon	1	1	2
	Norway	1	--	1		Qatar	--	1	1
	Poland	3	4	7		Saudi Arabia	1	8	9
	Portugal	1	--	1		Syria	--	1	1
	Romania	1	21	22		Turkey	3	35	38
	Russian Fed.	1	20	21		United Arab Emirates	1	1	2
	Serbia	--	4	4		Australia	2	1	3
	Slovakia	--	1	1					
	Spain	--	7	7					

Not Reported<sup>1</sup> 69 92 161

<sup>1</sup> Includes foreign students using U.S. addresses.

DATA SOURCE: 2000, ISIS Database

TOTAL 289 1,590 1,879

---

# New Student Characteristics

## UIC

---

### **HIGHLIGHTS**

- *Enrollment of new freshmen in Liberal Arts and Sciences, the largest college, is up over 16 percent more compared to ten years ago and 11 percent compared to last year. Business Administration is lower by a third against the number in fall 1990.*
- *In the last ten years, new transfer enrollment decreased from a high of over 2,570 in 1990, to a new low for the period of 1,705, a decrease of one-third. However, as in the past, well over half of all transfers enroll in the College of Liberal Arts and Sciences. See Table 11.*
- *The mean high school percentile rank of beginning freshmen increased for seven years then finally edged downward slightly this fall (Table 12 and Figure 11) and the average American College Test (ACT) composite score increased for five years before decreasing slightly in fall 2000. It still is two points higher in 2000 than in 1991 and exceeds the mean of Illinois test-takers by almost one and one-half points. Because of a change from the ACT to the Enhanced ACT, a comparison of the scores cannot be made across the ten-year period. See Table 13.*
- *The Chicago area continues to be the main source of new students--supplying over 90 percent of the UIC new freshman and about half of all transfer enrollment. Likewise, Illinois residents comprise approximately two-thirds of new graduate and professional students. Tables 14-16 present selected demographics of the fall 2000 beginning students, and geographic characteristics such as origin, residency, and transfer institution are mapped in Figures 12-14.*



**Table 10**

**UIC BEGINNING FRESHMEN BY COLLEGE OF ENTRY  
FALL 1990 - FALL 2000**

COLLEGE	1990	1991	1992	1993	1994	1995	1996	1997	1998	1999	2000
Architecture & Arts <sup>1</sup>	145	106	124	110	110	115	155	138	192	143	143
Business Admin.	340	291	218	224	213	259	264	305	278	278	226
Engineering	300	275	312	293	255	285	324	353	325	301	352
Hlth & Human Dev. Sci. <sup>2</sup>	41	44	44	48	46	58	44	67	52	48	66
Lib. Arts & Sciences	1,716	1,797	1,999	2,035	1,905	1,755	1,917	1,955	2,000	1,797	2,002
Nursing <sup>3</sup>	--	--	--	--	42	57	103	72	100	49	54
<b>Total</b>	<b>2,542</b>	<b>2,513</b>	<b>2,697</b>	<b>2,710</b>	<b>2,571</b>	<b>2,529</b>	<b>2,807</b>	<b>2,890</b>	<b>2,947</b>	<b>2,616</b>	<b>2,843</b>

**Table 10.1**

**CHANGE IN UIC BEGINNING FRESHMAN ENROLLMENT BY COLLEGE OF ENTRY  
BETWEEN FALL 1990 AND FALL 2000**

COLLEGE	1990	2000	% Change
Architecture & Arts <sup>1</sup>	145	143	(1.4)
Business Admin.	340	226	(33.5)
Engineering	300	352	17.3
Hlth & Human Dev. Sci. <sup>2</sup>	41	66	61.0
Lib. Arts & Sciences	1,716	2,002	16.7
Nursing	--	54	--
	<b>2,542</b>	<b>2,843</b>	<b>11.8</b>

<sup>1</sup> In 1995, Architecture, Art, and Urban Planning changed to Architecture and the Arts. Urban Planning is now a part of Urban Policy and Public Affairs in the Graduate College.

<sup>2</sup> As of Fall 1993, Kinesiology is part of the College of Health & Human Development Sciences.

<sup>3</sup> As of Fall 1994, Nursing accepts freshmen.

DATA SOURCES: 1989-1991, Data Resources & Institutional Analysis: UIC  
1992-1998, Research Data Base: UOAPA;  
1999-2000, ISIS Database

**Table 11**  
**UIC NEW TRANSFERS BY COLLEGE OF ENTRY**  
**FALL 1990 - FALL 2000**

COLLEGE	1990	1991	1992	1993	1994	1995	1996	1997	1998	1999	2000
Architecture & Arts <sup>1</sup>	161	171	137	144	131	127	96	102	113	129	131
Hlth & Human Dev. Sci. <sup>2</sup>	117	118	141	189	184	145	119	113	121	146	62
Business Admin.	426	357	338	250	251	218	240	270	271	277	245
Education	1	7	8	17	11	11	13	9	4	0	3
Engineering	215	247	216	216	189	182	230	156	192	114	153
Kinesiology <sup>2</sup>	48	55	43	--	--	--	--	--	--	--	--
Lib. Arts & Sciences	1,504	1,272	1,308	1,247	1,191	1,147	1,017	1,029	1,033	1,139	1,037
Nursing	80	83	67	78	110	103	83	55	60	63	58
Social Work	20	18	15	18	13	24	15	17	12	13	16
<b>Campus Total</b>	<b>2,572</b>	<b>2,328</b>	<b>2,273</b>	<b>2,159</b>	<b>2,080</b>	<b>1,957</b>	<b>1,813</b>	<b>1,751</b>	<b>1,806</b>	<b>1,881</b>	<b>1,705</b>

**Table 11.1**  
**CHANGE IN UIC NEW TRANSFER ENROLLMENT BY COLLEGE OF ENTRY**  
**BETWEEN FALL 1990 AND FALL 2000**

COLLEGE	1990	2000	% Change
Architecture & Arts <sup>1</sup>	161	131	(18.6)
Business Admin.	426	245	(42.5)
Education	1	3	200.0
Engineering	215	153	(28.8)
Lib. Arts & Sciences	1,504	1,037	(31.1)
Social Work	20	16	(20.0)
Hlth & Human Dev. Sci. <sup>2</sup>	245	120	(51.0)
<b>Campus Total</b>	<b>2,572</b>	<b>1,705</b>	<b>(33.7)</b>

<sup>1</sup> In 1995, Architecture, Art, and Urban Planning changed to Architecture and the Arts. Urban Planning is now a part of Urban Policy and Public Affairs in the Graduate College.

<sup>2</sup> As of 1993, Kinesiology is a part of the College of Health & Human Development Sciences. Prior to 1990, Health Center included Nursing and Health & Human Development Sciences. In Table 11.1, all Health & Human Development Sciences, Nursing, Kinesiology, and the Health Center are included under the heading Health & Human Development Sciences.

DATA SOURCES: 1990-1991, Data Resources & Institutional Analysis: UIC

1992-1998, Research Data Base: UOAPA;

1999-2000 ISIS Database

Table 12

**UIC BEGINNING FRESHMEN BY  
HIGH SCHOOL PERCENTILE RANK DISTRIBUTION AND MEANS  
FALL 1990 - FALL 2000**

QUARTILE <sup>1</sup>	1990	1991	1992	1993	1994	1995	1996	1997	1998	1999	2000
Upper Quartile	52.7	50.8	49.1	47.9	52.2	52.9	55.5	57.8	59.1	59.8	59.0
Second Quartile	34.4	34.6	35.9	36.7	35.9	35.6	35.6	34.1	32.5	33.9	33.2
Third Quartile	12.4	14.1	14.4	14.9	11.8	11.1	8.8	8.0	8.2	6.1	7.6
Fourth Quartile	0.4	0.5	0.6	0.6	0.2	0.5	0.2	0.2	0.2	0.1	0.2
Total	100.0%	100.0%	100.0%	100.0%	100.0%	100.0%	100.0%	100.0%	100.0%	100.0%	100.0%
Mean HSPR	73.8	72.8	72.2	72.3	73.0	74.4	74.8	75.8	76.1	76.7	76.0

**UIC Beginning Freshmen  
Percent Distribution by HSPR Quartiles  
Fall 1990 and Fall 2000**

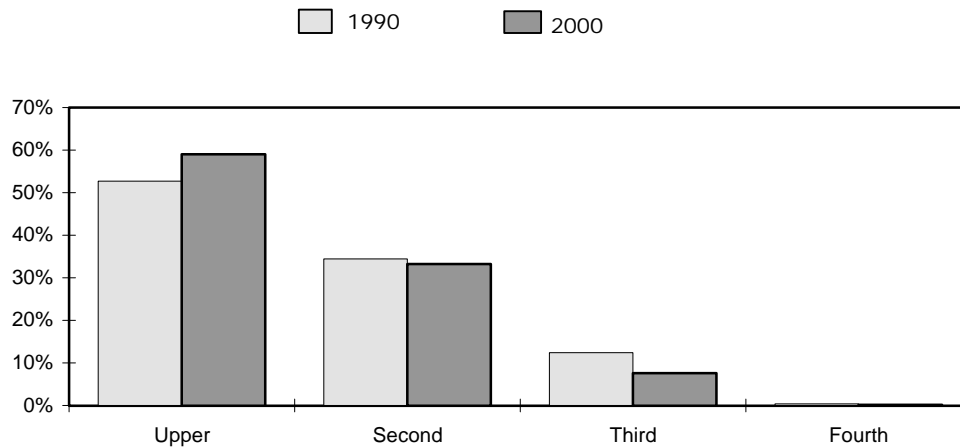


Figure 11

<sup>1</sup> Not Reported not included.

Note: Totals may not equal 100.0% due to rounding.

DATA SOURCES: 1992-2000: UOAPA Freshman Class Profile: UIC

1990, ISIS.3, DB2 Extract: UOAPA

1991, Data Resources & Institutional Analysis: UIC

Table 13

**UIC BEGINNING FRESHMEN BY  
ACT COMPOSITE SCORE DISTRIBUTION AND GROUP MEAN  
Fall 1990: ACT Assessment Test; Fall 1991 - Fall 2000: Enhanced ACT Assessment Test**

COMPOSITE SCORE	1990 <sup>1</sup>	EACT 1991	EACT 1992	EACT 1993	EACT 1994	EACT 1995	EACT 1996	EACT 1997	EACT 1998	EACT 1999	EACT 2000
Above 32	0.1	0.1	0.2	0.0	0.2	0.1	0.4	0.3	1.2	1.1	1.9
30 - 32	2.0	1.9	1.5	1.9	2.1	2.0	3.5	3.3	4.5	4.2	4.1
27 - 29	7.0	6.4	7.0	5.9	5.8	8.4	8.9	11.4	10.1	12.6	11.7
24 - 26	15.6	15.0	16.5	14.7	15.5	17.1	20.4	20.6	23.6	23.1	23.3
21 - 23	23.5	28.3	28.1	28.2	26.0	29.0	30.5	31.2	28.8	31.4	30.6
18 - 20	22.3	29.1	28.8	32.1	29.7	28.1	25.1	23.3	22.5	20.1	20.6
15 - 17	17.3	18.1	16.9	16.0	17.0	13.5	10.5	9.5	8.8	7.5	7.7
Below 15	12.3	1.3	1.0	1.2	3.7	1.8	0.7	0.4	0.6	0.0	0.0
TOTAL	100.0%	100.0%	100.0%	100.0%	100.0%	100.0%	100.0%	100.0%	100.0%	100.0%	100.0%
Mean ACT:C	20.2 <sup>1</sup>	20.9	21.1	20.9	20.9	21.4	22.1	22.5	22.7	23.0	22.9
Illinois Mean ACT:C	18.6 <sup>1</sup>	20.8	20.9	21.0	21.1	21.1	21.2	21.2	21.4	21.4	21.5

In October 1989, the American College Testing Program (ACT) introduced the Enhanced ACT Assessment. This test, usually taken by high school juniors and seniors, was similar but not identical to the previous assessment instrument. Because changes in the new test yielded differences in the scoring distribution, scores on the two tests are NOT interchangeable. ACT has published concordance tables which show scores on the former test to be equivalent to a higher score on the Enhanced Test. To convert the former score to an equivalent Enhanced Test score, the rule of thumb at the upper end is to add one (1) to the former test score and on the lower end to add anywhere from three to five points to the former score. Recent average scores for Illinois test takers are reported above in order to better compare the composite means.

<sup>1</sup> Both the U of I and Illinois 1990 test data include scores which were converted from Enhanced to original ACT scores.

Note: Totals may not equal 100.0% due to rounding.

DATA SOURCES: 1992-2000: UOAPA Freshman Class Profile: UIC

1990, ISIS.3, DB2 Extract: UOAPA

1991, Data Resources & Institutional Analysis: UIC

Table 14

## SELECTED CHARACTERISTICS OF UIC FALL 1995 AND FALL 2000 BEGINNING FRESHMEN

		Fall 1995	Fall 2000
Fall Enrollment		2,529	2,843
Gender	Male	47.2%	43.7%
	Female	52.8%	56.3%
Age as of 12/31	15 - 17	3.6%	1.9%
	18	71.5%	68.4%
	19 & over	24.9%	29.7%
Race/Ethnicity	Am.Ind./Alaskan Nat.	0.1%	0.2%
	Black	12.0%	10.1%
	Asian/Pac. Islander	22.3%	29.5%
	Hispanic	20.4%	17.1%
	White	41.4%	39.0%
	International	1.0%	0.8%
	Unknown	2.8%	3.2%
Major High School Feeders	Lane Tech	159	165
	Curie Metropolitan	*	63
	Niles Township	47	63
	Whitney Young Magnet	47	51
	Niles North	*	44
	Von Steuben Metro	49	43

\* The high school was not among the top feeder schools in 1995.

DATA SOURCE: 2000, ISIS Database

Table 15

SELECTED CHARACTERISTICS OF UIC FALL 2000 NEW TRANSFER STUDENTS<sup>1</sup>

TWO-YEAR COLLEGES		FOUR-YEAR COLLEGES	
		Fall Enrollment	
1134		498	
69.5%		30.5%	
		Transfer GPA	
31.3%		4.26 - 5.00	
40.3%		3.76 - 4.25	
25.3%		3.26 - 3.75	
3.1%		Below 3.26	
		Age as of 12/31/2000	
4.5%		Less than 20	
42.9%		20 - 21	
21.2%		22 - 23	
20.5%		24 - 29	
10.8%		30 and over	
		Gender	
45.9%		Male	
54.1%		Female	
		Race/Ethnicity	
0.2%		Am.Ind./Alaskan Nat.	
7.8%		Black	
14.0%		Asian/ Pac. Islander	
14.6%		Hispanic	
56.7%		White	
2.4%		International	
4.4%		Not Reported	
		Class Level at Transfer	
6.8%		Advanced Freshman	
47.0%		Sophomore	
37.6%		Junior	
8.3%		Senior	
0.4%		Second Bachelor	
		Major Feeder Institutions	
DuPage	153	UIUC	64
Harper	113	Northeastern	40
Moraine Valley	108	SIU-Carbondale	25
Oakton	96	Northern	21
CCC-Harold Washington	69	Eastern	16

<sup>1</sup> Unknown or not reported institutions are not included in the distribution unless indicated otherwise.

DATA SOURCE: 2000, ISIS Database

Table 16

SELECTED CHARACTERISTICS OF  
UIC FALL 2000 NEW PROFESSIONAL AND GRADUATE STUDENTS

Fall Enrollment		<u>Graduate</u> 1,978	<u>Professional</u> 553
Gender	Male	41.1%	48.1%
	Female	58.9%	51.9%
Age	Less than 22	4.3%	20.3%
	22 - 23	22.8%	43.2%
	24 - 29	43.9%	30.4%
	30 - 39	19.4%	5.4%
	40 & over	9.6%	0.7%
Race/Ethnicity	Am.Ind./Alaskan Nat.	0.3%	0.2%
	Black	8.7%	5.6%
	Asian/Pac. Islander	6.8%	32.9%
	Hispanic	6.6%	7.1%
	White	44.1%	51.0%
	International	29.7%	1.1%
	Unknown	3.7%	2.2%
Residency	Resident	59.8%	89.9%
	Non-Resident	40.2%	10.1%
Graduate Status	Full-Time	56.3%	99.6%
	Part-Time	43.7%	0.4%

DATA SOURCE: 2000, ISIS Database

UIC First-Time Freshmen  
By County of Origin  
Fall 2000

Total = 2,746

Summary - All Freshmen	
IL Freshmen (incl. county not avail.)	2,746
Out-of-State & Int'l.	97
Total	2,843

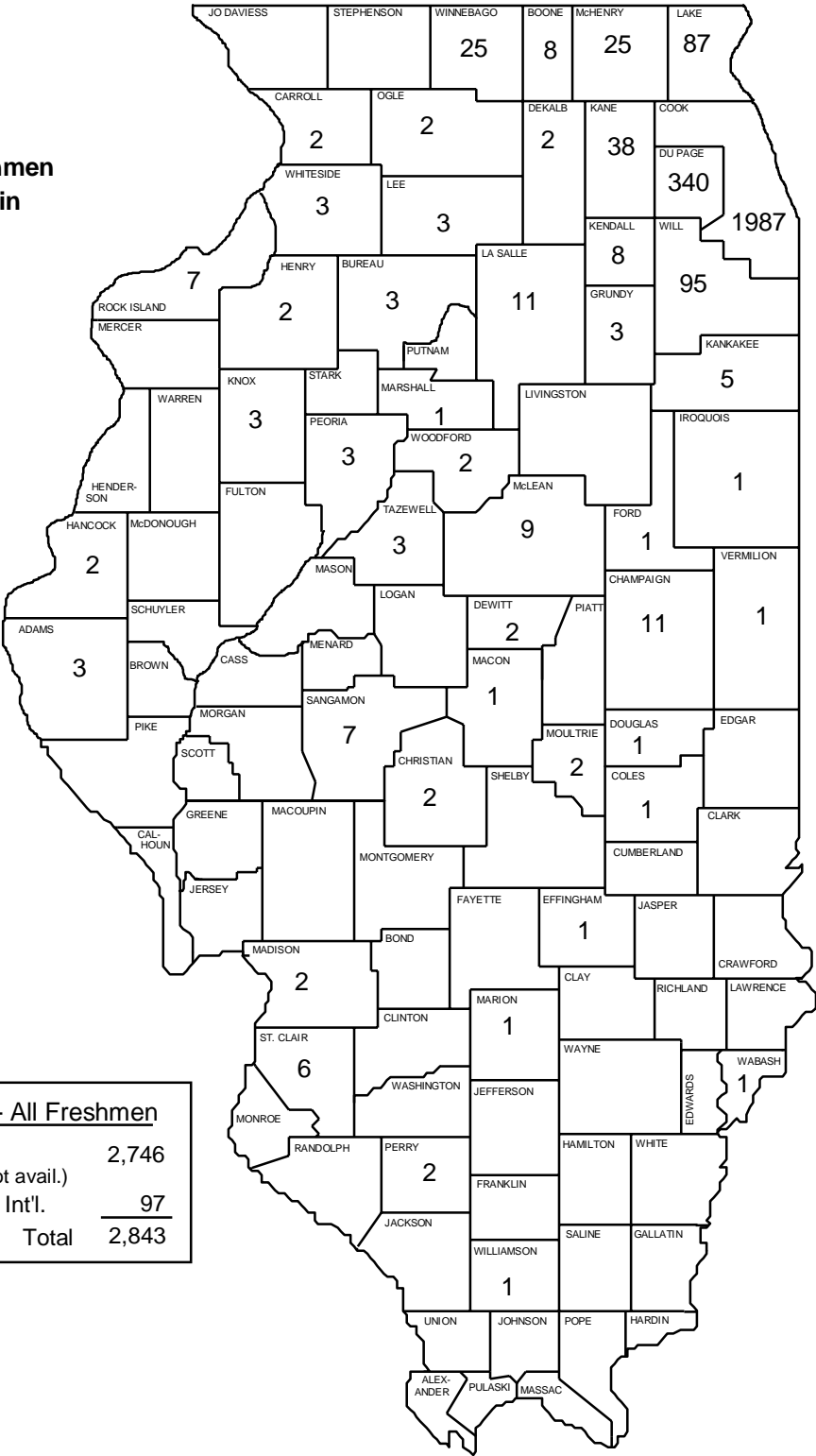


Figure 12

# Chicago Campus

New Students

Page 24

## UIC Community College Transfers First-Time Undergraduate Transfers Fall 2000

Total = 1,074

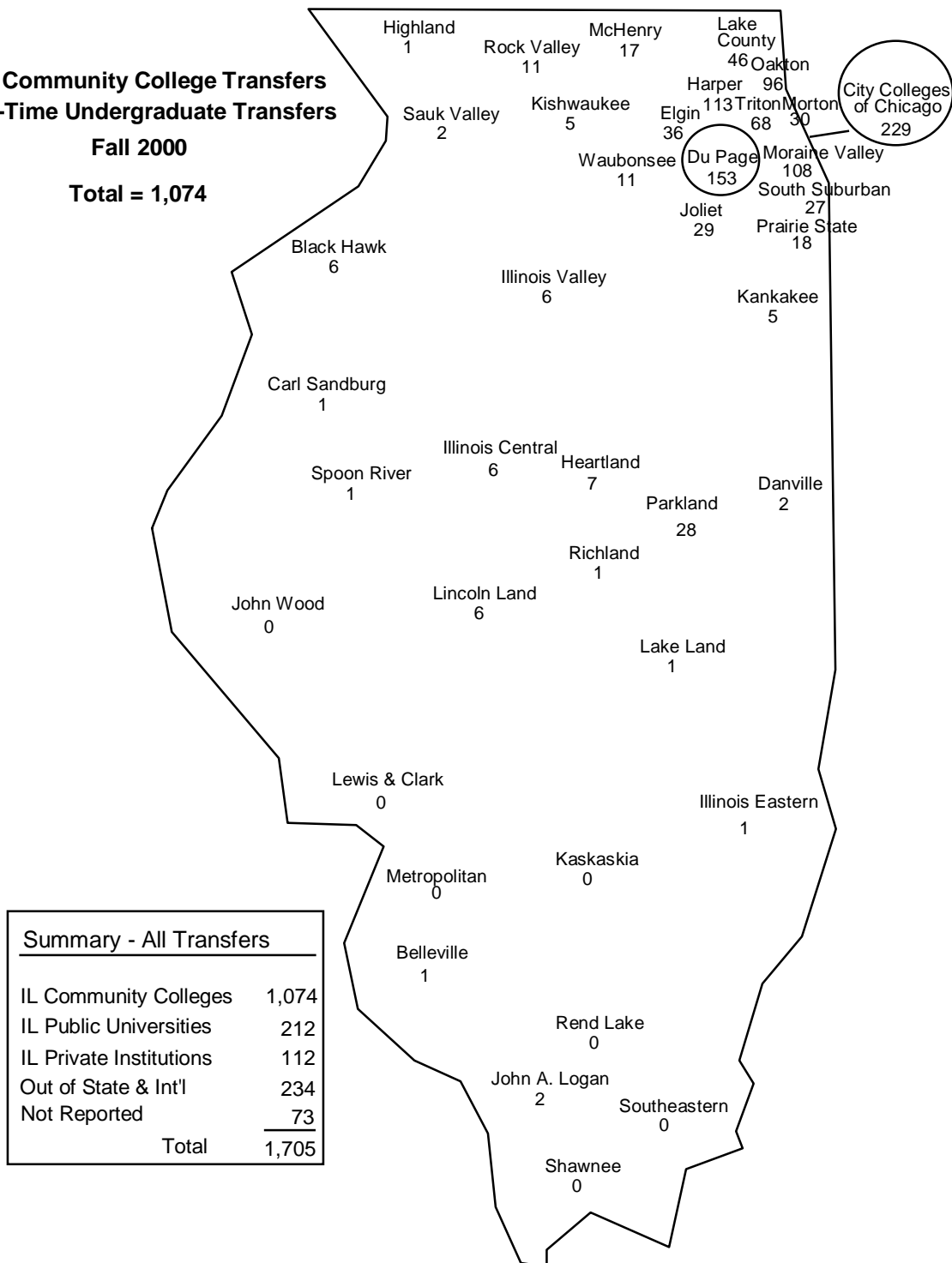


Figure 13

## GEOGRAPHICAL DISTRIBUTION OF UIC NEW STUDENT RESIDENCY

FALL 2000

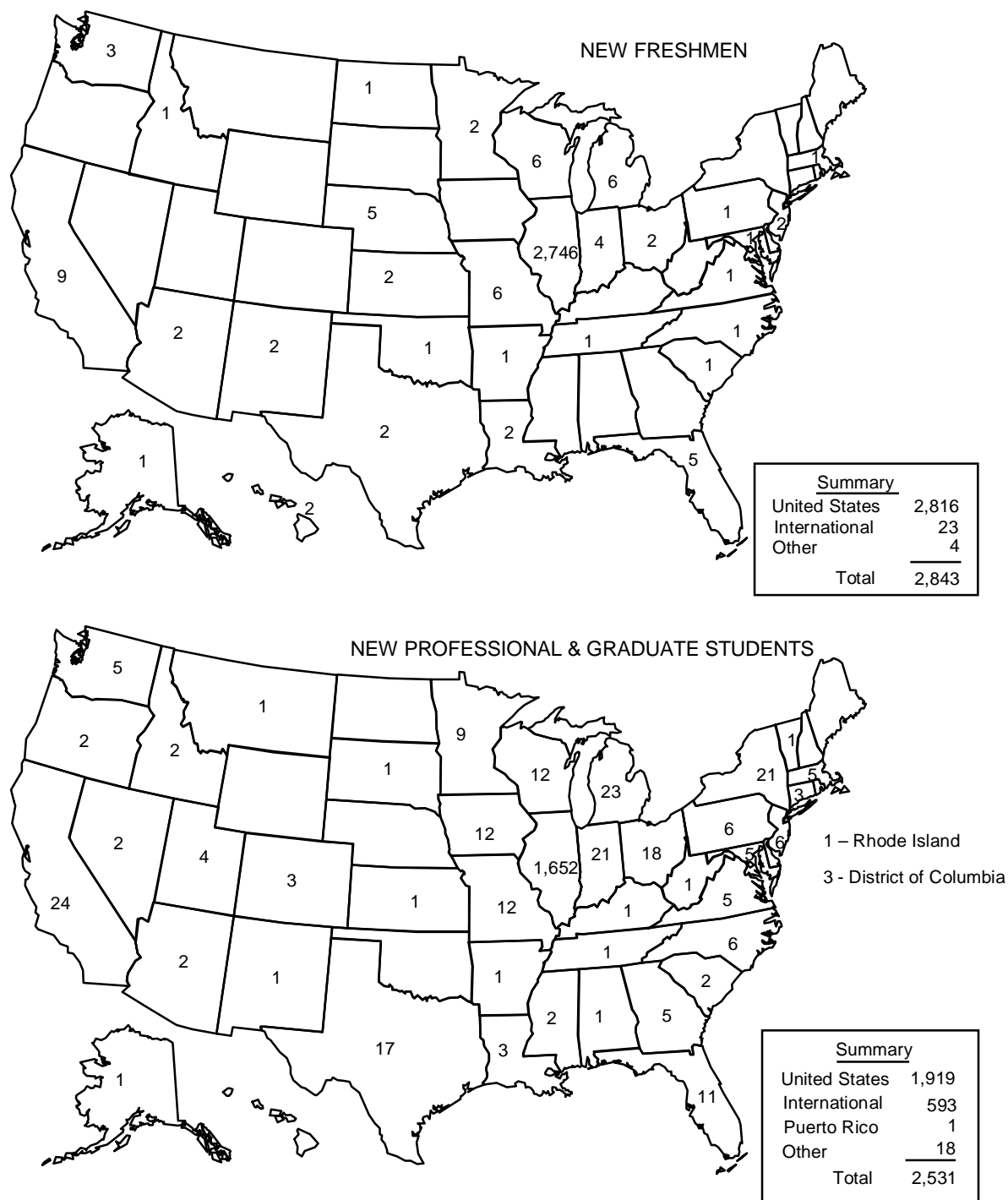


Figure 14

"Other" includes U.S. citizens using foreign addresses.

DATA SOURCE: 2000, ISIS Database

---

# Academic Performance

## UIC

---

### **HIGHLIGHTS**

- *Retention, which reflects the combination of graduated and still enrolled students, illustrates attendance patterns at UIC. While 30 percent graduated, over 36 percent of the 1995 freshman cohort are still enrolled in the fifth year. In the eighth year, graduated and enrolled are 41 percent and 3 percent, respectively, for the 1992 cohort. Graduation rates in year four and five are up with the most recent cohort by about 4 percentage points. See Table 17.*
- *The six-year retention rate of Hispanic, Asian, and White students in the 1993 cohort is similar, at just around 40 percent. However, Black student retention is about 20 percentage points lower than the aforementioned groups. The six-year rate of the latest cohort of Black students is somewhat lower than recent ones but higher than earlier cohorts. See Figure 15.*
- *First-time transfers who matriculated to UIC in fall 1980, 1989, and 1995 are tracked for five years following transfer as shown in Table 18 and Figure 16. Thirty-three percent graduated from the 1980 cohort, 44 percent from the 1989 cohort, and 52 percent from the 1995 cohort.*
- *Retention data for the 1989 and 1995 transfer cohorts are broken down by class level in Table 19. Students who transfer as juniors show higher graduation and retention rates than any other class, and the graduation rates of the 1995 cohort are higher than the 1989 cohort at each class level.*

This page intentionally left blank.

Table 17

**RETENTION PATTERNS FOR UIC BEGINNING FRESHMEN  
PERCENT GRADUATED OR ENROLLED BY YEARS SINCE MATRICULATION**

Fall Entering Term	Number in Cohort	Years After Matriculation						
		2	3	4	5	6	7	8
1990	2,542	69.3	54.3	47.7	34.0	14.9	6.8	3.0
1991	2,513	70.8	51.9	43.7	31.8	13.9	6.5	3.2
1992	2,667	70.4	53.5	47.7	34.5	15.7	6.1	2.7
1993	2,710	67.6	54.2	47.0	35.6	15.6	6.5	2.7
1994	2,572	69.7	54.1	47.9	35.8	14.7	5.7	
1995	2,533	72.5	59.1	51.8	36.6	15.3		
1996	2,807	74.0	59.8	51.6	34.0			
1997	2,890	75.1	60.7	52.6				
1998	2,947	74.8	59.2				PERCENT STILL ENROLLED	
1999	2,616	77.3						
1990		0.0	0.4	9.0	26.7	35.4	39.7	41.3
1991		0.1	0.3	7.1	23.2	31.2	35.4	37.2
1992		0.0	0.3	8.0	25.3	35.5	39.5	40.9
1993		0.0	0.3	7.2	26.3	35.5	39.3	
1994		0.0	0.2	8.0	26.1	36.1		
1995		0.0	0.4	10.9	30.3			
1996		0.0	1.1	14.3			CUMULATIVE PERCENT GRADUATED	
1997		0.0	1.2					
1998		0.0						
1990		69.3	54.7	56.7	60.7	50.3	46.5	44.3
1991		70.9	52.2	50.8	55.0	45.1	41.9	40.4
1992		70.4	53.8	55.7	59.8	51.2	45.6	43.6
1993		67.6	54.5	54.2	61.9	51.1	45.8	
1994		69.7	54.3	55.9	61.9	50.8		
1995		72.5	59.5	62.7	66.9			
1996		74.0	60.9	65.9				
1997		75.1	61.9				PERCENT RETENTION	
1998		74.8						

The "percent still enrolled" refers to part-time and full-time students enrolled as an undergraduate on the fall term census date. Degrees are reported by fiscal year, that is, through the spring term of the year in question. Summer degrees are included with the subsequent fall and spring terms. "Percent retention" includes the percent still enrolled plus the cumulative percent of those who have graduated. The methodology is slightly revised from previous years. With this methodology, enrollment data are available for a cohort in a particular year, while graduation, and thus retention, data are not.

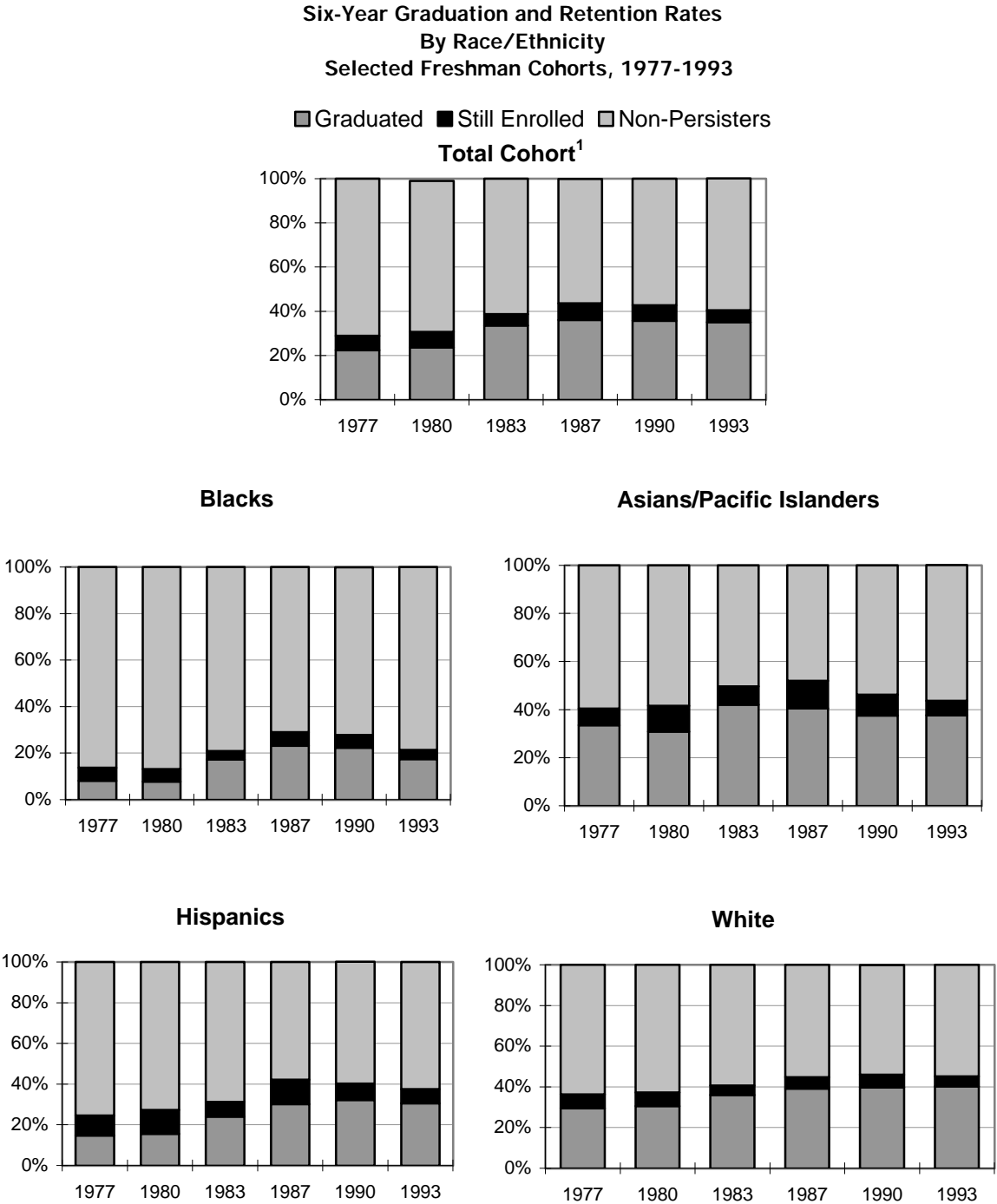


Figure 15

<sup>1</sup> Includes Native Americans, foreign students, and those with unknown race/ethnicity.  
DATA SOURCE: Data Resources & Institutional Analysis: UIC

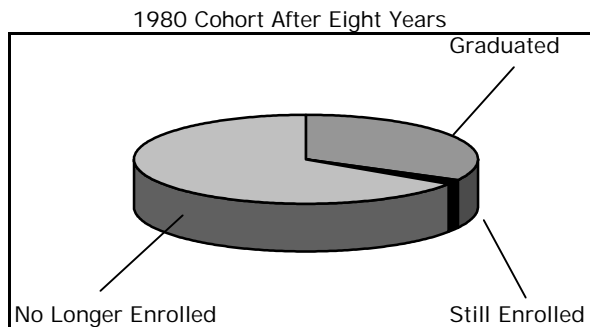
Table 18

**RETENTION PATTERNS FOR UIC FIRST-TIME TRANSFERS  
FOR 1980, 1989, AND 1995 COHORTS**

1980 Cohort After Eight Years

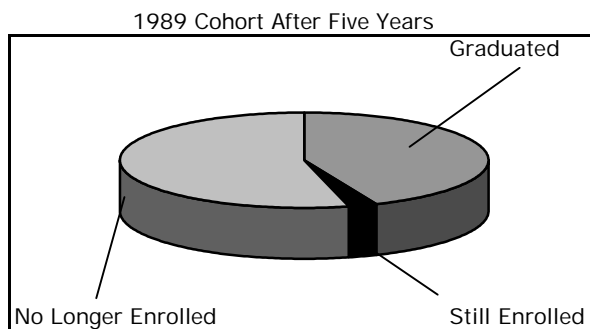
Number in Cohort: 2,079

	<u>Number</u>	<u>Percentage</u>
Graduated	684	32.9%
Still Enrolled	31	1.5%
No Longer Enrolled	1,364	65.6%
Total	<u>2,079</u>	<u>100.0%</u>

1989 Cohort After Five Years

Number in Cohort: 1,862

	<u>Number</u>	<u>Percentage</u>
Graduated	814	43.7%
Still Enrolled	45	2.4%
No Longer Enrolled	1,003	53.9%
Total	<u>1,862</u>	<u>100.0%</u>

1995 Cohort After Five Years

Number in Cohort: 1,902

	<u>Number</u>	<u>Percentage</u>
Graduated	993	52.2%
Still Enrolled	67	3.5%
No Longer Enrolled	842	44.3%
Total	<u>1,902</u>	<u>100.0%</u>

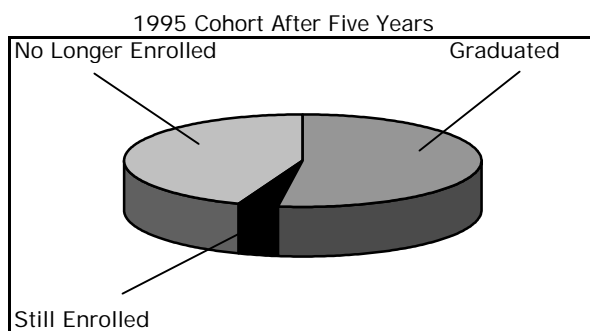


Figure 16

Non-degree transfers not included in total.

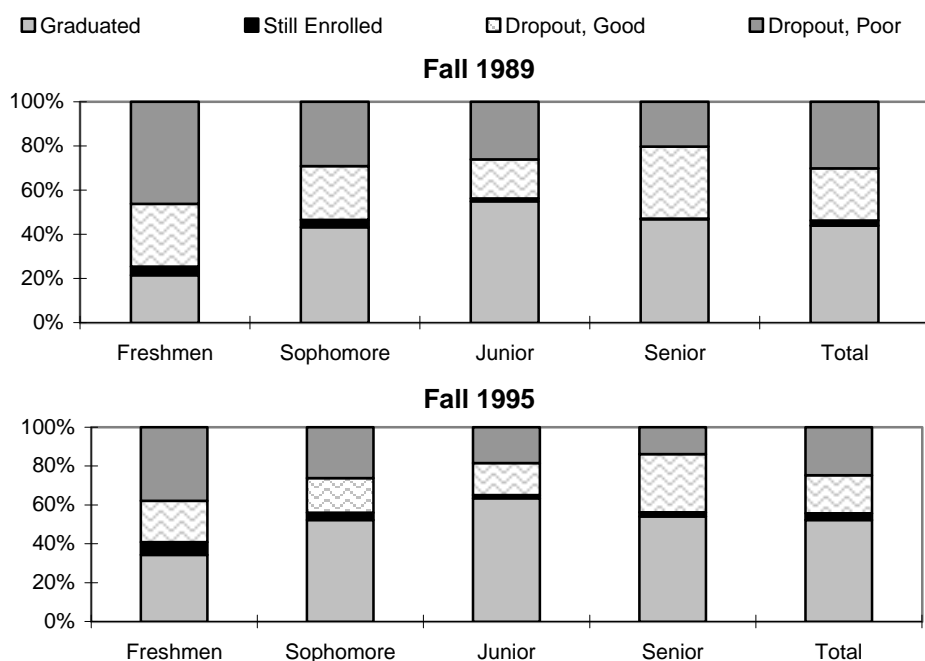
DATA SOURCES: 1980, Office of Planning and Resources Management

1989, 1995, Data Resources and Institutional Analysis:UIC

**Table 19**  
**UIC RETENTION RATES FOR NEW TRANSFERS AFTER FIVE YEARS**  
**BY CLASS LEVEL**  
**FALL 1989 AND FALL 1995 COHORTS**

Five-Year Retention and Graduation Rates Fall 1989 & Fall 1994 New Degree-Seeking Transfers										
	Freshman		Sophomore		Junior		Senior		Total	
<u>Retention</u>	<u>1989</u>	<u>1995</u>	<u>1989</u>	<u>1995</u>	<u>1989</u>	<u>1995</u>	<u>1989</u>	<u>1995</u>	<u>1989</u>	<u>1995</u>
Graduated	21.5	34.3	43.0	52.1	54.7	63.4	46.7	54.0	43.8	52.2
Still Enrolled	3.8	6.6	3.3	3.8	1.4	1.6	0.3	2.1	2.4	3.5
Subtotal	25.3	40.9	46.3	56.0	56.1	65.0	47.0	56.1	46.2	55.7
<u>No Longer Enrolled<sup>1</sup></u>										
Good Standing	28.4	21.2	24.3	17.9	17.6	16.5	32.4	30.0	23.5	19.6
Poor Standing	46.3	37.9	29.0	26.1	26.0	18.5	20.3	13.9	30.1	24.7
Subtotal	74.7	59.1	53.3	44.0	43.6	35.0	52.7	43.9	53.6	44.3

**New Transfer Graduation and Retention Rates**



**Figure 16.1**

Dropout in poor standing includes probation and dropped by university action.

<sup>1</sup> 1989 Cohort: Dropouts in unknown standing (N=7) and nondegree transfers (N=114) not shown. Total Cohort numbers 1,983.

1995 Cohort: Dropouts in unknown standing (N=9) and nondegree transfers (N=54) not shown. Total Cohort numbers 1,965.

DATA SOURCE: UIC Student Data Books.

This page intentionally left blank.

---

# Degrees Conferred

## UIC

---

### **HIGHLIGHTS**

- *In FY 2000, the campus conferred 5,409 degrees, up approximately 350 from last year and 900 from ten years ago. See Table 20 and Figure 17. Degrees granted have increased substantially particularly at the master's level, up by 45 percent since FY 1990.*
- *Table 21 and Figure 18 display the number of undergraduate degrees conferred by college since 1990, with 3,010 in 2000. The number of degrees conferred in the largest college, Liberal Arts and Sciences, peaked this fall as did the total number of baccalaureate degrees.*
- *Table 22 and Figure 19 report degrees conferred by level and by gender in FY 2000. Females account for 56 percent of the undergraduate degrees, 60 percent of the master's, 49 percent of the doctorate, and 44 percent of professional degrees.*
- *Tables 23 and 23.1 report the number and percent of FY 2000 degrees conferred by race/ethnicity. Overall, 47 percent of FY 2000 degrees were granted to White students compared to 67 percent in FY 1990. The percentage of degrees awarded to Black and Hispanic students combined, varies from 24 percent of baccalaureate degrees, 16 percent of professional degrees, 13 percent of master's, to 2 percent of doctoral degrees.*

Table 20

**NUMBER OF UIC DEGREES CONFERRED BY LEVEL  
FY 1990 - FY 2000**

DEGREE	1990	1991	1992	1993	1994	1995	1996	1997	1998	1999	2000
Bachelor's	2,618	2,891	2,651	2,533	2,805	3,003	2,788	2,769	2,974	2,822	3,010
Master's	1,136	1,299	1,379	1,356	1,451	1,519	1,428	1,488	1,540	1,445	1,644
Doctorate	182	200	202	247	235	246	241	242	224	221	204
Professional <sup>1</sup>	554	527	483	542	526	533	497	525	563	555	551
<b>Campus Total</b>	<b>4,490</b>	<b>4,917</b>	<b>4,715</b>	<b>4,678</b>	<b>5,017</b>	<b>5,301</b>	<b>4,954</b>	<b>5,024</b>	<b>5,301</b>	<b>5,043</b>	<b>5,409</b>

**Percent Change in UIC Degrees Conferred  
by Level -- FY 1990 and FY 2000**

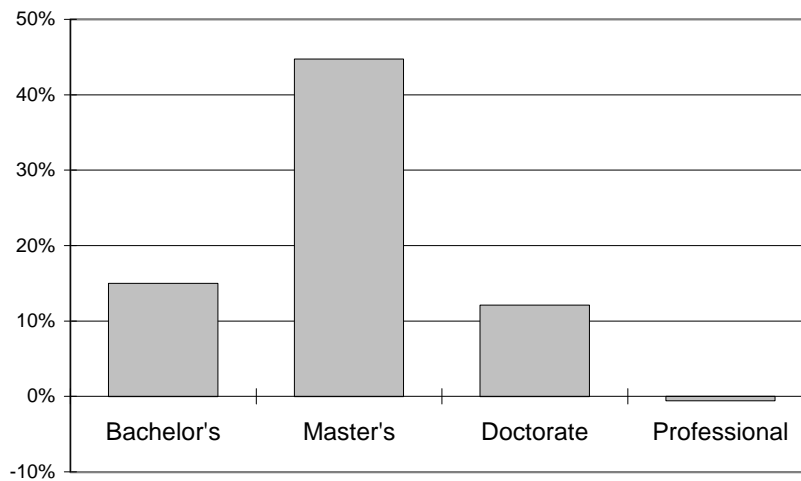


Figure 17

<sup>1</sup> Professional degrees include medicine, dentistry, pharmacy, and advanced certificates in dentistry.

DATA SOURCES: 1990,1993-2000,Research Data Base: UOAPA

1991-1992, Data Resources & Institutional Analysis: UIC

Table 21

**NUMBER OF UIC UNDERGRADUATE DEGREES CONFERRED BY COLLEGE  
FY 1990 - FY 2000**

COLLEGE	1990	1991	1992	1993	1994	1995	1996	1997	1998	1999	2000
Architecture & the Arts <sup>1</sup>	151	188	198	186	198	209	188	244	219	189	221
Hlth & Human Dev. Sci.	161	174	112	117	232	264	258	253	245	216	229
Business Administration	545	585	606	567	630	618	500	508	461	550	639
Dentistry	39	53	43	39	35	62	43	27	43	40	38
Education <sup>2</sup>	81	89	120	72	59	94	85	66	109	89	100
Engineering	378	360	322	337	303	359	355	315	393	353	342
Kinesiology	38	54	42	31	10	--	--	--	--	--	--
Liberal Arts & Sciences	1,006	1,180	1,047	1,032	1,121	1,104	1,095	1,142	1,263	1,194	1,286
Nursing	188	172	124	119	170	249	219	167	196	157	122
Social Work	31	36	37	33	47	44	45	47	45	34	33
<b>Campus Total</b>	<b>2,618</b>	<b>2,891</b>	<b>2,651</b>	<b>2,533</b>	<b>2,805</b>	<b>3,003</b>	<b>2,788</b>	<b>2,769</b>	<b>2,974</b>	<b>2,822</b>	<b>3,010</b>

**Percent Change in UIC Undergraduate Degrees  
Conferred by College  
FY 1990 and FY 2000**

AA = ARCH./ART  
 HHDS = HLTH & HUMAN DEV.SCI.<sup>3</sup>  
 BA = BUSINESS ADMIN.  
 DENT = DENTISTRY  
 ED = EDUCATION  
 ENGR = ENGINEERING  
 LAS = LIBERAL ARTS & SCI.  
 NURS = NURSING  
 SW = SOCIAL WORK

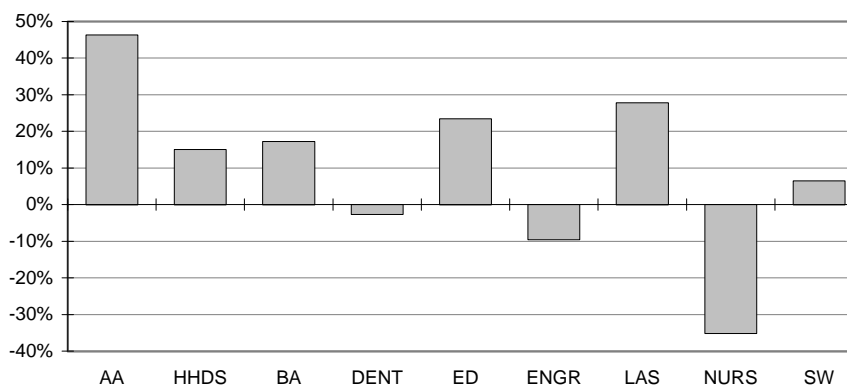


Figure 18

<sup>1</sup> In 1995, Architecture, Art, and Urban Planning changed to Architecture and the Arts. Urban Planning is now a part of Urban Policy and Public Affairs in the Graduate College.

<sup>2</sup> In order to meet changes in state requirements for teacher certification in 1992, students either accelerated studies or delayed graduation. This pattern affected the number of graduates for FY 1992 and FY 1993.

<sup>3</sup> As of 1993, Kinesiology is a part of the College of Health & Human Development Sciences. In Figure 18, 1990 data for Kinesiology was added to Health & Human Development Sciences to make an accurate comparison to 1999 data.

DATA SOURCES: 1990, 1993-2000, Research Data Base: UOAPA

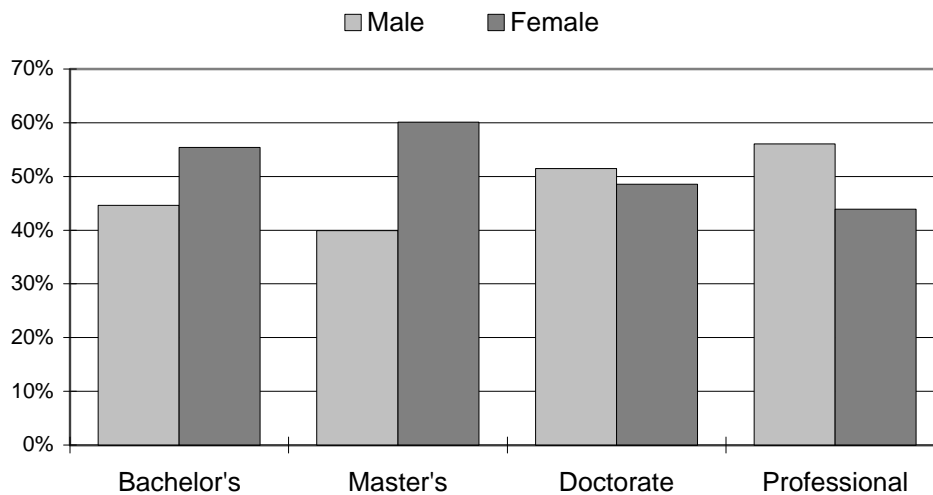
1991-1992, Data Resources & Institutional Analysis: UIC

**Table 22**

**NUMBER AND PERCENT OF UIC DEGREES CONFERRED BY LEVEL BY GENDER  
FY 2000**

LEVEL	MALE		FEMALE		TOTAL	
	Number	Percent	Number	Percent	Number	Percent
Bachelor's	1,343	44.6%	1,667	55.4%	3,010	100.0%
Master's	656	39.9%	988	60.1%	1,644	100.0%
Doctorate	105	51.5%	99	48.5%	204	100.0%
Professional <sup>1</sup>	309	56.1%	242	43.9%	551	100.0%
Campus Total	2,413	44.6%	2,996	55.4%	5,409	100.0%

**Percent of UIC Degrees Conferred  
by Gender -- FY 2000**



**Figure 19**

<sup>1</sup> Professional degrees include medicine, dentistry, pharmacy, and advanced certificates in dentistry.

**Table 23****NUMBER OF UIC DEGREES CONFERRED BY RACE/ETHNICITY  
FY 2000**

<u>LEVEL</u>	<u>Am. Ind./ Alask.Nat.</u>	<u>Asian/ Pac. Isl.</u>	<u>Black</u>	<u>Hispanic</u>	<u>White</u>	<u>Int'l</u>	<u>Unknown</u>	<u>Total</u>
Bachelor's	4	695	257	446	1,438	64	106	3,010
Master's	8	97	128	79	764	509	59	1,644
Doctorate	0	10	4	0	101	84	5	204
Professional <sup>1</sup>	2	180	34	52	255	16	12	551
<b>Campus Total</b>	<b>14</b>	<b>982</b>	<b>423</b>	<b>577</b>	<b>2,558</b>	<b>673</b>	<b>182</b>	<b>5,409</b>

**Table 23.1****PERCENT OF UIC DEGREES CONFERRED BY RACE/ETHNICITY  
FY 2000**

<u>LEVEL</u>	<u>Am. Ind./ Alask.Nat.</u>	<u>Asian/ Pac. Isl.</u>	<u>Black</u>	<u>Hispanic</u>	<u>White</u>	<u>Int'l</u>	<u>Unknown</u>	<u>Total</u>
Bachelor's	0.1%	23.1%	8.5%	14.8%	47.8%	2.1%	3.5%	100.0%
Master's	0.5%	5.9%	7.8%	4.8%	46.5%	31.0%	3.6%	100.0%
Doctorate	0.0%	4.9%	2.0%	0.0%	49.5%	41.2%	2.5%	100.0%
Professional <sup>1</sup>	0.4%	32.7%	6.2%	9.4%	46.3%	2.9%	2.2%	100.0%
<b>Campus Total</b>	<b>0.3%</b>	<b>18.2%</b>	<b>7.8%</b>	<b>10.7%</b>	<b>47.3%</b>	<b>12.4%</b>	<b>3.4%</b>	<b>100.0%</b>

<sup>1</sup> Professional degrees include medicine, dentistry, pharmacy, and advanced certificates in dentistry.

Note: Totals may not equal 100.0% due to rounding.

DATA SOURCE: 2000, Research Data Base: UOAPA

This page intentionally left blank.