

Table 1

**UIC FALL ENROLLMENT BY LEVEL
FALL 1987 - FALL 1997**

LEVEL	1987	1988	1989	1990	1991	1992	1993	1994	1995	1996	1997
Freshman	4,017	4,409	4,337	4,704	4,384	4,527	4,550	4,269	4,357	4,352	4,477
Sophomore	3,090	2,847	3,120	3,204	3,214	3,117	3,022	3,014	3,065	3,052	3,176
Junior	3,610	3,583	3,506	3,616	3,568	3,543	3,377	3,457	3,375	3,420	3,312
Senior	4,781	4,727	4,671	4,643	4,477	4,939	5,302	5,354	5,272	5,290	5,227
Other	393	374	311	298	194	160	183	112	73	76	91
Subtotal	15,891	15,940	15,945	16,465	15,837	16,286	16,434	16,206	16,142	16,190	16,283
Grad I	2,947	3,092	3,051	3,443	3,855	3,971	3,944	3,846	3,658	3,614	3,665
Grad II	1,449	1,452	1,636	1,735	1,587	1,749	1,855	1,883	1,835	1,841	1,735
Nondegree	618	571	575	663	672	737	670	615	619	615	613
Subtotal	5,014	5,115	5,262	5,841	6,114	6,457	6,469	6,344	6,112	6,070	6,013
Professional	2,269	2,273	2,243	2,205	2,257	2,273	2,267	2,315	2,335	2,323	2,282
Resident	739	759	745	809	862	875	945	902	970	970	970
Subtotal	3,008	3,032	2,988	3,014	3,119	3,148	3,212	3,217	3,305	3,293	3,252
Campus Total	23,913	24,087	24,195	25,320	25,070	25,891	26,115	25,767	25,559	25,553	25,548

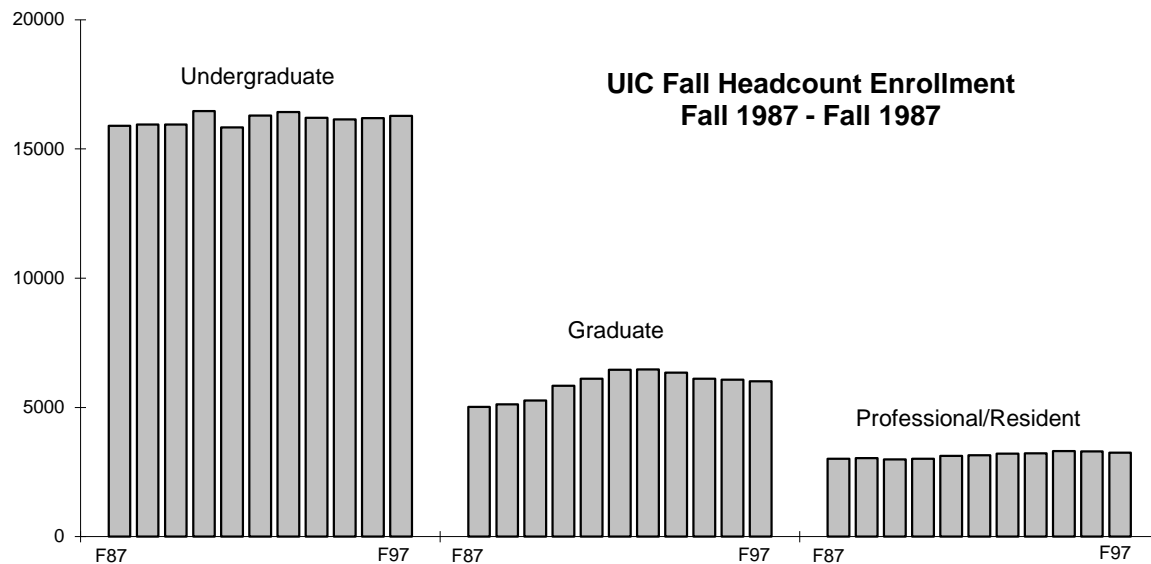


Figure 1

DATA SOURCES: 1987-1988, 1997, Student Data Books: UIC
 1989-1992, Data Resources and Institutional Analysis: UIC
 1992-1996, Research Data Base: UOAPA, Data Resources and Institutional Analysis: UIC

Table 2

**UIC FALL UNDERGRADUATE ENROLLMENT BY ADMISSION CATEGORY
FALL 1987 - FALL 1997**

LEVEL	1987	1988	1989	1990	1991	1992	1993	1994	1995	1996	1997
Beginning Freshmen	2,282	2,609	2,552	2,542	2,513	2,697	2,710	2,571	2,529	2,807	2,890
New Transfers	2,403	2,430	2,312	2,572	2,328	2,265	2,159	2,080	1,957	1,813	1,751
Readmits ¹	1,009	928	932	937	653	584	472	389	387	413	334
Continuing Students	10,197	9,973	10,149	10,414	10,343	10,740	11,093	11,166	11,269	11,157	11,308
Total	15,891	15,940	15,945	16,465	15,837	16,286	16,434	16,206	16,142	16,190	16,283

Table 2.1

**A COMPARISON OF FALL 1987 AND FALL 1997 UNDERGRADUATE ENROLLMENT
AS A PERCENTAGE OF TOTAL ENROLLMENT**

LEVEL	1987	1997	Change in % of Total
Beginning Freshmen	14.4%	17.7%	3.4
New Transfers	15.1%	10.8%	(4.4)
Readmits	6.3%	2.1%	(4.3)
Continuing Students	64.2%	69.4%	5.3
TOTAL	100.0%	100.0%	

**UIC New Student Enrollment
Fall 1987 - Fall 1997**

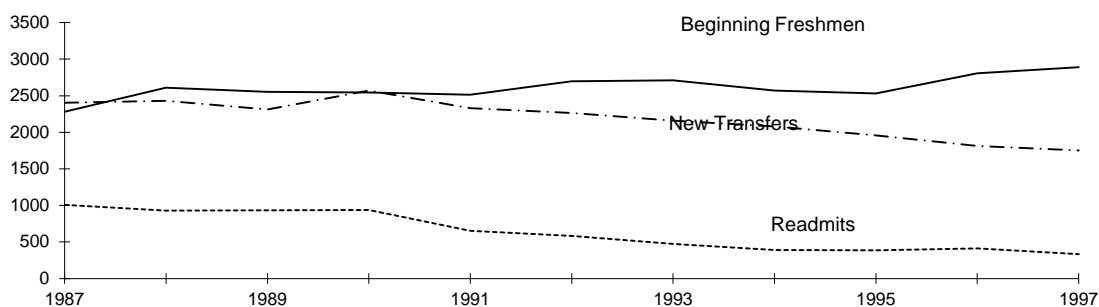


Figure 2

¹ The number of readmits decreased in later years due to changes in processing and policy. In the past, students were required to apply for readmission if they were not enrolled during the previous term. Beginning Spring 1993, readmission is required only after "stopping out" two or more terms.

Note: Total may not equal 100.0% due to rounding.

DATA SOURCES: 1987-1988, 1997, Student Data Books: UIC

1989-1991, Data Resources and Institutional Analysis: UIC

1992-1996, Research Data Base: UOAPA

Table 3

**UIC UNDERGRADUATE ENROLLMENT BY COLLEGE
FALL 1987 - FALL 1997**

COLLEGE	1987	1988	1989	1990	1991	1992	1993	1994	1995	1996	1997
Architecture & Arts ¹	1,133	1,142	1,161	1,185	1,132	1,090	1,118	1,101	1,161	1,206	1,124
Assoc. Health Prof. ²	338	348	346	338	328	357	742	763	749	689	687
Business Admin.	2,803	2,605	2,699	2,964	2,813	2,655	2,398	2,346	2,304	2,250	2,430
Education	108	142	123	162	157	150	157	182	165	196	215
Engineering	2,220	2,160	2,077	2,010	2,036	2,031	1,979	1,885	1,892	1,967	2,018
Kinesiology ²	245	254	267	287	267	294	--	--	--	--	--
Liberal Arts & Sci.	8,628	8,799	8,780	9,093	8,733	9,297	9,515	9,224	9,129	9,104	9,085
Nursing	382	416	414	337	294	333	434	615	641	679	639
Social Work	34	74	78	89	77	79	91	90	101	99	85
Campus Total	15,891	15,940	15,945	16,465	15,837	16,286	16,434	16,206	16,142	16,190	16,283

**Percent Change in UIC Undergraduate
Enrollment by College
Fall 1987 - Fall 1997**

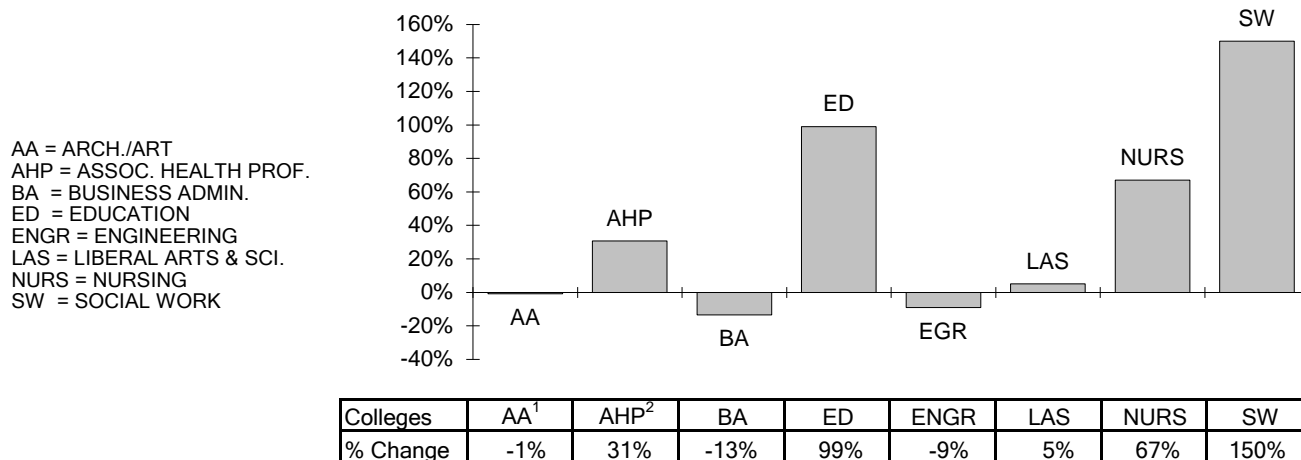


Figure 3

¹ In 1995, Architecture, Art, and Urban Planning changed to Architecture and the Arts. Urban Planning is now a part of Urban Policy and Public Affairs in the Graduate College.

² As of 1993, Kinesiology is a part of the College of Associated Health Professions. In Figure 3, 1987 data for Kinesiology was added to Associated Health Professions to make an accurate comparison to 1997 data.

DATA SOURCES: 1987-1989, 1997, Student Data Books: UIC
1990-1991, Data Resources and Institutional Analysis: UIC
1992-1996, Research Data Base: UOAPA

Table 4

**UIC GRADUATE ENROLLMENT BY COLLEGE
FALL 1989 - FALL 1997**

COLLEGE	LEVEL	1989	1990 ¹	1991	1992	1993	1994	1995	1996	1997
Architecture & the Arts ²	GI	289	216	329	357	354	334	202	197	220
	GII	27	137	20	23	33	42	6	4	2
	Unassigned	23	15	12	16	8	11	4	2	5
Assoc. Health Professions	GI	85	53	90	80	147	169	147	148	145
	GII	0	29	0	0	0	0	0	0	19
	Unassigned	0	6	9	3	17	7	4	16	12
Business Administration	GI	519	428	578	582	483	440	484	544	557
	GII	67	192	43	65	85	87	83	86	85
	Unassigned	53	50	32	15	16	35	46	41	24
Dentistry	GI	6	2	4	4	5	7	5	2	7
	GII	0	4	0	0	0	0	0	2	0
	Unassigned	0	0	1	0	0	0	0	0	0
Education	GI	199	292	361	471	483	469	418	427	425
	GII	149	165	147	165	204	229	208	230	221
	Unassigned	39	46	49	30	24	16	14	11	13
Engineering	GI	406	538	543	551	485	413	415	444	493
	GII	306	225	287	339	361	316	282	284	271
	Unassigned	29	16	13	14	7	8	21	23	24
Graduate	GI	9	8 ³	1	0	0	0	0	0	0
	GII	1	5 ³	2	2	2	0	2	0	0
	Unassigned	303	366 ³	232	302	313	280	314	351	330
Kinesiology ⁴	GI	67	55	73	76	--	--	--	--	--
	GII	0	6	0	0	--	--	--	--	--
	Unassigned	8	25	13	9	--	--	--	--	--
Liberal Arts & Sciences	GI	637	795	799	788	723	680	622	569	505
	GII	652	542	584	611	625	646	607	597	602
	Unassigned	99	107	103	75	45	34	34	20	28
Medical	GI	67	76	79	67	66	71	66	58	73
	GII	105	105	133	127	129	124	143	135	131
	Unassigned	0	3	17	4	7	13	3	4	3
Nursing	GI	214	196	185	245	350	436	384	343	307
	GII	108	116	115	127	117	118	107	95	89
	Unassigned	0	4	96	156	115	99	97	72	80
Pharmacy	GI	53	46	28	32	40	30	46	61	55
	GII	31	45	67	63	64	64	66	63	68
	Unassigned	0	1	2	1	1	1	4	4	5
Public Health	GI	169	213	218	216	245	279	261	227	227
	GII	45	76	103	121	131	156	154	160	163
	Unassigned	0	2	76	93	101	98	43	47	47
Social Work	GI	331	525	567	502	563	518	505	489	503
	GII	145	88	86	106	104	101	91	90	35
	Unassigned	21	22	17	19	16	13	19	14	31
Urban Policy & Public Affairs	GI	0	0	0	0	0	0	103	105	148
	GII	0	0	0	0	0	0	86	95	49
	Unassigned	0	0	0	0	0	0	16	10	11
Total	GI	3,051	3,443	3,855	3,971	3,944	3,846	3,658	3,614	3,665
	GII	1,636	1,735	1,587	1,749	1,855	1,883	1,835	1,841	1,735
	Unassigned	575	663	672	737	670	615	619	615	613
		5,262	5,841	6,114	6,457	6,469	6,344	6,112	6,070	6,013

¹ The distribution of Graduate I and Graduate II students in Fall 1990 was based on hours earned. In previous and subsequent years, it was based on the hours earned and the degree sought.

² In 1995, Architecture, Arts, and Urban Planning changed to Architecture and the Arts. Urban Planning is now a part of Urban Policy and Public Affairs in the Graduate College.

³ Includes students without specialization codes.

⁴ As of 1993, Kinesiology is a part of the college of Associated Health Professions.

DATA SOURCES: 1989, 1991-1997 Student Data Books: UIC

1990, Data Resources and Institutional Analysis: UIC

Table 5

**UIC FALL ENROLLMENT BY LEVEL AND GENDER
FALL 1987 - FALL 1997**

LEVEL	1987	1988	1989	1990	1991	1992	1993	1994	1995	1996	1997
Undergraduate											
Male	8,364	8,273	8,192	8,430	8,040	8,172	8,035	7,784	7,626	7,513	7,517
Female	7,527	7,667	7,753	8,035	7,797	8,114	8,399	8,422	8,516	8,677	8,766
Subtotal	15,891	15,940	15,945	16,465	15,837	16,286	16,434	16,206	16,142	16,190	16,283
Graduate											
Male	2,408	2,500	2,567	2,794	2,812	2,919	2,794	2,690	2,579	2,611	2,596
Female	2,606	2,615	2,695	3,047	3,302	3,538	3,675	3,654	3,533	3,459	3,417
Subtotal	5,014	5,115	5,262	5,841	6,114	6,457	6,469	6,344	6,112	6,070	6,013
Professional/Res.											
Male	1,957	1,928	1,862	1,267	1,287	1,302	1,272	1,286	1,308	1,270	1,216
Female	1,051	1,104	1,126	938	970	971	995	1,029	1,027	1,053	1,066
Subtotal ¹	3,008	3,032	2,988	3,014	3,119	3,148	3,212	3,217	3,305	3,293	3,252
Campus Total											
Male	12,729	12,701	12,621	12,491	12,139	12,393	12,101	11,760	11,513	11,394	11,329
Female	11,184	11,386	11,574	12,020	12,069	12,623	13,069	13,105	13,076	13,189	13,249
Total	23,913	24,087	24,195	25,320	25,070	25,891	26,115	25,767	25,559	25,553	25,548

**UIC Enrollment Distribution by Gender
Fall 1987 - Fall 1997**

■ Males ■ Females

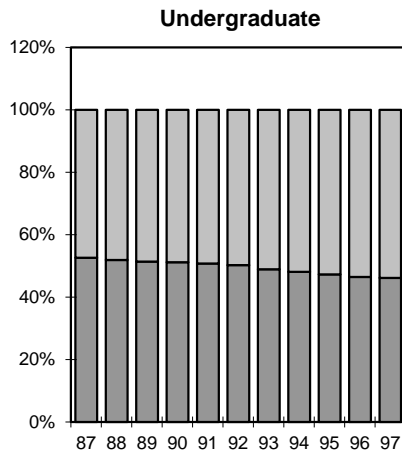


Figure 4

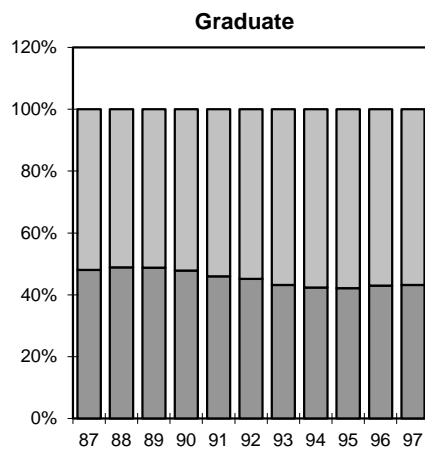


Figure 5

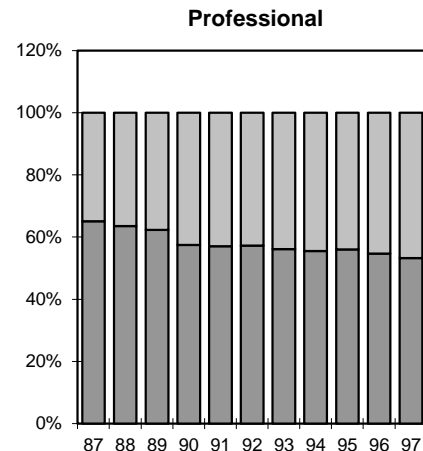


Figure 6

¹ Includes 809 residents in fall 1990, 862 residents in fall 1991, 875 residents in fall 1992, 945 residents in fall 1993, 902 residents in 1994, 970 residents in 1995, 970 residents in 1996, and 970 in 1997 for which data on gender were not available. These residents are not included in the percent distribution in Figure 6.

DATA SOURCES: 1987-1988, 1997, Student Data Books: UIC
 1989-1991, 1995-1996, Data Resources and Institutional Analysis: UIC
 1992-1994, Research Data Base: UOAPA

Table 6

**UIC UNDERGRADUATE ENROLLMENT BY COLLEGE AND GENDER
FALL 1987 - FALL 1997**

COLLEGE		1987	1988	1989	1990	1991	1992	1993	1994	1995	1996	1997
Architecture & the Arts ¹	Male	713	709	711	726	702	688	705	700	724	723	612
	Female	420	433	450	459	430	402	413	401	437	481	512
	Subtotal	1,133	1,142	1,161	1,185	1,132	1,090	1,118	1,101	1,161	1,204	1,124
Assoc. Health Professions ²	Male	41	54	53	51	58	73	290	303	286	263	285
	Female	297	294	293	287	270	284	452	460	463	428	402
	Subtotal	338	348	346	338	328	357	742	763	749	691	687
Business Administration	Male	1,499	1,394	1,438	1,606	1,466	1,397	1,261	1,246	1,207	1,156	1,252
	Female	1,304	1,211	1,261	1,358	1,347	1,258	1,137	1,100	1,097	1,096	1,178
	Subtotal	2,803	2,605	2,699	2,964	2,813	2,655	2,398	2,346	2,304	2,252	2,430
Education	Male	6	16	7	16	16	14	13	18	21	26	30
	Female	102	126	116	146	141	136	144	164	144	170	185
	Subtotal	108	142	123	162	157	150	157	182	165	196	215
Engineering	Male	1,872	1,812	1,745	1,673	1,686	1,648	1,619	1,519	1,521	1,595	1,638
	Female	348	348	332	337	350	383	360	366	371	371	380
	Subtotal	2,220	2,160	2,077	2,010	2,036	2,031	1,979	1,885	1,892	1,966	2,018
Kinesiology ²	Male	118	132	138	167	175	177	--	--	--	--	--
	Female	127	122	129	120	92	117	--	--	--	--	--
	Subtotal	245	254	267	287	267	294	--	--	--	--	--
Liberal Arts & Sciences	Male	4,096	4,132	4,066	4,149	3,896	4,126	4,081	3,912	3,774	3,669	3,631
	Female	4,532	4,667	4,714	4,944	4,837	5,171	5,434	5,312	5,355	5,432	5,454
	Subtotal	8,628	8,799	8,780	9,093	8,733	9,297	9,515	9,224	9,129	9,101	9,085
Nursing	Male	14	19	21	25	31	38	58	77	79	71	59
	Female	368	397	393	312	263	295	376	538	562	610	580
	Subtotal	382	416	414	337	294	333	434	615	641	681	639
Social Work	Male	5	5	13	17	10	11	8	9	10	10	10
	Female	29	69	65	72	67	68	83	81	91	89	75
	Subtotal	34	74	78	89	77	79	91	90	101	99	85
CAMPUS	Male	8,364	8,273	8,192	8,430	8,040	8,172	8,035	7,784	7,622	7,513	7,517
	Female	7,527	7,667	7,753	8,035	7,797	8,114	8,399	8,422	8,520	8,677	8,766
	TOTAL	15,891	15,940	15,945	16,465	15,837	16,286	16,434	16,206	16,142	16,190	16,283

¹ In 1995, Architecture, Art, and Urban Planning changed to Architecture and the Arts. Urban Planning is now part of Urban Policy and Public Affairs in the Graduate College.

² As of Fall 1993, Kinesiology is a part of the College of Associated Health Professions.

DATA SOURCES: 1987-1989, 1997, Student Data Books: UIC
1990-1991, Data Resources and Institutional Analysis: UIC
1992-1996, Research Data Base: UOAPA

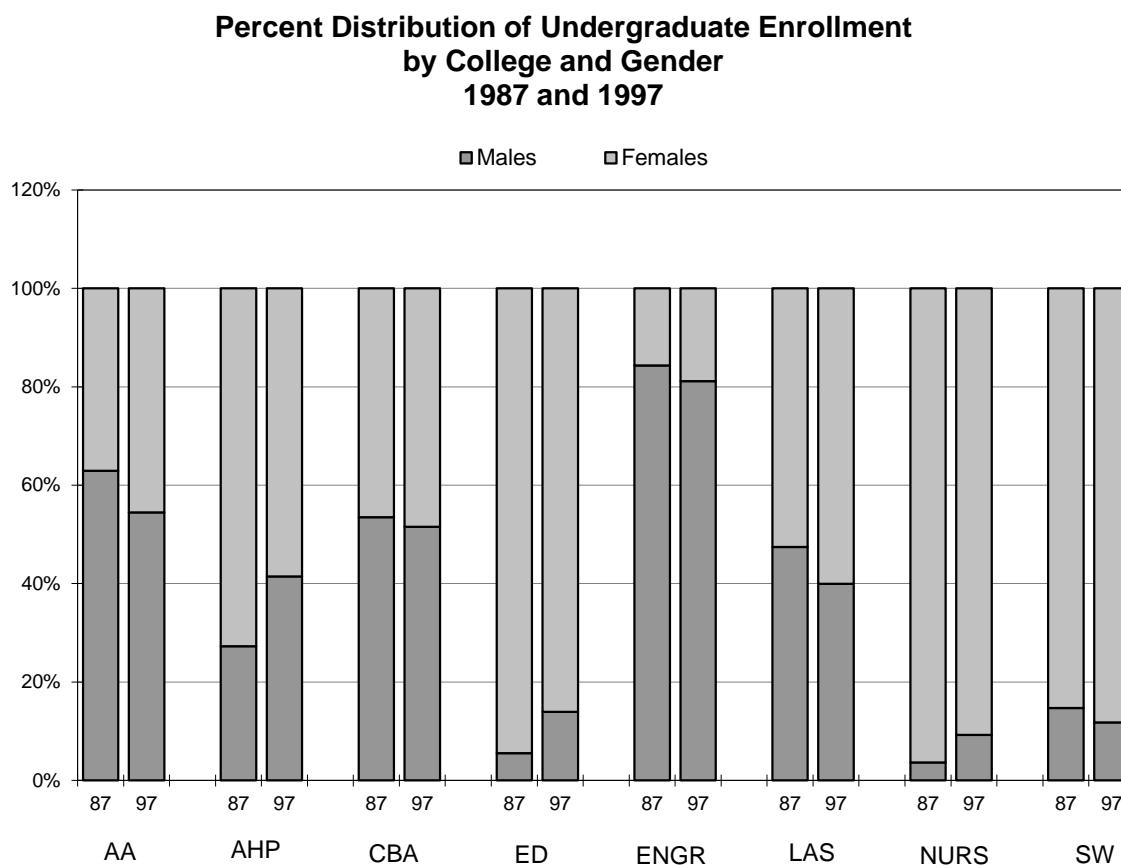


Figure 7

AA = ARCHITECTURE & ART¹

AHP = ASSOCIATED HEALTH PROFESSIONS²

CBA = COMMERCE & BUSINESS ADMINISTRATION

ED = EDUCATION

ENGR = ENGINEERING

LAS = LIBERAL ARTS & SCIENCES

NUR = NURSING

SW = SOCIAL WORK

¹ In 1995, Architecture, Art, and Urban Planning changed to Architecture and the Arts. Urban Planning is now a part of Urban Policy and Public Affairs in the Graduate College.

² Kinesiology is now a part of Associated Health Professions. 1987 data for Kinesiology were added to Associated Health Professions to make an accurate comparison to 1997 data.

DATA SOURCE: 1997, Student Data Books: UIC

Table 7

**UIC FALL ENROLLMENT BY LEVEL AND RACE/ETHNICITY
FALL 1987 - FALL 1997**

RACE/ETHNICITY	1987	1988	1989	1990	1991	1992	1993	1994	1995	1996	1997
Undergraduate											
Am.Ind./Alaskan Nat.	56	39	45	48	47	51	53	54	52	48	50
Asian/Pac. Islander	2,145	2,309	2,491	2,688	2,695	2,842	2,998	3,054	3,026	3,172	3,421
Black	1,642	1,674	1,681	1,827	1,703	1,746	1,723	1,721	1,698	1,680	1,686
Hispanic	1,551	1,648	1,726	1,904	2,066	2,338	2,553	2,674	2,755	2,725	2,765
White	9,929	9,672	9,316	9,073	8,481	8,436	8,254	7,856	7,771	7,722	7,537
International	391	387	377	384	369	360	369	357	324	302	268
Not Reported	177	211	309	541	476	513	484	490	516	541	556
Subtotal	15,891	15,940	15,945	16,465	15,837	16,286	16,434	16,206	16,142	16,190	16,283
Graduate											
Am.Ind./Alaskan Nat.	7	9	10	16	19	20	20	21	21	16	16
Asian/Pac. Islander	297	287	317	294	330	372	400	441	448	431	466
Black	307	277	314	365	403	461	523	542	546	551	541
Hispanic	152	139	134	201	233	245	281	309	354	347	344
White	3,422	3,502	3,475	3,523	3,737	3,924	3,883	3,790	3,475	3,357	3,190
International	786	859	962	1,104	1,234	1,217	1,135	1,019	1,049	1,128	1,217
Not Reported	43	42	50	338	158	218	227	222	219	240	239
Subtotal	5,014	5,115	5,262	5,841	6,114	6,457	6,469	6,344	6,112	6,070	6,013
Prof./Resident											
Am.Ind./Alaskan Nat.	5	4	5	3	3	5	6	7	10	10	6
Asian/Pac. Islander	319	402	450	399	441	444	475	545	602	661	678
Black	209	197	203	182	177	191	207	223	215	191	192
Hispanic	238	244	240	172	157	163	156	172	163	180	187
White	2,192	2,133	2,020	1,403	1,432	1,427	1,367	1,308	1,269	1,196	1,135
International	45	52	70	16	19	21	31	27	35	39	46
Not Reported	0	0	0	30	28	22	25	33	41	46	38
Subtotal ¹	3,008	3,032	2,988	3,014	3,119	3,148	3,212	3,217	3,305	3,293	3,252
Campus Totals											
Am.Ind./Alaskan Nat.	68	52	60	67	69	76	79	82	83	74	72
Asian/Pac. Islander	2,761	2,998	3,258	3,381	3,466	3,658	3,873	4,040	4,076	4,264	4,565
Black	2,158	2,148	2,198	2,374	2,283	2,398	2,453	2,486	2,459	2,422	2,419
Hispanic	1,941	2,031	2,100	2,277	2,456	2,746	2,990	3,155	3,272	3,252	3,296
White	15,543	15,307	14,811	13,999	13,650	13,787	13,504	12,954	12,515	12,275	11,862
International	1,222	1,298	1,409	1,504	1,622	1,598	1,535	1,403	1,408	1,469	1,531
Not Reported	220	253	359	909	662	753	736	745	776	827	833
Total ¹	23,913	24,087	24,195	25,320	25,070	25,891	26,115	25,767	25,559	25,553	25,548

¹ Resident numbers are included in the Subtotal and Total, however, their race/ethnicity is not available. The numbers included in the totals are 809 in fall 1990, 862 in fall 1991, 875 in fall 1992, 945 in fall 1993, 902 in fall 1994, 970 in fall 1995 - 1997.

DATA RESOURCES: 1987-1988, 1997, Student Data Books: UIC

1989-1991, 1996, Data Resources and Institutional Analysis: UIC

1992-1993, Research Data Base: UOAPA

1994-1995, Enrollment Tables, Tables 3, 4, 5: Data Resources and Institutional Analysis: UIC

Table 8

**UIC FALL ENROLLMENT PERCENT DISTRIBUTION
BY RACE/ETHNICITY
FALL 1987 - FALL 1997**

RACE/ETHNICITY	1987	1988	1989	1990	1991	1992	1993	1994	1995	1996	1997
Undergraduate:											
Am.Ind./Alaskan Nat.	0.4	0.2	0.3	0.3	0.3	0.3	0.3	0.3	0.3	0.3	0.3
Asian/Pac.Islander	13.5	14.5	15.6	16.3	17.0	17.5	18.2	18.8	18.7	19.6	21.0
Black	10.3	10.5	10.5	11.1	10.8	10.7	10.5	10.6	10.5	10.4	10.4
Hispanic	9.8	10.3	10.8	11.6	13.0	14.4	15.5	16.5	17.1	16.8	17.0
White	62.5	60.7	58.4	55.1	53.6	51.8	50.2	48.5	48.1	47.7	46.3
International	2.5	2.4	2.4	2.3	2.3	2.2	2.2	2.2	2.0	1.9	1.6
Not Reported	1.1	1.3	1.9	3.3	3.0	3.1	2.9	3.0	3.2	3.3	3.4
Subtotal	100.0%	100.0%	100.0%	100.0%	100.0%	100.0%	100.0%	100.0%	100.0%	100.0%	100.0%
Graduate:											
Am.Ind./Alaskan Nat.	0.1	0.2	0.2	0.3	0.3	0.3	0.3	0.3	0.3	0.3	0.3
Asian/Pac.Islander	5.9	5.6	6.0	5.0	5.4	5.8	6.2	7.0	7.3	7.1	7.7
Black	6.1	5.4	6.0	6.2	6.6	7.1	8.1	8.5	8.9	9.1	9.0
Hispanic	3.0	2.7	2.5	3.4	3.8	3.8	4.3	4.9	5.8	5.7	5.7
White	68.2	68.5	66.0	60.3	61.1	60.8	60.0	59.7	56.9	55.3	53.1
International	15.7	16.8	18.3	18.9	20.2	18.8	17.5	16.1	17.2	18.6	20.2
Not Reported	0.9	0.8	1.0	5.8	1.8	3.4	3.5	3.5	3.6	4.0	4.0
Subtotal	100.0%	100.0%	100.0%	100.0%	100.0%	100.0%	100.0%	100.0%	100.0%	100.0%	100.0%
Prof./Resident:											
Am.Ind./Alaskan Nat.	0.2	0.1	0.2	0.1	0.1	0.2	0.3	0.3	0.4	0.4	0.3
Asian/Pac.Islander	10.6	13.3	15.1	18.1	19.5	19.5	21.0	23.5	25.8	28.5	29.7
Black	6.9	6.5	6.8	8.3	7.8	8.4	9.1	9.6	9.2	8.2	8.4
Hispanic	7.9	8.0	8.0	7.8	7.0	7.2	6.9	7.4	7.0	7.7	8.2
White	72.9	70.3	67.6	63.6	63.4	62.8	60.3	56.5	54.3	51.5	49.7
International	1.5	1.7	2.3	0.7	0.8	0.9	1.4	1.2	1.5	1.7	2.0
Not Reported	0.0	0.0	0.0	1.4	1.2	1.0	1.1	1.4	1.8	2.0	1.7
Subtotal'	100.0%	100.0%	100.0%	100.0%	100.0%	100.0%	100.0%	100.0%	100.0%	100.0%	100.0%
Campus Totals:											
Am.Ind./Alaskan Nat.	0.3	0.2	0.2	0.3	0.3	0.3	0.3	0.3	0.3	0.3	0.3
Asian/Pac.Islander	11.5	12.4	13.5	13.8	14.3	14.6	15.4	16.2	16.6	17.3	18.6
Black	9.0	8.9	9.1	9.7	9.4	9.6	9.7	10.0	10.0	9.9	9.8
Hispanic	8.1	8.4	8.7	9.3	10.1	11.0	11.9	12.7	13.3	13.2	13.4
White	65.0	63.5	61.2	57.1	56.4	55.1	53.7	52.1	50.9	49.9	48.3
International	5.1	5.4	5.8	6.1	6.7	6.4	6.1	5.6	5.7	6.0	6.2
Not Reported	0.9	1.1	1.5	3.7	2.7	3.0	2.9	3.0	3.2	3.4	3.4
Total'	100.0%	100.0%	100.0%	100.0%	100.0%	100.0%	100.0%	100.0%	100.0%	100.0%	100.0%

Note: Totals may not equal 100.0% due to rounding.

' Data on race/ethnicity for residents are not available for fall 1990 through fall 1997. These numbers are not included in the percent distribution for those years.

DATA SOURCES: 1987-1988, 1997, Student Data Book: UIC

1989-1991, Office of Planning and Resources Management: UIC

1992-1993, Research Data Base: UOAPA

1994-1996, Enrollment Tables, Tables 3, 4, 5: Data Resources and Institutional Analysis: UIC

UIC Minority Enrollment As a Percentage of Total Enrollment Fall 1987 - Fall 1997

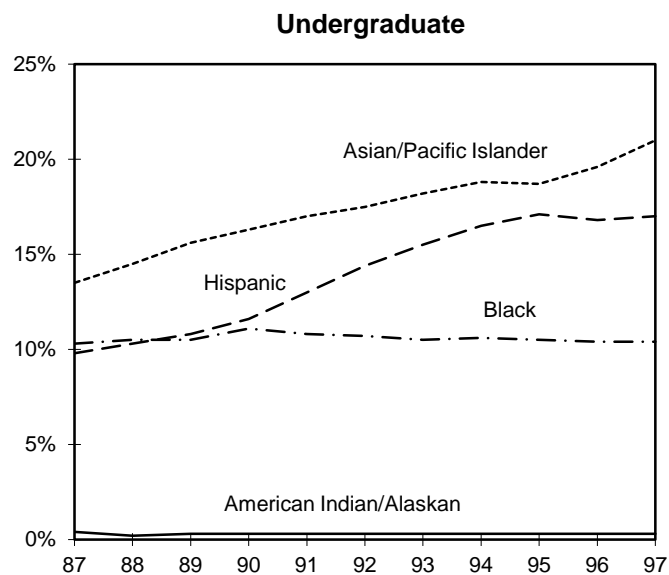


Figure 8

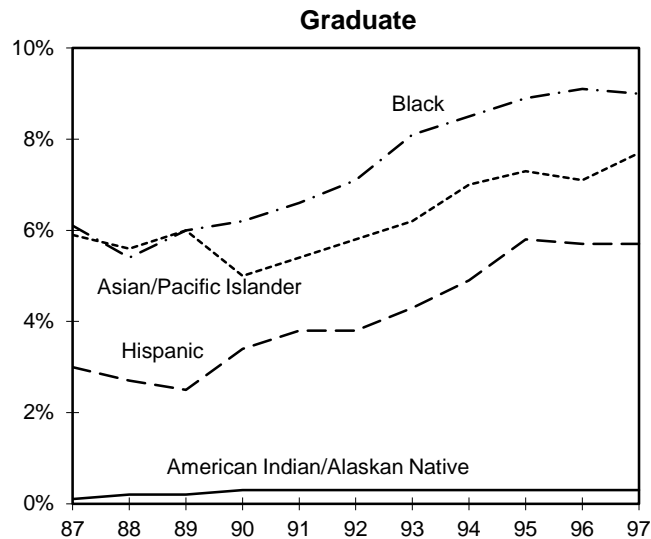


Figure 9

Note: In 1985, the President's Award Program (PAP) was established to ensure that capable underrepresented Black and Hispanic undergraduates, with outstanding academic records, could study at the University of Illinois. In fall 1991, the program was expanded to include American Indian/Alaskan Native students.

Chicago Campus

Enrollments

Page 12

¹ Other includes U.S. citizens using foreign addresses.

Table 9
GEOGRAPHICAL ORIGIN
OF 1,531 INTERNATIONAL STUDENTS
REPRESENTING 84 COUNTRIES
FALL 1997

Continent	Country	UG	G/PR	Total	Continent	Country	UG	G/PR	Total
North/Central America & W. Indies	Canada	14	31	45	Africa	Algeria	1	--	1
	Cayman Islands	1	--	1		Cameroon	--	1	1
	Costa Rica	--	4	4		Egypt	3	4	7
	El Salvador	--	2	2		Ethiopia	--	1	1
	Haiti	--	1	1		Ghana	1	1	2
	Mexico	2	10	12		Kenya	--	4	4
	Panama	--	1	1		Madagascar	3	1	4
South America	N. Antilles	--	1	1		Morocco	--	1	1
	Argentina	1	11	12		Niger	--	1	1
	Bolivia	--	1	1		Nigeria	1	6	7
	Brazil	1	9	10		South Africa	--	2	2
	Chile	--	7	7		Sudan	--	1	1
	Colombia	--	2	2		Tanzania	--	1	1
	Ecuador	1	--	1		Uganda	--	1	1
Europe	Peru	2	2	4		Zambia	1	--	1
	Uruguay	--	1	1	Far East Asia	Bangladesh	2	5	7
	Venezuela	1	3	4		Cambodia	--	1	1
	Austria	--	5	5		China, People's Rep.	8	3/4	382
	Cyprus	3	--	3		Hong Kong	19	10	29
	Czech Republic	--	6	6		India	15	216	231
	Denmark	--	1	1		Indonesia	2	4	6
	France	1	14	15		Japan	21	24	45
	Germany	9	11	20		Korea/North	--	/	/
	Greece	6	4	10		Korea/South	42	69	111
	Hungary	2	5	7		Malaysia	12	3	15
	Iceland	--	2	2		Nepal	1	3	4
	Italy	--	38	38		Pakistan	6	13	19
	Lithuania	--	5	5		Philippines	2	13	15
	Malta	--	1	1		Singapore	--	3	3
	Netherlands	--	2	2		Sri Lanka	--	8	8
	Norway	1	--	1		Taiwan	10	52	62
	Poland	5	7	12		Thailand	10	27	37
	Portugal	--	2	2	Near/Middle East Asia	Vietnam	--	2	2
	Romania	1	17	18		Iran	1	5	6
	Russian Fed.	4	36	40		Israel	5	9	14
	Spain	--	12	12		Jordan	6	8	14
	Sweden	4	1	5		Kuwait	--	2	2
	Switzerland	--	3	3		Lebanon	--	4	4
	Ukraine	--	1	1		Saudi Arabia	--	5	5
	United Kingdom	1	10	11		Syria	1	2	3
	Yugoslavia	3	30	33		Turkey	2	25	27
					Oceania	Australia	2	--	2
						New Zealand	--	2	2
Not Reported ¹							28	43	71
TOTAL							268	1,263	1,531

¹ Includes foreign students using U.S. addresses.

GEOGRAPHICAL DISTRIBUTION OF UIC STUDENT RESIDENCY

FALL 1997

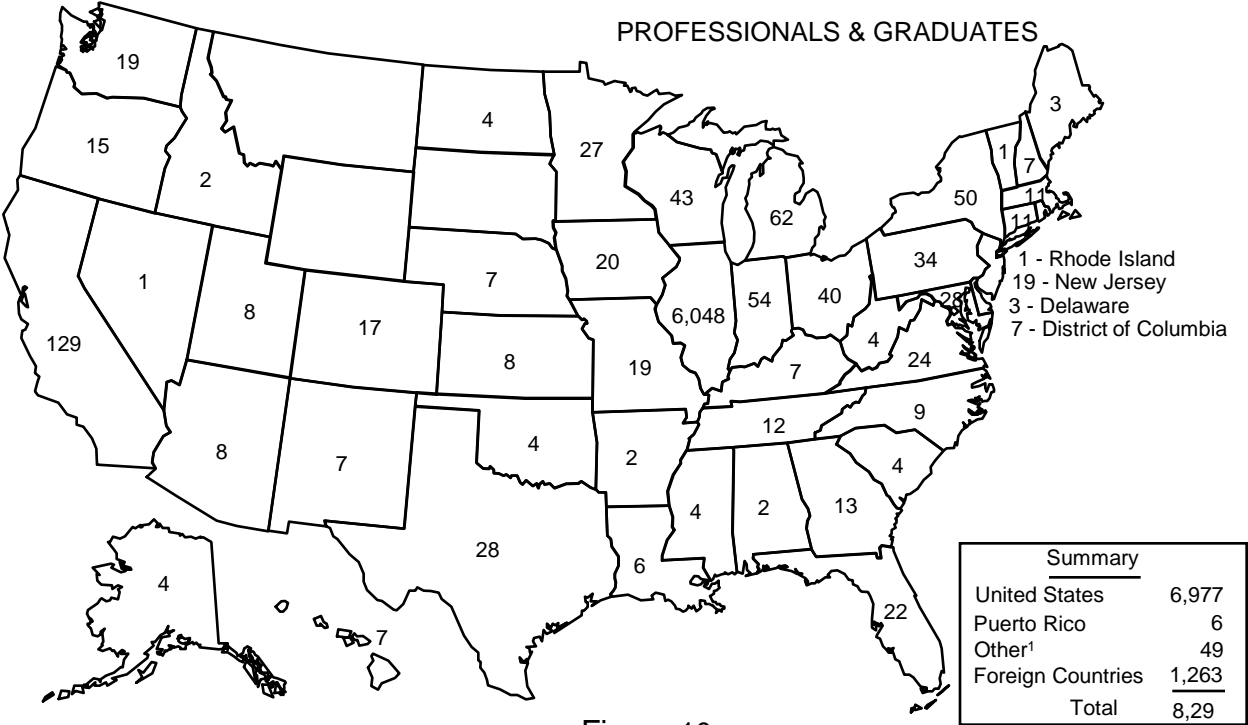
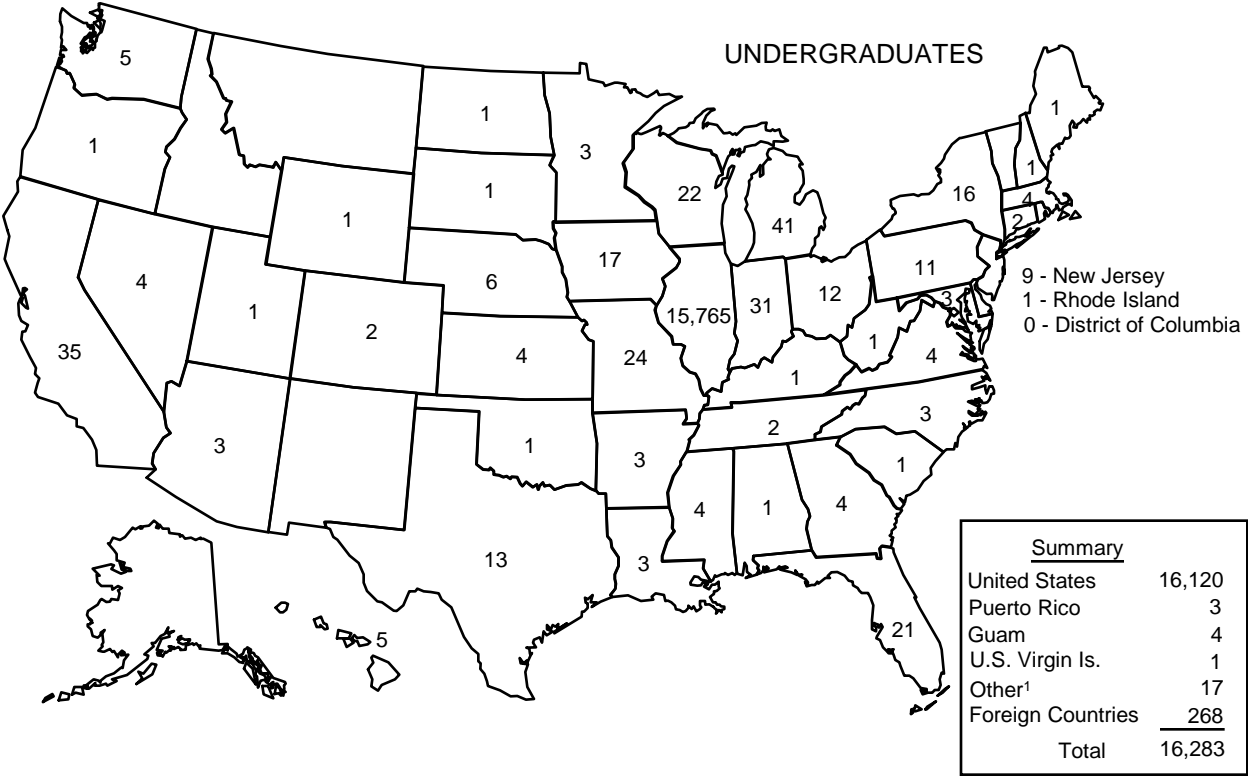


Figure 10

Table 10

**UIC BEGINNING FRESHMEN BY COLLEGE OF ENTRY
FALL 1987 - FALL 1997**

COLLEGE	1987	1988	1989	1990	1991	1992	1993	1994	1995	1996	1997
Architecture & Arts ¹	131	175	179	145	106	124	110	110	115	155	138
Business Admin.	277	275	285	340	291	218	224	213	259	264	305
Engineering	318	339	335	300	275	312	293	255	285	324	353
Assoc. Health Prof. ²	38	35	52	41	44	44	48	46	58	44	67
Lib. Arts & Sciences	1,518	1,785	1,701	1,716	1,797	1,999	2,035	1,905	1,755	1,917	1,955
Nursing ³	--	--	--	--	--	--	--	42	57	103	72
Total	2,282	2,609	2,552	2,542	2,513	2,697	2,710	2,571	2,529	2,807	2,890

Table 10.1

**CHANGE IN UIC BEGINNING FRESHMAN ENROLLMENT BY COLLEGE OF ENTRY
BETWEEN FALL 1987 AND FALL 1997**

COLLEGE	1987	1997	% Change
Architecture & Arts ¹	131	138	5.3
Business Admin.	277	305	10.1
Engineering	318	353	11.0
Assoc. Health Prof. ²	38	67	76.3
Lib. Arts & Sciences	1,518	1,955	28.8
Nursing	--	72	--
Total	2,282	2,890	26.6

¹ In 1995, Architecture, Art, and Urban Planning changed to Architecture and the Arts. Urban Planning is now a part of Urban Policy and Public Affairs in the Graduate College.

² As of Fall 1993, Kinesiology is part of the College of Associated Health Professions.

³ As of Fall 1994, Nursing accepts freshmen.

DATA SOURCES: 1987-1988, Final Enrollment Statistics: OAR
1989-1991, Data Resources & Institutional Analysis: UIC
1992-1997, Research Data Base: UOAPA

Table 11

**UIC NEW TRANSFERS BY COLLEGE OF ENTRY
FALL 1987 - FALL 1997**

COLLEGE	1987	1988	1989	1990	1991	1992	1993	1994	1995	1996	1997
Architecture & Arts ¹	138	130	133	161	171	137	144	131	127	96	102
Assoc. Health Prof. ²	--	--	--	117	118	141	189	184	145	119	113
Business Admin.	361	256	328	426	357	338	250	251	218	240	270
Education	4	6	3	1	7	8	17	11	11	13	9
Engineering	210	205	190	215	247	216	216	189	182	230	156
Kinesiology ²	44	55	46	48	55	43	--	--	--	--	--
Lib. Arts & Sciences	1,324	1,406	1,259	1,504	1,272	1,308	1,247	1,191	1,147	1,017	1,029
Nursing	--	--	--	80	83	67	78	110	103	83	55
Social Work	0	12	17	20	18	15	18	13	24	15	17
Subtotal	2,081	2,070	1,976	2,572	2,328	2,273	2,159	2,080	1,957	1,813	1,751
Health Center	322	360	336	--	--	--	--	--	--	--	--
Campus Total	2,403	2,430	2,312	2,572	2,328	2,273	2,159	2,080	1,957	1,813	1,751

Table 11.1

**CHANGE IN UIC NEW TRANSFER ENROLLMENT BY COLLEGE OF ENTRY
BETWEEN FALL 1987 AND FALL 1997**

COLLEGE	1987	1997	% Change
Architecture & Arts ¹	138	102	(26.1)
Business Admin.	361	270	(25.2)
Education	4	9	125.0
Engineering	210	156	(25.7)
Lib. Arts & Sciences	1,324	1,029	(22.3)
Social Work	0	17	N/A
Health Professions	366	168	
Campus Total	2,403	1,751	(27.1)

¹ In 1995, Architecture, Art, and Urban Planning changed to Architecture and the Arts. Urban Planning is now a part of Urban Policy and Public Affairs in the Graduate College.

² As of 1993, Kinesiology is a part of the College of Associated Health Professions. Prior to 1990, Health Center included Nursing and Associated Health Professions. In Table 11.1, all Associated Health Professions, Nursing, Kinesiology, and the Health Center are included under the heading Health Professions.

DATA SOURCES: 1987-1988, Final Enrollment Statistics: OAR
1989-1991, Data Resources & Institutional Analysis: UIC
1992-1997, Research Data Base: UOAPA

Table 12

**UIC BEGINNING FRESHMEN BY
HIGH SCHOOL PERCENTILE RANK DISTRIBUTION AND MEANS
FALL 1987 - FALL 1997**

QUARTILE ¹	1987	1988	1989	1990	1991	1992	1993	1994	1995	1996	1997
Upper Quartile	53.4	53.6	55.5	52.7	50.8	49.1	47.9	52.2	52.9	55.5	57.8
Second Quartile	34.2	34.7	34.4	34.4	34.6	35.9	36.7	35.9	35.6	35.6	34.1
Third Quartile	11.7	11.3	9.6	12.4	14.1	14.4	14.9	11.8	11.1	8.8	8.0
Fourth Quartile	0.7	0.4	0.5	0.4	0.5	0.6	0.6	0.2	0.5	0.2	0.2
Total	100.0%	100.0%	100.0%	100.0%	100.0%	100.0%	100.0%	100.0%	100.0%	100.0%	100.0%
Mean HSPR	74.2	73.8	74.4	73.8	72.8	72.2	72.3	73.0	74.4	74.8	75.8

**UIC Beginning Freshmen
Percent Distribution by HSPR Quartiles
Fall 1987 and Fall 1997**

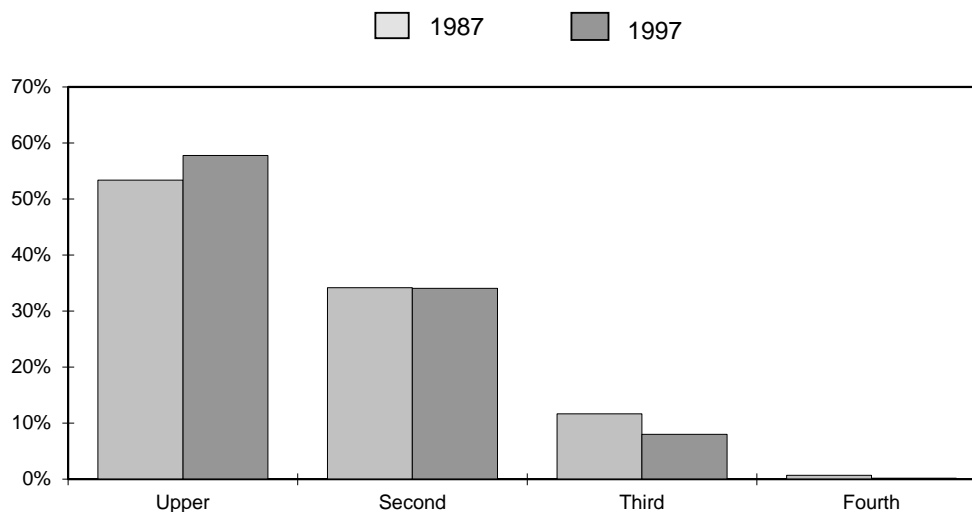


Figure 11

¹ Not Reported not included.

Note: Totals may not equal 100.0% due to rounding.

DATA SOURCES: 1987-1988, Freshman Class Profile: UIC
 1989, Research Data Base: UOSCR
 1990, ISIS.3, DB2 Extract: UOSCR
 1991, Data Resources & Institutional Analysis: UIC
 1992-1997, Research Data Base: UOAPA

Table 13

**UIC BEGINNING FRESHMEN BY
ACT COMPOSITE SCORE DISTRIBUTION AND GROUP MEAN
Fall 1987 - Fall 1990: ACT Assessment Test; Fall 1991 - Fall 1997: Enhanced ACT Assessment Test**

COMPOSITE SCORE	1987	1988	1989	1990 ¹	EACT 1991	EACT 1992	EACT 1993	EACT 1994	EACT 1995	EACT 1996	EACT 1997
Above 32	0.0	0.0	0.2	0.1	0.1	0.2	0.0	0.2	0.1	0.4	0.3
30 - 32	1.1	1.5	2.5	2.0	1.9	1.5	1.9	2.1	2.0	3.5	3.3
27 - 29	7.9	8.4	9.9	7.0	6.4	7.0	5.9	5.8	8.4	8.9	11.4
24 - 26	16.1	18.7	18.3	15.6	15.0	16.5	14.7	15.5	17.1	20.4	20.6
21 - 23	23.0	22.8	23.1	23.5	28.3	28.1	28.2	26.0	29.0	30.5	31.2
18 - 20	21.6	21.8	19.4	22.3	29.1	28.8	32.1	29.7	28.1	25.1	23.3
15 - 17	18.3	16.3	16.3	17.3	18.1	16.9	16.0	17.0	13.5	10.5	9.5
Below 15	11.9	10.4	10.3	12.3	1.3	1.0	1.2	3.7	1.8	0.7	0.4
TOTAL	100.0%	100.0%	100.0%	100.0%	100.0%	100.0%	100.0%	100.0%	100.0%	100.0%	100.0%
Mean ACT/C	20.2	20.6	20.8	20.2 ¹	20.9	21.1	20.9	20.9	21.4	22.1	22.5
Illinois Mean ACT/C	18.9	18.9	18.8	18.6 ¹	20.8	20.9	21.0	21.1	21.1	21.2	21.2

In October 1989, the American College Testing Program (ACT) introduced the Enhanced ACT Assessment. This test, usually taken by high school juniors and seniors, was similar but not identical to the previous assessment instrument. Because changes in the new test yielded differences in the scoring distribution, scores on the two tests are NOT interchangeable. ACT has published concordance tables which show scores on the former test to be equivalent to a higher score on the Enhanced Test. To convert the former score to an equivalent Enhanced Test score, the rule of thumb at the upper end is to add one (1) to the former test score and on the lower end to add anywhere from three to five points to the former score. Recent average scores for Illinois test takers are reported above in order to better compare the composite means.

¹ Both the U of I and Illinois 1990 test data include scores which were converted from Enhanced to original ACT scores.

Note: Totals may not equal 100.0% due to rounding.

DATA SOURCES: 1987-1988, Freshman Class Profile: UIC
 1989, Research Data Base: UOSCR
 1990, ISIS.3, DB2 Extract: UOSCR
 1991, Data Resources & Institutional Analysis: UIC
 1992-1997, Research Data Base: UOAPA

Table 14

SELECTED CHARACTERISTICS OF UIC FALL 1997 BEGINNING FRESHMEN

Fall Enrollment:	2,890
Gender:	Male: 44.6%
	Female: 55.4%
Age:	15 - 17: 3.5%
	18: 72.8%
	19 & over: 23.6%
Race/Ethnicity:	Am. Ind./Alaskan Nat.: 0.3%
	Black: 12.3%
	Asian/Pac. Islander: 25.8%
	Hispanic: 18.4%
	White: 39.2%
	International: 0.7%
	Unknown: 3.3%
Major High School Feeders:	Lane Tech: 174
	Whitney Young Magnet: 60
	Niles West: 59
	Bogan: 49
	Curie Metropolitan: 47
	Niles North: 45

Table 15

SELECTED CHARACTERISTICS OF UIC FALL 1997 NEW TRANSFER STUDENTS¹

TWO-YEAR COLLEGES		FOUR-YEAR COLLEGES	
		Fall Enrollment:	
1158		Number	579
65.7%		Percent of Total	33.3%
		Transfer GPA:	
81.8%		4.26 - 5.00	73.2%
11.6%		3.76 - 4.25	13.6%
0.1%		3.26 - 3.75	0.3%
6.6%		Below 3.26	12.8%
		Age as of 12/31/97:	
6.8%		Less than 20	7.3%
37.9%		20 - 21	47.8%
21.6%		22 - 23	22.6%
20.6%		24 - 29	19.0%
13.1%		30 and over	9.3%
0.0%		Not Reported	0.0%
		Gender:	
47.5%		Male	40.8%
52.5%		Female	59.2%
		Race/Ethnicity:	
0.3%		Am. Ind./Alaskan Nat.	0.3%
7.9%		Black	13.6%
17.8%		Asian/Pac. Islander	8.8%
13.8%		Hispanic	9.0%
54.7%		White	57.3%
1.9%		International	5.2%
3.7%		Not Reported	5.7%
		Class Level at Transfer:	
7.8%		Advanced Freshman	12.3%
49.4%		Sophomore	39.9%
34.2%		Junior	25.0%
8.2%		Senior	15.4%
0.4%		Second Bachelor	7.4%
		Major Feeder Institutions:	
DuPage	138	UIC	75
Oakton	100	Northeastern	33
Moraine Valley	90	Loyola	27
Truman	88	Northern	20
Harper	83	Columbia	20

¹ Unknown or not reported institutions are not included in the distribution unless indicated otherwise.

Table 16

SELECTED CHARACTERISTICS OF
UIC FALL 1997 NEW PROFESSIONAL AND GRADUATE STUDENTS

		<u>Graduate</u>	<u>Professional</u>
Fall Enrollment		1,746	487
Gender	Male	42.3%	48.7%
	Female	57.7%	51.3%
Age	Less than 22	4.8%	23.2%
	22 - 23	20.3%	42.9%
	24 - 29	43.1%	27.3%
	30 - 39	20.8%	6.2%
	40 & over	10.9%	0.4%
Race/Ethnicity	Am. Ind./Alaskan Nat.	0.2%	0.2%
	Black	9.9%	8.0%
	Asian/Pac. Islander	9.6%	32.6%
	Hispanic	6.2%	8.0%
	White	47.8%	49.3%
	International	21.6%	1.2%
	Unknown	4.6%	0.6%
Residency	Resident	67.8%	91.2%
	Non-Resident	32.2%	8.8%
Graduate Status	Full-Time	49.0%	100.0%
	Part-Time	51.0%	0.0%

**UIC First-Time Freshmen
By County of Origin
Fall 1997**

Total = 2,808

Figure 12

DATA SOURCE: 1997, Research Data Base: UOAPA

Chicago Campus

New Students

Page 24

**UIC Community College Transfers
First-Time Undergraduate Transfers
Fall 1997
Total = 1,067**

¹ Other includes U.S. citizens using foreign addresses.

GEOGRAPHICAL DISTRIBUTION OF UIC NEW STUDENT RESIDENCY

FALL 1997

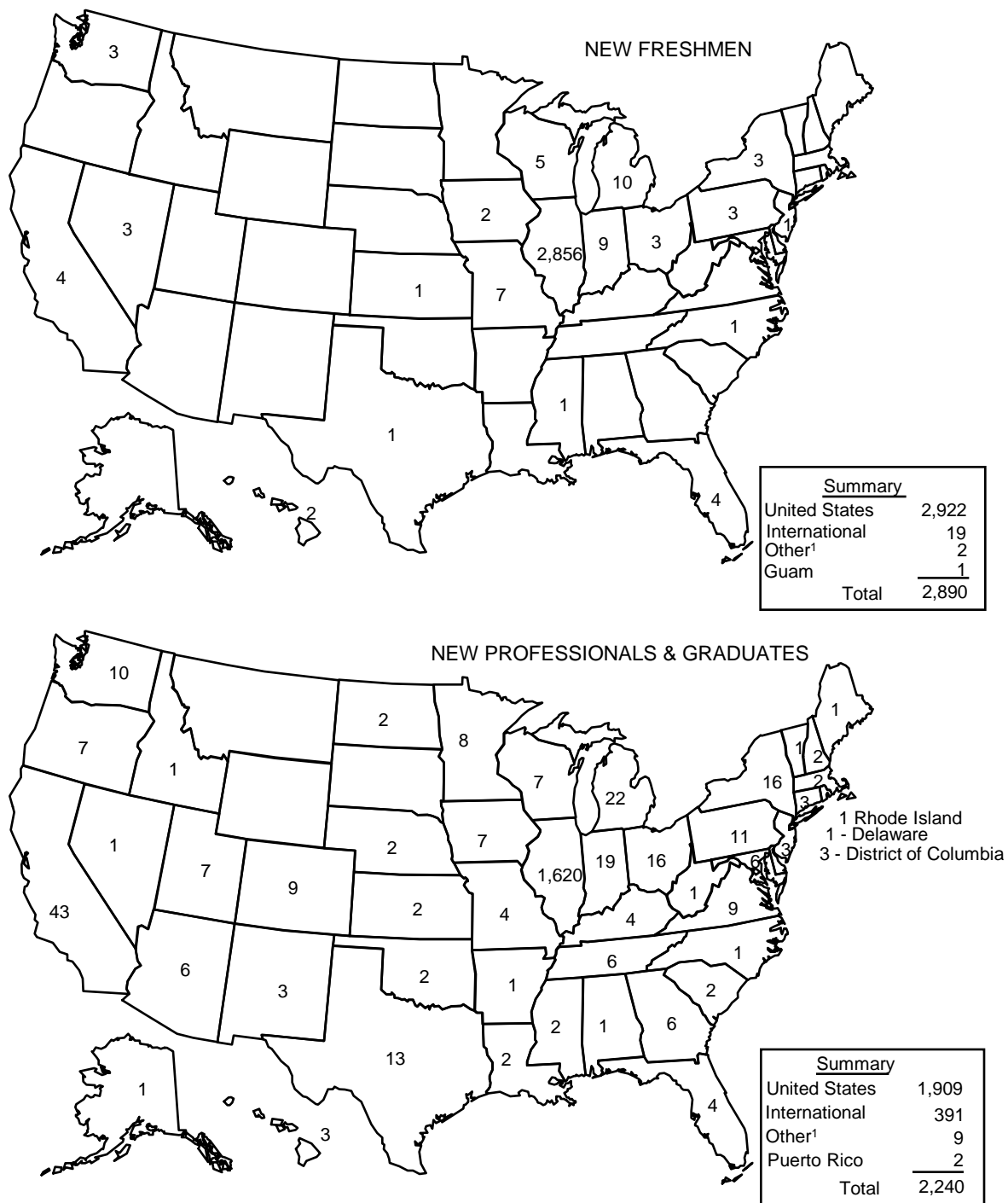


Figure 14

Table 17

**RETENTION PATTERNS FOR UIC BEGINNING FULL-TIME FRESHMEN
PERCENT GRADUATED OR ENROLLED BY YEARS SINCE MATRICULATION**

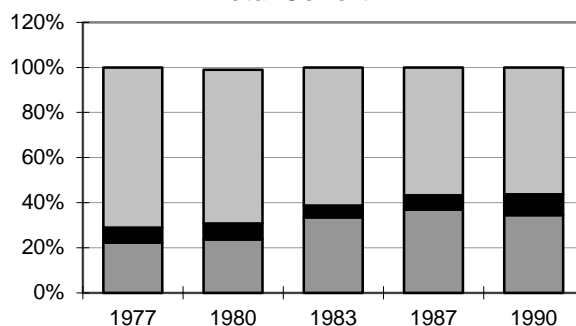
Fall Entering Term	Number in Cohort	Years After Matriculation						
		2	3	4	5	6	7	8
1985	2,397	69.3	54.6	37.8	20.2	10.3	4.0	2.1
1986	2,328	70.9	54.2	35.7	18.9	9.6	5.2	2.2
1987	2,282	71.0	56.5	39.7	20.7	10.0	4.6	2.5
1988	2,609	71.3	56.7	39.4	21.1	10.1	4.4	2.7
1989	2,552	73.2	59.1	43.8	22.5	9.8	4.4	2.6
1990	2,542	71.8	56.0	40.8	19.9	9.3	4.6	
1991	2,513	72.0	53.5	38.4	18.5	8.6		
1992	2,667	71.3	55.2	41.8	20.6			
1993	2,710	69.0	55.1	42.0				
1994	2,572	70.3	55.3					PERCENT ENROLLED
1995	2,533	73.5						
1985		0.0	0.2	8.4	22.9	31.7	35.6	36.8
1986		0.0	0.3	10.5	25.7	32.3	35.5	37.2
1987		0.0	0.1	12.1	28.0	36.0	39.7	41.2
1988		0.0	0.6	11.8	26.9	34.6	38.9	40.5
1989		0.0	0.6	11.1	28.4	37.8	41.3	42.4
1990		0.0	0.4	8.8	25.9	34.4	38.2	
1991		0.1	0.3	6.9	22.6	30.0		
1992		0.0	0.3	8.0	24.6			
1993		0.0	0.3	7.0				CUMULATIVE PERCENT GRADUATED
1994		0.0	0.2					
1995		0.0						
1985		69.3	54.8	46.2	43.1	42.0	39.6	38.9
1986		70.9	54.5	46.2	44.6	41.9	40.7	39.4
1987		71.0	56.6	51.8	48.7	46.0	44.3	43.7
1988		71.3	57.3	51.2	48.0	44.7	43.3	43.2
1989		73.2	59.7	54.9	50.9	47.6	45.7	45.0
1990		71.8	56.4	49.6	45.8	43.7	42.8	
1991		72.1	53.8	45.3	41.1	38.6		
1992		71.3	55.5	49.8	45.2			
1993		69.0	55.4	49.0				
1994		70.3	55.5					PERCENT RETENTION
1995		73.5						

Fall Beginning Freshmen include full-time freshmen entering in the summer preceding the fall term. Summer degrees are counted with the subsequent fall. Enrollment figures are given for the percentage enrolled through that year. The percentages in column "Year two," and so on, reflect the percentage of students enrolled during the second year, the percentage of degrees conferred through that year, and the retention for the second year -- the sum of enrolled and graduated students. These data might incur rounding error.

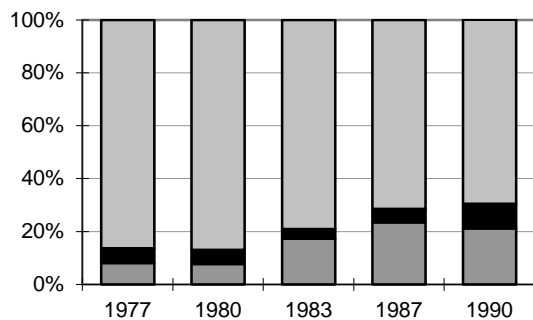
**Six-Year Graduation and Retention Rates
By Race/Ethnicity
Selected Freshman Cohorts, 1977-1990**

■ Graduated ■ Still Enrolled ■ Non-Persisters

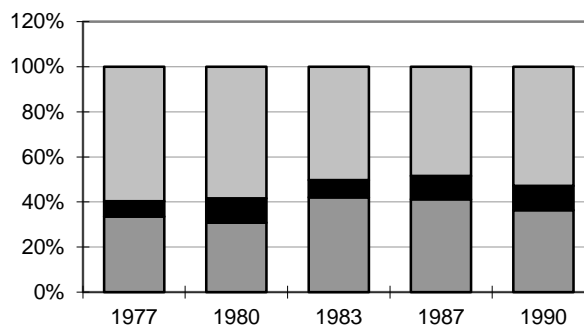
Total Cohort¹



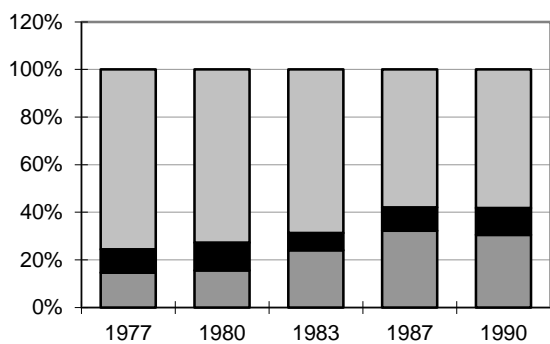
Blacks



Asians/Pacific Islanders



Hispanics



White

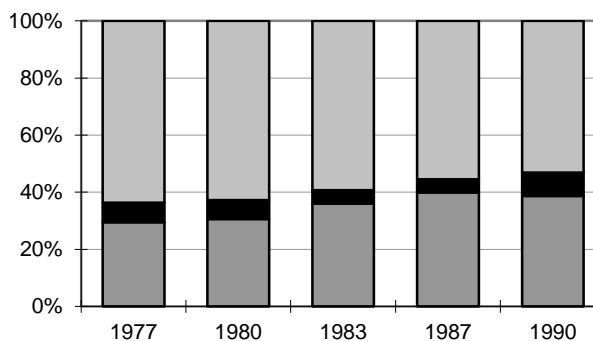


Figure 15

¹ Includes Native Americans, foreign students, and those with unknown race/ethnicity.
DATA SOURCE: 1996, Data Resources & Institutional Analysis: UIC

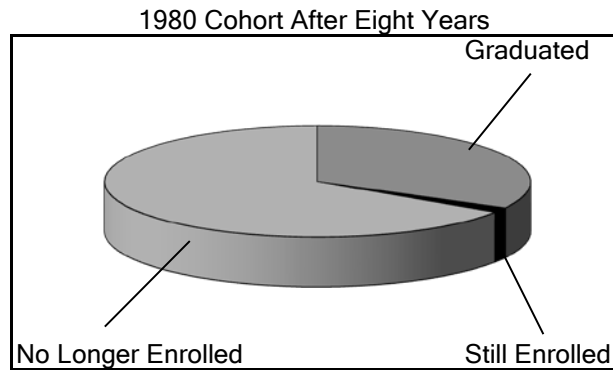
Table 18

RETENTION PATTERNS FOR UIC FIRST-TIME TRANSFERS
FOR 1980, 1985, AND 1992 COHORTS

1980 Cohort After Eight Years

Number in Cohort: 2,079

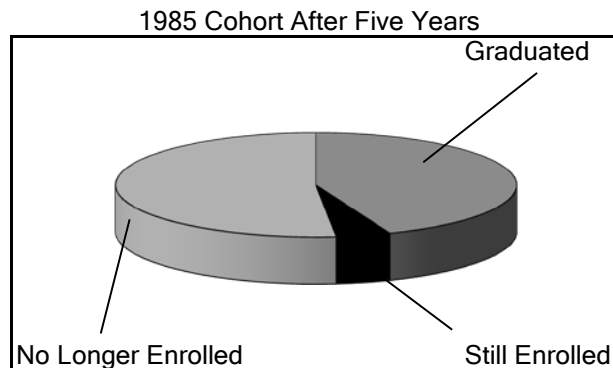
	<u>Number</u>	<u>Percentage</u>
Graduated	684	32.9%
Still Enrolled	31	1.5%
No Longer Enrolled	1,364	65.6%
Total	2,079	100.0%



1985 Cohort After Five Years

Number in Cohort: 2,550

	<u>Number</u>	<u>Percentage</u>
Graduated	1,122	44.0%
Still Enrolled	112	4.4%
No Longer Enrolled	1,316	51.6%
Total	2,550	100.0%



1992 Cohort After Five Years

Number in Cohort: 2,202

	<u>Number</u>	<u>Percentage</u>
Graduated	1,171	53.2%
Still Enrolled	70	3.2%
No Longer Enrolled	961	43.6%
Total	2,202	100.0%

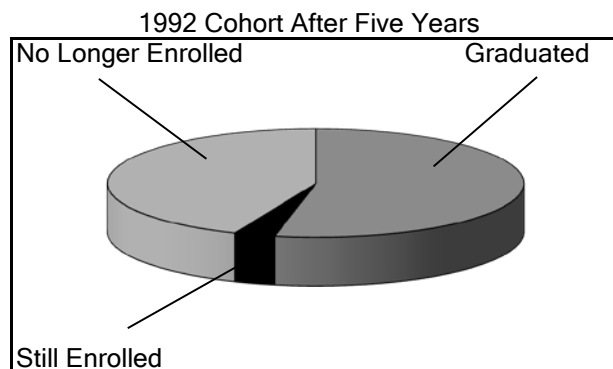


Figure 16

DATA SOURCES: 1980, Office of Planning and Resources Management
1985, UIC Student Data Book, 1993
1992, UIC Student Data Book, 1997

Table 19

**UIC RETENTION RATES FOR NEW TRANSFERS AFTER FIVE YEARS
BY CLASS LEVEL
FALL 1985 AND FALL 1991 COHORTS**

Five-Year Retention and Graduation Rates Fall 1985 & Fall 1991 New Degree-Seeking Transfers										
	Freshman		Sophomore		Junior		Senior		Total	
Retention	1985	1991	1985	1991	1985	1991	1985	1991	1985	1991
Graduated	23.2	35.3	41.5	49.3	55.1	60.2	44.9	57.7	44.0	50.5
Still Enrolled	8.8	5.8	4.0	4.2	3.5	2.4	2.5	0.8	4.4	3.6
Subtotal	32.0	41.1	45.5	53.5	58.6	62.6	47.4	58.5	48.4	54.1
No Longer Enrolled										
Good Standing	35.4	22.0	27.1	17.1	21.4	14.9	34.7	25.0	27.3	18.4
Poor Standing	32.2	35.8	23.1	28.7	17.7	21.7	15.0	15.4	21.6	26.6
Unknown Standing	0.5	1.1	4.3	0.7	2.3	0.8	2.9	1.1	2.8	0.9
Subtotal	68.1	58.9	54.5	46.5	41.4	37.4	52.6	41.5	51.7	45.9
TOTAL	100%	100%	100%	100%	100%	100%	100%	100%	100%	100%

Totals may not equal 100% due to rounding.

New Transfer Graduation and Retention Rates

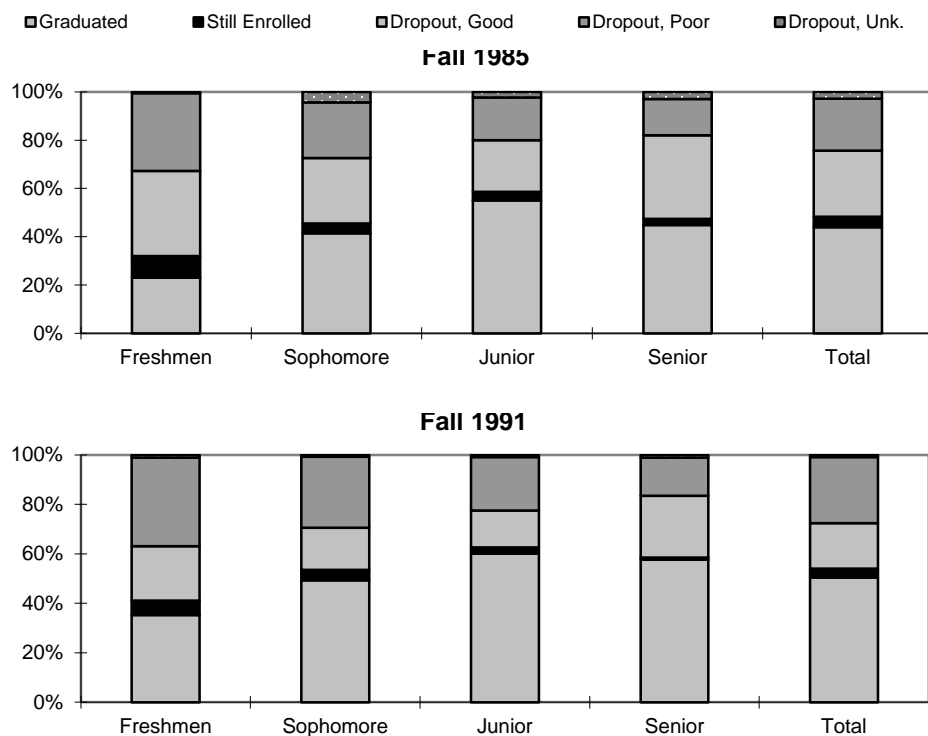


Figure 16.1

DATA SOURCE: 1993 and 1996 UIC Student Data Books

Table 20

**NUMBER OF UIC DEGREES CONFERRED BY LEVEL
FY 1987 - FY 1997**

DEGREE	1987	1988	1989	1990	1991	1992	1993	1994	1995	1996	1997
Bachelor's	2,799	2,670	2,698	2,618	2,891	2,651	2,533	2,805	3,003	2,788	2,769
Master's	1,167	1,149	1,211	1,136	1,299	1,379	1,356	1,451	1,519	1,428	1,488
Doctorate	167	148	161	182	200	202	247	235	246	241	242
Professional ¹	447	504	535	554	527	483	542	526	533	497	525
Campus Total	4,580	4,471	4,605	4,490	4,917	4,715	4,678	5,017	5,301	4,954	5,024

**Percent Change in UIC Degrees Conferred
by Level -- FY 1987 and FY 1997**

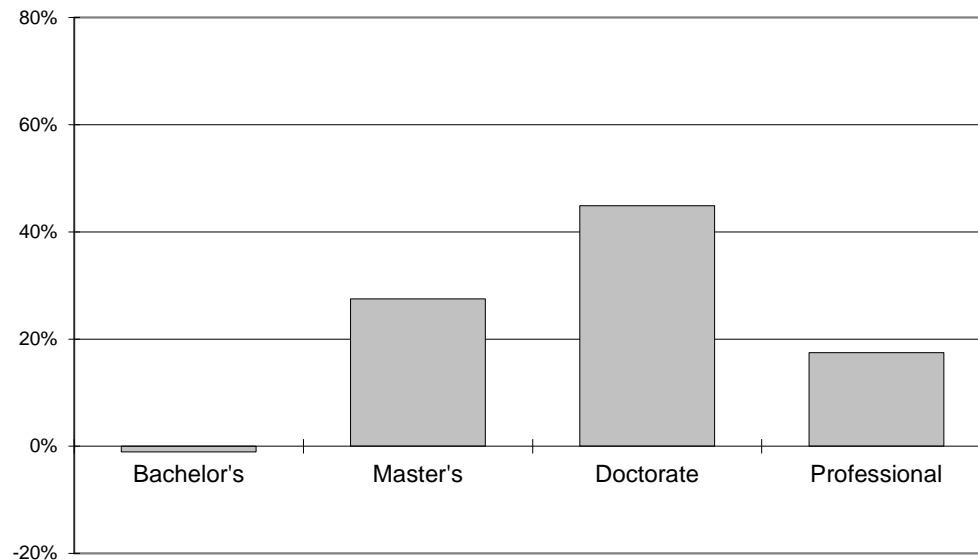


Figure 17

¹ Professional degrees include medicine, dentistry, pharmacy, and advanced certificates in dentistry.

DATA SOURCES: 1987-1989, Research Data Base, Degree File: UOSCR

1990-1991, Data Resources & Institutional Analysis: UIC

1992-1996, Research Data Base: UOAPA

1997, Student Data Book: UIC

Table 21

**NUMBER OF UIC UNDERGRADUATE DEGREES CONFERRED BY COLLEGE
FY 1987 - FY 1997**

COLLEGE	1987	1988	1989	1990	1991	1992	1993	1994	1995	1996	1997
Architecture & the Arts ¹	186	179	165	151	188	198	186	198	209	188	244
Assoc. Health Professions	153	158	167	161	174	112	117	232	264	258	253
Business Administration	593	555	547	545	585	606	567	630	618	500	508
Dentistry	62	65	65	39	53	43	39	35	62	43	27
Education ²	73	83	85	81	89	120	72	59	94	85	66
Engineering	439	389	411	378	360	322	337	303	359	355	315
Kinesiology	49	48	47	38	54	42	31	10	-- ⁴	-- ⁴	-- ⁴
Liberal Arts & Sciences	1,015	998	1,045	1,006	1,180	1,047	1,032	1,121	1,104	1,095	1,142
Nursing	182	165	137	188	172	124	119	170	249	219	167
Pharmacy ³	18	1	--	--	--	--	--	--	--	--	--
Social Work	29	29	29	31	36	37	33	47	44	45	47
Campus Total:	2,799	2,670	2,698	2,618	2,891	2,651	2,533	2,805	3,003	2,788	2,769

**Percent Change in UIC Undergraduate Degrees
Conferred by College
FY 1987 and FY 1997**

AA = ARCH./ART
AHP = ASSOC. HEALTH PROF.⁴
BA = BUSINESS ADMIN.
DENT = DENTISTRY
ED = EDUCATION
ENGR = ENGINEERING
LAS = LIBERAL ARTS & SCI.
NURS = NURSING
SW = SOCIAL WORK

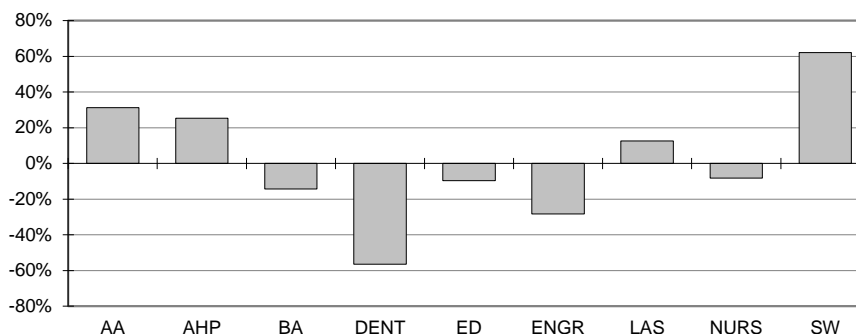


Figure 18

¹ In 1995, Architecture, Art, and Urban Planning changed to Architecture and the Arts. Urban Planning is now a part of Urban Policy and Public Affairs in the Graduate College.

² In order to meet changes in state requirements for teacher certification in 1992, students either accelerated studies or delayed graduation. This pattern affected the number of graduates for FY 1992 and FY 1993.

³ Pharmacy no longer confers B.S. in Pharmacy.

⁴ As of 1993, Kinesiology is a part of the College of Associated Health Professions. In Figure 18, 1987 data for Kinesiology was added to Associated Health Professions to make an accurate comparison to 1997 data.

DATA SOURCES: 1987-1988, 1997, Student Data Books: UIC

1989 IPEDS, Table Z: UIC

1990-1991, Data Resources & Institutional Analysis: UIC

1992-1996, Research Data Base: UOAPA

Table 22

**NUMBER AND PERCENT OF UIC DEGREES CONFERRED BY LEVEL BY GENDER
FY 1997**

LEVEL	MALE		FEMALE		TOTAL	
	Number	Percent	Number	Percent	Number	Percent
Bachelor's	1,284	46.4%	1,485	53.6%	2,769	100.0%
Master's	566	38.0%	922	62.0%	1,488	100.0%
Doctorate	119	49.2%	123	50.8%	242	100.0%
Professional ¹	287	54.7%	238	45.3%	525	100.0%
Campus Total	2,256	44.9%	2,768	55.1%	5,024	100.0%

**Percent of UIC Degrees Conferred
by Gender -- FY 1997**

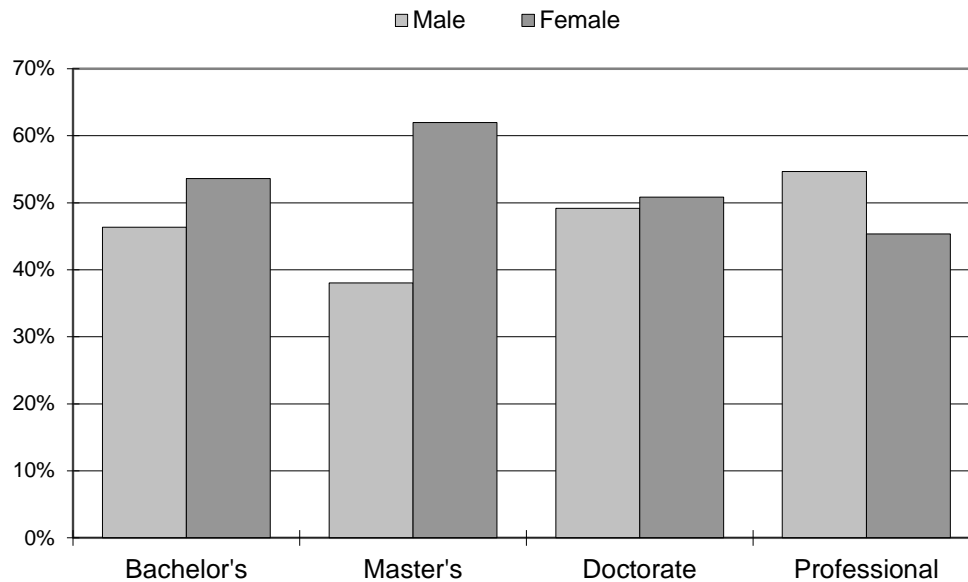


Figure 19

¹ Professional degrees include medicine, dentistry, pharmacy, and advanced certificates in dentistry.

Table 23**NUMBER OF UIC DEGREES CONFERRED BY RACE/ETHNICITY
FY 1997**

<u>LEVEL</u>	<u>Am. Ind./ Alask.Nat.</u>	<u>Asian/ Pac. Isl.</u>	<u>Black</u>	<u>Hispanic</u>	<u>White</u>	<u>Int'l</u>	<u>Unknown</u>	<u>Total</u>
Bachelor's	6	476	243	369	1,511	86	78	2,769
Master's	4	107	127	105	855	226	64	1,488
Doctorate	0	20	5	2	127	81	7	242
Professional ¹	5	127	44	29	305	9	6	525
Campus Total	15	730	419	505	2,798	402	155	5,024

Table 23.1**PERCENT OF UIC DEGREES CONFERRED BY RACE/ETHNICITY
FY 1997**

<u>LEVEL</u>	<u>Am. Ind./ Alask.Nat.</u>	<u>Asian/ Pac. Isl.</u>	<u>Black</u>	<u>Hispanic</u>	<u>White</u>	<u>Int'l</u>	<u>Unknown</u>	<u>Total</u>
Bachelor's	0.2%	17.2%	8.8%	13.3%	54.6%	3.1%	2.8%	100.0%
Master's	0.3%	7.2%	8.5%	7.1%	57.5%	15.2%	4.3%	100.0%
Doctorate	0.0%	8.3%	2.1%	0.8%	52.5%	33.5%	2.9%	100.0%
Professional ¹	1.0%	24.2%	8.4%	5.5%	58.1%	1.7%	1.1%	100.0%
Campus Total	0.3%	14.5%	8.3%	10.1%	55.7%	8.0%	3.1%	100.0%

¹ Professional degrees include medicine, dentistry, pharmacy, and advanced certificates in dentistry.

Note: Totals may not equal 100.0% due to rounding.

DATA SOURCE: 1997, Student Data Book: UIC

DATA BOOK 1997 GUIDE

UIC

Note: All wk1 files are now excel files with an .xls extension.

TABLE 1	CENRLEV.WK1
FIGURE 1	
TABLE 2 & 2.1	CUENRCAT.WK1
FIGURE 2	
TABLE 3	CUENRCOL.WK1
FIGURE 3	
TABLE 4	CGENRCOL.WK1
TABLE 5	CENRLEGE.WK1
FIGURE 4, 5, 6	
TABLE 6	CENRCLGE.WK1
FIGURE 7	CHARTP8
TABLE 7	CENRLERA.WK1
TABLE 8	CENR%ETH.WK1
FIGURE 8 & 9	CENR%CHT
FIGURE 10	CUSMUGR.DRW
TABLE 9	CGEOGINT. WK1
TABLE 10 & 10.1	CBEFRCOL.WK1
TABLE 11 & 11.1	CNETRCOL.WK1
TABLE 12	CBEFRHSP.WK1
FIGURE 11	
TABLE 13	CBEFRACT.WK1
TABLE 14	CBEFRCHA.WK1
TABLE 15	CTRCHARC.WK1
TABLE 16	CNEGRCHA.WK1
FIGURE 12	CILMAPBF.DRW
FIGURE 13	CCCTRNFR.DRW
FIGURE 14	CUSMBFG.DRW
TABLE 17	CBEFR%GE.WK1
FIGURE 15	CHARTP29.DRW
TABLE 18	CFTRGRPT.WK1
FIGURE 16	
TABLE 19	CTRANRET.WK1
FIGURE 16.1	
TABLE 20	CDECOLEV.WK1
FIGURE 17	
TABLE 21	CUDECOCL.WK1
FIGURE 18	
TABLE 22	CDECOGEN.WK1
FIGURE 19	
TABLE 23 & 23.1	CDECOETH.WK1
BLANK PAGES/ HEADERS	CP12, 14, 23, 24, 25, 26, 32, 38.