

---

# *University of Illinois Student Data Book*

---

*Fall Term 2003  
With a Ten-Year Overview*

*Prepared by the  
University Office for Planning and Budgeting*

*January 2004*

## UNIVERSITY OF ILLINOIS AT CHICAGO

### TABLE OF CONTENTS

CAMPUS ENROLLMENTS.....	Page
Highlights .....	1
By Level .....	2
Undergraduates by Admission Category .....	3
Undergraduates by College .....	4
Graduates by College .....	5
By Level and Gender .....	6
Undergraduates by College and Gender .....	7
By Level and Race/Ethnicity .....	9
Percent Distribution by Race/Ethnicity .....	10
Geographic Origin of International Students .....	13

### NEW STUDENT CHARACTERISTICS

Highlights .....	15
Beginning Freshmen by College of Entry .....	16
New Transfers by College of Entry .....	17
Beginning Freshmen by HSPR Distribution .....	18
Beginning Freshmen by ACT:C Scores .....	19
Beginning Freshman Characteristics .....	20
New Transfer Student Characteristics .....	21
New Professional/Graduate Student Characteristics .....	22

### ACADEMIC PERFORMANCE

Highlights .....	27
Retention Patterns for Beginning Freshmen .....	28
Retention Patterns of Select Transfer Cohorts .....	30
Retention by Class Level of Select Transfer Cohorts .....	31

### DEGREES CONFERRED

Highlights .....	33
By Level .....	34
Undergraduates by College .....	35
By Level and Gender .....	36
By Race/Ethnicity .....	37

### LIST OF FIGURES

CAMPUS ENROLLMENTS.....	Page
Trend by Level .....	2
Trend by New Student Category .....	3
Change by Undergraduate College .....	4
Undergraduate, Graduate, and Professional Trends by Gender .....	6
Undergraduate Distribution by College and Gender .....	8
Trends by Race/Ethnicity .....	11
Undergraduates by Geographic Origin .....	12
Professional/Graduate Students by Geographic Origin .....	12

### NEW STUDENT CHARACTERISTICS

Freshmen by HSPR Quartiles .....	18
Freshmen with ACT:C of 24 or higher .....	19
Freshmen by Illinois County of Origin .....	23
Transfers by Illinois Sending Community College .....	24
Freshmen by Geographic Origin .....	25
Professional/Graduate Students by Geographic Origin .....	25

### ACADEMIC PERFORMANCE

Freshmen Retention by Race/Ethnicity .....	29
Retention of Transfer Cohorts .....	30
Retention by Class of Transfer Cohorts .....	31

### DEGREES CONFERRED

Change by Level .....	34
Change in Bachelor's Degrees by College .....	35
By Level and Gender .....	36

## EXPLANATORY NOTES FOR RETENTION AND GRADUATION

---

*Graduation and retention rates are the result of many variables including academic performance, academic preparation, motivation, and academic integration. Other factors which seem to influence graduation and retention include part/full-time attendance, student age, family responsibilities, commuter/resident attendance, first-generation college attendance, socioeconomic status, employment, and indebtedness. The extent to which these factors combine and contribute to graduation and retention is not fully understood, but there is a considerable body of research documenting the complexities of the issue.*

*Throughout recent history the graduation rate of students in the United States who enter a university as beginning freshmen and work toward bachelor's degrees from that same university four to six years later is approximately 50 percent. A freshman class with higher than average ability, motivation, preparation, and greater full-time attendance, etc., will graduate at higher rates than that average. The reverse is also true.*

*However, there are no hard and fast prediction models. The intervening variables are numerous and interrelated. For example, high motivation certainly can overcome under-preparedness just as low motivation can negate high ability. Similarly, better academic preparation may be the result of high academic ability, or it may be the consequence of higher socioeconomic status, and thus a more positive high school environment.*

*It is tempting to compare institution-wide graduation rates among universities without accounting for the makeup of the student body. The reader is cautioned not to make blanket comparisons, for example, in the graduation and retention rates provided in this Data Book for the University of Illinois campuses. The student bodies of the campuses are different, and thus comparisons among the three would parallel the proverbial apples-to-oranges relationship.*

*One other caveat should be emphasized: Retention data presented in this and in previous Data Books were gathered from several different studies, each employing a slightly different methodology. The footnotes section of each table describes the definitions used for that table.*

---

# Campus Enrollments

## UIC

---

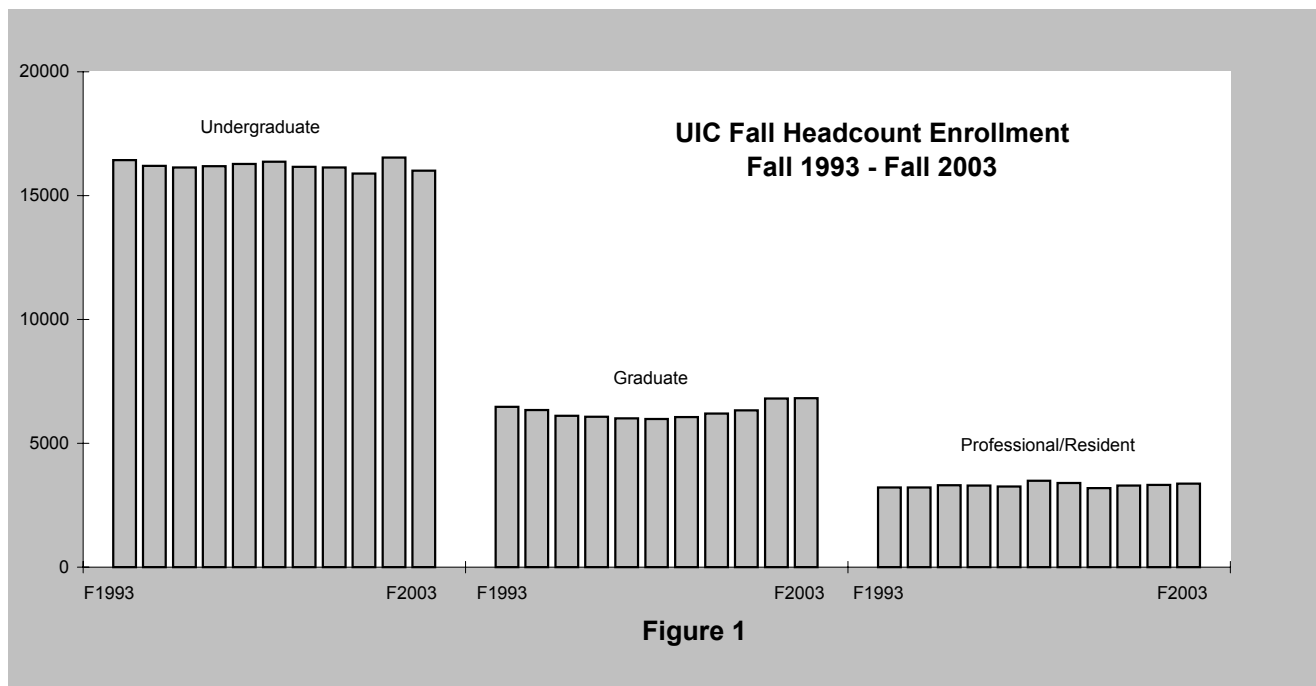
### **HIGHLIGHTS**

- *Fall 2003 total enrollment (including residents) on the Chicago campus numbered 26,210; this is down over 460 from last year's high point, but it is higher than all other recent years. See Table 1 and Figure 1.*
- *With 73 fewer students, beginning freshmen are down slightly from last year, but higher than most recent years. To compensate for the very large freshman class of 2002, the number of new transfers has dropped considerably, over 700 fewer than last year. Meanwhile, the number of continuing students has grown by about 350 since last year. Total undergraduate enrollment is down about 500 students from last year's decade-high point to 16,012. See Table 2 and Figure 2.*
- *Most colleges have had stable enrollments over the past ten years, but Education is up (16 percent) and Nursing and Applied Health Sciences are down (28 and 37 percent, respectively) compared to 1993. See Table 3 and Figure 3.*
- *Graduate I enrollment, generally master's students, is down slightly from last year's ten-year high; Graduate II enrollment, though, is 170 higher than last year for a new ten-year high. Graduate I enrollment is highest in the College of Business Administration (658 students), while Graduate II enrollment, doctoral students, is concentrated in the College of Liberal Arts and Sciences. See Table 4.*
- *Tables 5-6 and Figures 4-7 illustrate trends in enrollment by gender. For the tenth year, there are more female than male undergraduate and graduate students. At the professional level, females have outnumbered males since only 2001.*
- *As seen in Tables 7-8 and Figures 8-9 undergraduate Hispanic enrollment had been stable at about 17 percent of the total, but is down the last two years to just over 16 percent. Enrollment of Asian/Pacific Islander students has climbed steadily to nearly one-quarter of the undergraduates. The proportion of Black students has decreased slowly over the period, and this year was at 9.1 percent. At the graduate level, the proportion of Black and Asian students rose until the mid-nineties then dropped to previous levels, while the proportion of Hispanic students rose then leveled off in the last years.*
- *The maps in Figure 10 illustrate geographic residency. Over 95 percent of undergraduates are Illinois residents, while the graduate and professional cohorts are less concentrated in the State (70 percent). The geographic origin of international students is displayed in Table 9, with international students coming primarily from India and the People's Republic of China.*

**Table 1**

**UIC FALL ENROLLMENT BY LEVEL  
FALL 1993 - FALL 2003**

LEVEL	1993	1994	1995	1996	1997	1998	1999	2000	2001	2002	2003
Freshman	4,550	4,269	4,357	4,352	4,477	4,565	4,499	4,401	4,221	4,584	4,602
Sophomore	3,022	3,014	3,065	3,052	3,176	3,147	2,970	3,111	3,064	3,208	2,793
Junior	3,377	3,457	3,375	3,420	3,312	3,434	3,474	3,356	3,508	3,483	3,436
Senior	5,302	5,354	5,272	5,290	5,227	5,140	5,161	5,205	5,035	5,198	5,112
Other	183	112	73	76	91	88	56	58	59	70	69
Subtotal	16,434	16,206	16,142	16,190	16,283	16,374	16,160	16,131	15,887	16,543	16,012
Grad I	3,944	3,846	3,658	3,614	3,665	3,586	3,139	3,320	3,324	3,513	3,459
Grad II	1,855	1,883	1,835	1,841	1,735	1,798	2,321	2,312	2,425	2,718	2,769
Nondegree	670	615	619	615	613	595	604	567	584	572	597
Subtotal	6,469	6,344	6,112	6,070	6,013	5,979	6,064	6,199	6,333	6,803	6,825
Professional	2,267	2,315	2,335	2,323	2,282	2,299	2,205	2,211	2,310	2,344	2,391
<b>Campus Total</b>	<b>25,170</b>	<b>24,865</b>	<b>24,589</b>	<b>24,583</b>	<b>24,578</b>	<b>24,652</b>	<b>24,429</b>	<b>24,541</b>	<b>24,530</b>	<b>25,690</b>	<b>25,228</b>
Resident *	945	902	970	970	970	1,193	1,196	981	982	982	982
<b>Grand Total</b>	<b>26,115</b>	<b>25,767</b>	<b>25,559</b>	<b>25,553</b>	<b>25,548</b>	<b>25,845</b>	<b>25,625</b>	<b>25,522</b>	<b>25,512</b>	<b>26,672</b>	<b>26,210</b>



**Figure 1**

\* The number of residents is estimated for years 1995-2003.

**DATA SOURCES:**

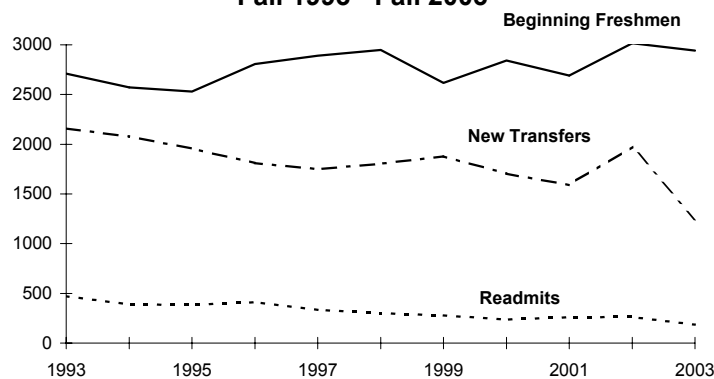
1993-1996, Research Data Base: UOAPA, Data Resources and Institutional Analysis: UIC  
 1997-1998 Data Resources and Institutional Analysis: UIC  
 1999-2003, ISIS Database

**Table 2****UIC FALL UNDERGRADUATE ENROLLMENT BY ADMISSION CATEGORY  
FALL 1993 - FALL 2003**

LEVEL	1993	1994	1995	1996	1997	1998	1999	2000	2001	2002	2003
Beginning Freshmen	2,710	2,571	2,529	2,807	2,890	2,947	2,616	2,843	2,692	3,015	2,942
New Transfers	2,159	2,080	1,957	1,813	1,751	1,806	1,881	1,705	1,589	1,973	1,245
Readmits <sup>1</sup>	472	389	387	413	334	302	279	238	261	265	186
Continuing Students	11,093	11,166	11,269	11,157	11,308	11,319	11,384	11,345	11,345	11,290	11,639
<b>Total</b>	<b>16,434</b>	<b>16,206</b>	<b>16,142</b>	<b>16,190</b>	<b>16,283</b>	<b>16,374</b>	<b>16,160</b>	<b>16,131</b>	<b>15,887</b>	<b>16,543</b>	<b>16,012</b>

**Table 2.1****A COMPARISON OF FALL 1993 AND FALL 2003 UNDERGRADUATE ENROLLMENT  
AS A PERCENTAGE OF TOTAL ENROLLMENT**

LEVEL	1993	2003	Change in % of Total
Beginning Freshmen	16.5%	18.4%	1.9
New Transfers	13.1%	7.8%	(5.4)
Readmits	2.9%	1.2%	(1.7)
Continuing Students	67.5%	72.7%	5.2
TOTAL	100.0%	100.0%	

**UIC New Student Enrollment  
Fall 1993 - Fall 2003****Figure 2**

<sup>1</sup> The number of readmits decreased in later years due to changes in processing and policy. In the past, students were required to apply for readmission if they were not enrolled during the previous term. Beginning Spring 1993, readmission is required only after "stopping out" two or more terms.

Note: Total may not equal 100.0% due to rounding.

DATA SOURCES:

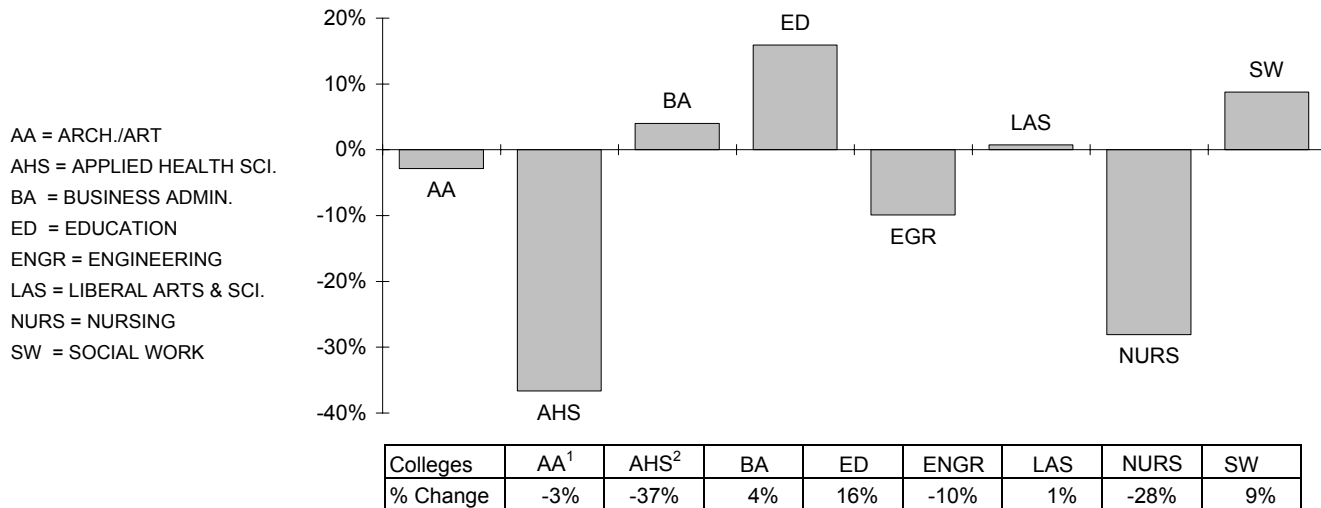
1993-1996, Research Data Base: UOAPA, Data Resources and Institutional Analysis: UIC  
 1997-1998 Data Resources and Institutional Analysis: UIC  
 1999-2003, ISIS Database

**Table 3**

**UIC UNDERGRADUATE ENROLLMENT BY COLLEGE  
FALL 1993 - FALL 2003**

COLLEGE	1993	1994	1995	1996	1997	1998	1999	2000	2001	2002	2,003
Architecture & Arts <sup>1</sup>	1,118	1,101	1,161	1,206	1,124	1,133	1,167	1,184	1,148	1,161	1,086
Applied Health Sci. <sup>2</sup>	742	763	749	689	687	730	696	617	478	415	470
Business Admin.	2,398	2,346	2,304	2,250	2,430	2,603	2,604	2,427	2,368	2,611	2,494
Education	157	182	165	196	215	208	194	172	144	139	182
Engineering	1,979	1,885	1,892	1,967	2,018	1,983	1,892	1,934	1,962	1,846	1,783
Liberal Arts & Sci.	9,515	9,224	9,129	9,104	9,085	9,072	9,032	9,230	9,270	9,879	9,586
Nursing	434	615	641	679	639	571	503	480	416	387	312
Social Work	91	90	101	99	85	74	72	87	101	105	99
<b>Campus Total</b>	<b>16,434</b>	<b>16,206</b>	<b>16,142</b>	<b>16,190</b>	<b>16,283</b>	<b>16,374</b>	<b>16,160</b>	<b>16,131</b>	<b>15,887</b>	<b>16,543</b>	<b>16,012</b>

**Percent Change in UIC Undergraduate Enrollment by College  
Fall 1993 - Fall 2003**



**Figure 3**

<sup>1</sup> In 1995, Architecture, Art, and Urban Planning changed to Architecture and the Arts. Urban Planning is now a part of Urban Policy and Public Affairs in the Graduate College.

<sup>2</sup> Effective fall 2001, the College of Health and Human Development Sciences was changed to the College of Applied Health Sciences.

**Table 4**  
**UIC GRADUATE ENROLLMENT BY COLLEGE**  
**FALL 1995 - FALL 2003**

COLLEGE	LEVEL	1995	1996	1997	1998	1999	2000	2001	2002	2003
Architecture & the Arts <sup>1</sup>	GI	202	197	220	223	213	233	250	222	161
	GII	6	4	2	--	--	5	7	10	8
	Unassigned	4	2	5	1	1	3	2	3	2
Applied Health Sci. <sup>2</sup>	GI	147	148	145	161	168	177	177	199	209
	GII	--	--	19	15	26	31	35	43	47
	Unassigned	4	16	12	22	19	18	12	10	8
Business Administration	GI	484	544	557	471	485	527	587	711	658
	GII	83	86	85	83	78	82	96	94	94
	Unassigned	46	41	24	20	28	11	14	1	8
Dentistry	GI	5	2	7	5	9	7	8	10	12
	GII	--	2	--	--	--	--	--	--	--
	Unassigned	--	--	--	--	--	--	--	--	--
Education	GI	418	427	425	433	408	453	397	513	587
	GII	208	230	221	218	210	182	189	206	216
	Unassigned	14	11	13	6	2	7	9	8	8
Engineering	GI	415	444	493	619	594	646	665	711	544
	GII	282	284	271	218	216	235	260	313	398
	Unassigned	21	23	24	19	18	15	22	17	12
Graduate	GI	--	--	--	--	--	--	--	--	--
	GII	2	--	--	--	--	--	--	--	--
	Unassigned	314	351	330	346	374	346	340	367	353
Liberal Arts & Sciences	GI	622	569	505	449	451	422	424	410	433
	GII	607	597	602	713	724	736	785	811	843
	Unassigned	34	20	28	27	23	23	26	22	36
Medicine	GI	66	58	73	54	47	56	53	45	45
	GII	143	135	131	165	159	160	177	170	178
	Unassigned	3	4	3	5	3	1	--	--	6
Nursing	GI	384	343	307	279	280	279	245	293	287
	GII	107	95	89	86	75	67	64	72	76
	Unassigned	97	72	80	59	42	36	24	32	49
Pharmacy	GI	46	61	55	31	32	37	36	39	32
	GII	66	63	68	85	94	108	113	120	127
	Unassigned	4	4	5	2	--	3	2	--	2
Public Health	GI	261	227	227	247	272	303	278	281	314
	GII	154	160	163	141	157	141	162	177	203
	Unassigned	43	47	47	55	51	66	87	63	64
Social Work	GI	505	489	503	457	513	478	455	453	430
	GII	91	90	35	35	34	39	38	39	33
	Unassigned	19	14	31	23	24	24	31	36	22
Urban Plan. & Public Affairs	GI	103	105	148	157	175	190	208	246	248
	GII	86	95	49	39	40	38	39	43	45
	Unassigned	16	10	11	10	19	14	16	13	27
<b>Total</b>	GI	3,658	3,614	3,665	3,586	3,647	3,808	3,783	4,133	3,960
	GII	1,835	1,841	1,735	1,798	1,813	1,824	1,965	2,098	2,268
	Unassigned	619	615	613	595	604	567	585	572	597
		<b>6,112</b>	<b>6,070</b>	<b>6,013</b>	<b>5,979</b>	<b>6,064</b>	<b>6,199</b>	<b>6,333</b>	<b>6,803</b>	<b>6,825</b>

<sup>1</sup> In 1995, Architecture, Arts, and Urban Planning changed to Architecture and the Arts. Urban Planning is now a part of Urban Planning and Public Affairs in the Graduate College.

<sup>2</sup> Effective fall 2001, the College of Health and Human Development Sciences was changed to the College of Applied Health Sciences.

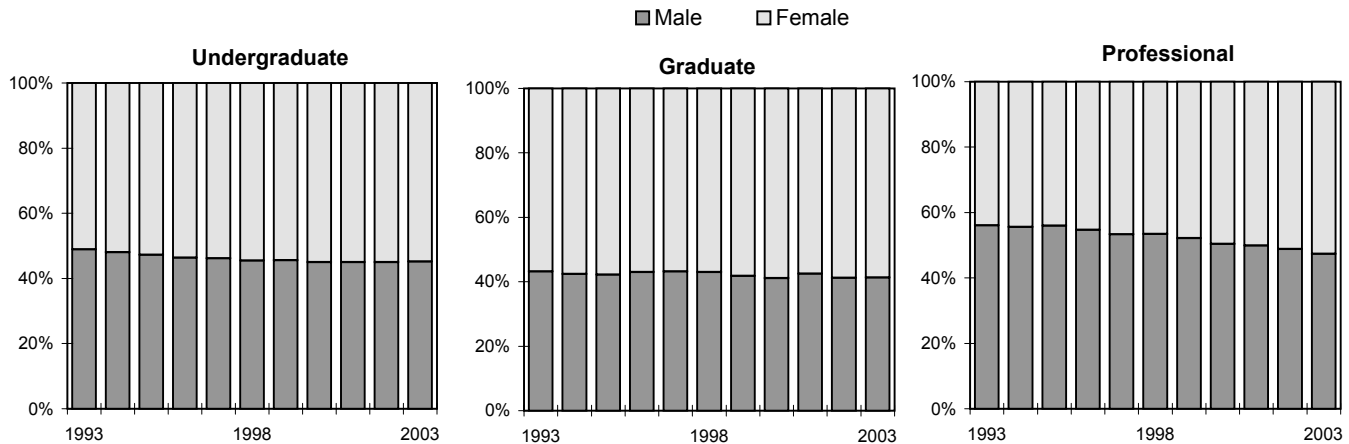


**Table 5**

**UIC FALL ENROLLMENT BY LEVEL AND GENDER  
FALL 1993 - FALL 2003**

LEVEL	1993	1994	1995	1996	1997	1998	1999	2000	2001	2002	2003
<b>Undergraduate</b>											
Male	8,035	7,784	7,626	7,513	7,517	7,446	7,358	7,262	7,154	7,450	7,242
Female	8,399	8,422	8,516	8,677	8,766	8,928	8,802	8,869	8,733	9,093	8,770
Subtotal	16,434	16,206	16,142	16,190	16,283	16,374	16,160	16,131	15,887	16,543	16,012
<b>Graduate</b>											
Male	2,794	2,690	2,579	2,611	2,596	2,571	2,538	2,551	2,689	2,804	2,821
Female	3,675	3,654	3,533	3,459	3,417	3,408	3,526	3,648	3,644	3,999	4,004
Subtotal	6,469	6,344	6,112	6,070	6,013	5,979	6,064	6,199	6,333	6,803	6,825
<b>Professional</b>											
Male	1,272	1,286	1,308	1,270	1,216	1,229	1,149	1,114	1,153	1,145	1,132
Female	995	1,029	1,027	1,053	1,066	1,070	1,056	1,097	1,157	1,199	1,259
Subtotal	2,267	2,315	2,335	2,323	2,282	2,299	2,205	2,211	2,310	2,344	2,391
<b>Campus Total</b>											
Male	12,101	11,760	11,513	11,394	11,329	11,246	11,045	10,927	10,996	11,399	11,195
Female	13,069	13,105	13,076	13,189	13,249	13,406	13,384	13,614	13,534	14,291	14,033
Total	25,170	24,865	24,589	24,583	24,578	24,652	24,429	24,541	24,530	25,690	25,228

**UIC Enrollment Distribution by Gender  
Fall 1993 - Fall 2003**



**Figure 4**

**Figure 5**

**Figure 6**

DATA SOURCES: 1993-1994, Research Data Base: UOAPA  
 1995-1996, Data Resources and Institutional Analysis: UIC  
 1997-1998, Student Data Books: UIC  
 1999-2003, ISIS Database

Table 6

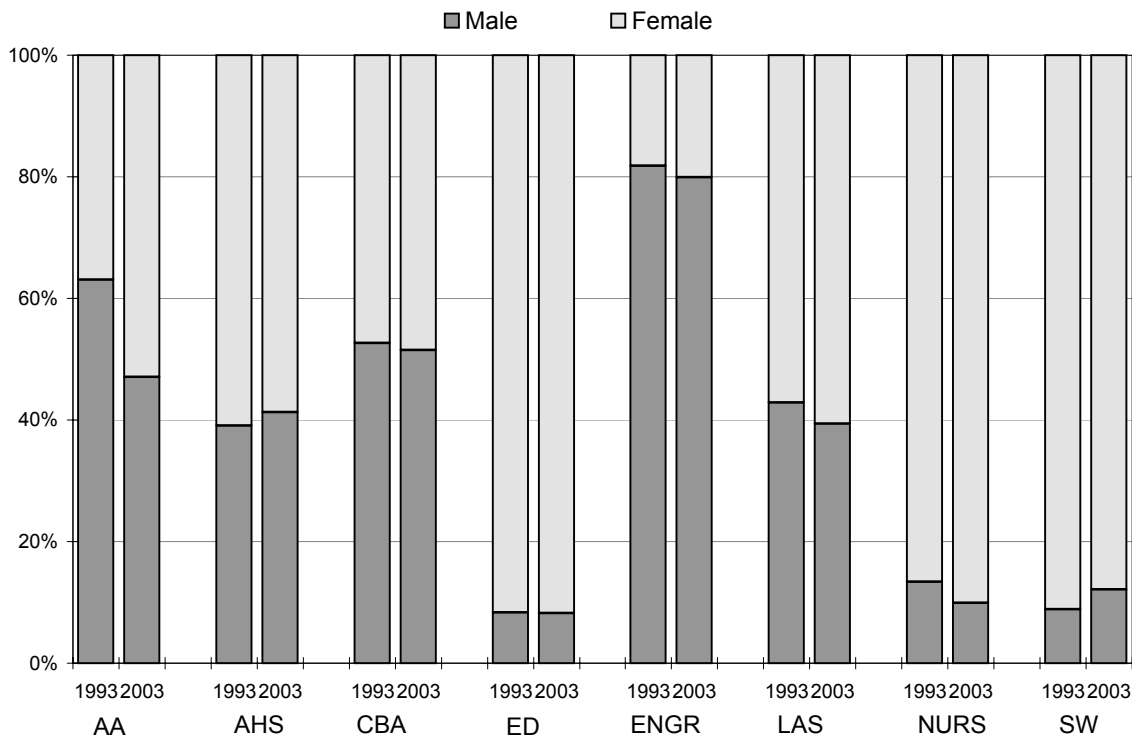
**UIC UNDERGRADUATE ENROLLMENT BY COLLEGE AND GENDER  
FALL 1993 - FALL 2003**

COLLEGE		1993	1994	1995	1996	1997	1998	1999	2000	2001	2002	2003
Architecture & the Arts <sup>1</sup>	Male	705	700	724	723	612	607	594	587	576	541	511
	Female	413	401	437	481	512	526	573	597	572	620	575
	Subtotal	1,118	1,101	1,161	1,204	1,124	1,133	1,167	1,184	1,148	1,161	1,086
Applied Health Sci. <sup>2</sup>	Male	290	303	286	263	285	289	283	250	206	174	194
	Female	452	460	463	428	402	441	413	367	272	241	276
	Subtotal	742	763	749	691	687	730	696	617	478	415	470
Business Administration	Male	1,261	1,246	1,207	1,156	1,252	1,275	1,236	1,150	1,148	1,306	1,285
	Female	1,137	1,100	1,097	1,096	1,178	1,328	1,368	1,277	1,220	1,305	1,209
	Subtotal	2,398	2,346	2,304	2,252	2,430	2,603	2,604	2,427	2,368	2,611	2,494
Education	Male	13	18	21	26	30	24	20	18	13	12	15
	Female	144	164	144	170	185	184	174	154	131	127	167
	Subtotal	157	182	165	196	215	208	194	172	144	139	182
Engineering	Male	1,619	1,519	1,521	1,595	1,638	1,597	1,520	1,521	1,548	1,477	1,425
	Female	360	366	371	371	380	386	372	413	414	369	358
	Subtotal	1,979	1,885	1,892	1,966	2,018	1,983	1,892	1,934	1,962	1,846	1,783
Liberal Arts & Sciences	Male	4,081	3,912	3,774	3,669	3,631	3,602	3,658	3,686	3,621	3,899	3,769
	Female	5,434	5,312	5,355	5,432	5,454	5,470	5,374	5,544	5,649	5,980	5,817
	Subtotal	9,515	9,224	9,129	9,101	9,085	9,072	9,032	9,230	9,270	9,879	9,586
Nursing	Male	58	77	79	71	59	43	36	39	34	29	31
	Female	376	538	562	610	580	528	467	441	382	358	281
	Subtotal	434	615	641	681	639	571	503	480	416	387	312
Social Work	Male	8	9	10	10	10	9	10	11	8	12	12
	Female	83	81	91	89	75	65	62	76	93	93	87
	Subtotal	91	90	101	99	85	74	72	87	101	105	99
CAMPUS	Male	8,035	7,784	7,622	7,513	7,517	7,446	7,357	7,262	7,154	7,450	7,242
	Female	8,399	8,422	8,520	8,677	8,766	8,928	8,803	8,869	8,733	9,093	8,770
	TOTAL	16,434	16,206	16,142	16,190	16,283	16,374	16,160	16,131	15,887	16,543	16,012

<sup>1</sup> In 1995, Architecture, Art, and Urban Planning changed to Architecture and the Arts. Urban Planning is now part of Urban Planning and Public Affairs in the Graduate College.

<sup>2</sup> Effective Fall 2001, the College of Health and Human Development Sciences was changed to the College of Applied Health Sciences.

## Percent Distribution of Undergraduate Enrollment by College and Gender 1993 and 2003



**Figure 7**

AA = ARCHITECTURE & ART<sup>1</sup>  
 AHS = APPLIED HEALTH SCIENCES<sup>2</sup>  
 CBA = COMMERCE & BUSINESS ADMINISTRATION  
 ED = EDUCATION  
 ENGR = ENGINEERING  
 LAS = LIBERAL ARTS & SCIENCES  
 NUR = NURSING  
 SW = SOCIAL WORK

<sup>1</sup> In 1995, Architecture, Art, and Urban Planning changed to Architecture and the Arts. Urban Planning is now a part of Urban Planning and Public Affairs in the Graduate College.

<sup>2</sup> Effective Fall 2001, the College of Health and Human Development Sciences was changed to the College of Applied Health Sciences.

DATA SOURCES: 1993, Research Data Base: UOAPA; 2003 ISIS Database

Table 7

**UIC FALL ENROLLMENT BY LEVEL AND RACE/ETHNICITY  
FALL 1993 - FALL 2003**

RACE/ETHNICITY	1993	1994	1995	1996	1997	1998	1999	2000	2001	2002	2003
<b>Undergraduate</b>											
Am.Ind./Alaskan Nat.	53	54	52	48	50	41	40	42	43	37	33
Asian/Pac. Islander	2,998	3,054	3,026	3,172	3,421	3,637	3,634	3,707	3,731	3,979	3,933
Black	1,723	1,721	1,698	1,680	1,686	1,694	1,587	1,552	1,514	1,578	1,455
Hispanic	2,553	2,674	2,755	2,725	2,765	2,776	2,782	2,765	2,695	2,677	2,576
White	8,254	7,856	7,771	7,722	7,537	7,398	7,257	7,179	7,036	7,380	7,044
International	369	357	324	302	268	254	260	289	295	250	211
Not Reported	484	490	516	541	556	574	600	597	573	642	760
Subtotal	16,434	16,206	16,142	16,190	16,283	16,374	16,160	16,131	15,887	16,543	16,012
<b>Graduate</b>											
Am.Ind./Alaskan Nat.	20	21	21	16	16	17	19	12	11	14	17
Asian/Pac. Islander	400	441	448	431	466	449	423	405	410	488	508
Black	523	542	546	551	541	496	510	526	518	572	564
Hispanic	281	309	354	347	344	335	360	411	434	457	458
White	3,883	3,790	3,475	3,357	3,190	3,111	3,137	3,061	3,086	3,214	3,303
International	1,135	1,019	1,049	1,128	1,217	1,329	1,406	1,559	1,648	1,791	1,667
Not Reported	227	222	219	240	239	242	209	225	226	267	308
Subtotal	6,469	6,344	6,112	6,070	6,013	5,979	6,064	6,199	6,333	6,803	6,825
<b>Professional</b>											
Am.Ind./Alaskan Nat.	6	7	10	10	6	10	10	9	10	9	6
Asian/Pac. Islander	475	545	602	661	678	702	706	688	753	771	797
Black	207	223	215	191	192	192	175	172	170	160	159
Hispanic	156	172	163	180	187	190	191	179	187	173	173
White	1,367	1,308	1,269	1,196	1,135	1,129	1,046	1,092	1,113	1,141	1,152
International	31	27	35	39	46	41	33	31	30	35	35
Not Reported	25	33	41	46	38	35	44	40	47	55	69
Subtotal	2,267	2,315	2,335	2,323	2,282	2,299	2,205	2,211	2,310	2,344	2,391
<b>Campus Totals</b>											
Am.Ind./Alaskan Nat.	79	82	83	74	72	68	69	63	64	60	56
Asian/Pac. Islander	3,873	4,040	4,076	4,264	4,565	4,788	4,763	4,800	4,894	5,238	5,238
Black	2,453	2,486	2,459	2,422	2,419	2,382	2,272	2,250	2,202	2,310	2,178
Hispanic	2,990	3,155	3,272	3,252	3,296	3,301	3,333	3,355	3,316	3,307	3,207
White	13,504	12,954	12,515	12,275	11,862	11,638	11,440	11,332	11,235	11,735	11,499
International	1,535	1,403	1,408	1,469	1,531	1,624	1,699	1,879	1,973	2,076	1,913
Not Reported	736	745	776	827	833	851	853	862	846	964	1,137
Total	25,170	24,865	24,589	24,583	24,578	24,652	24,429	24,541	24,530	25,690	25,228

DATA RESOURCES: 1993, Research Data Base: UOAPA

1994-1995, Enrollment Tables, Tables 3, 4, 5: Data Resources and Institutional Analysis: UIC

1996, Data Resources and Institutional Analysis: UIC

1997-1998, Student Data Books: UIC

1999-2003, ISIS Database

Table 8

**UIC FALL ENROLLMENT PERCENT DISTRIBUTION  
BY RACE/ETHNICITY  
FALL 1993 - FALL 2003**

RACE/ETHNICITY	1993	1994	1995	1996	1997	1998	1999	2000	2001	2002	2003
<b>Undergraduate</b>											
Am.Ind./Alaskan Nat.	0.3	0.3	0.3	0.3	0.3	0.3	0.2	0.3	0.3	0.2	0.2
Asian/Pac.Islander	18.2	18.8	18.7	19.6	21.0	22.2	22.5	23.0	23.5	24.1	24.6
Black	10.5	10.6	10.5	10.4	10.4	10.3	9.8	9.6	9.5	9.5	9.1
Hispanic	15.5	16.5	17.1	16.8	17.0	17.0	17.2	17.1	17.0	16.2	16.1
White	50.2	48.5	48.1	47.7	46.3	45.2	44.9	44.5	44.3	44.6	44.0
International	2.2	2.2	2.0	1.9	1.6	1.6	1.6	1.8	1.9	1.5	1.3
Not Reported	2.9	3.0	3.2	3.3	3.4	3.5	3.7	3.7	3.6	3.9	4.7
Subtotal	100.0%	100.0%	100.0%	100.0%	100.0%	100.0%	100.0%	100.0%	100.0%	100.0%	100.0%
<b>Graduate</b>											
Am.Ind./Alaskan Nat.	0.3	0.3	0.3	0.3	0.3	0.3	0.3	0.2	0.2	0.2	0.2
Asian/Pac.Islander	6.2	7.0	7.3	7.1	7.7	7.5	7.0	6.5	6.5	7.2	7.4
Black	8.1	8.5	8.9	9.1	9.0	8.3	8.4	8.5	8.2	8.4	8.3
Hispanic	4.3	4.9	5.8	5.7	5.7	5.6	5.9	6.6	6.9	6.7	6.7
White	60.0	59.7	56.9	55.3	53.1	52.0	51.7	49.4	48.7	47.2	48.4
International	17.5	16.1	17.2	18.6	20.2	22.2	23.2	25.1	26.0	26.3	24.4
Not Reported	3.5	3.5	3.6	4.0	4.0	4.0	3.4	3.6	3.6	3.9	4.5
Subtotal	100.0%	100.0%	100.0%	100.0%	100.0%	100.0%	100.0%	100.0%	100.0%	100.0%	100.0%
<b>Professional</b>											
Am.Ind./Alaskan Nat.	0.3	0.3	0.4	0.4	0.3	0.4	0.5	0.4	0.4	0.4	0.3
Asian/Pac.Islander	21.0	23.5	25.8	28.5	29.7	30.5	32.0	31.1	32.6	32.9	33.3
Black	9.1	9.6	9.2	8.2	8.4	8.4	7.9	7.8	7.4	6.8	6.6
Hispanic	6.9	7.4	7.0	7.7	8.2	8.3	8.7	8.1	8.1	7.4	7.2
White	60.3	56.5	54.3	51.5	49.7	49.1	47.4	49.4	48.2	48.7	48.2
International	1.4	1.2	1.5	1.7	2.0	1.8	1.5	1.4	1.3	1.5	1.5
Not Reported	1.1	1.4	1.8	2.0	1.7	1.5	2.0	1.8	2.0	2.3	2.9
Subtotal	100.0%	100.0%	100.0%	100.0%	100.0%	100.0%	100.0%	100.0%	100.0%	100.0%	100.0%
<b>Campus Total</b>											
Am.Ind./Alaskan Nat.	0.3	0.3	0.3	0.3	0.3	0.3	0.3	0.3	0.3	0.2	0.2
Asian/Pac.Islander	15.4	16.2	16.6	17.3	18.6	19.4	19.5	19.6	20.0	20.4	20.8
Black	9.7	10.0	10.0	9.9	9.8	9.7	9.3	9.2	9.0	9.0	8.6
Hispanic	11.9	12.7	13.3	13.2	13.4	13.4	13.6	13.7	13.5	12.9	12.7
White	53.7	52.1	50.9	49.9	48.3	47.2	46.8	46.2	45.8	45.7	45.6
International	6.1	5.6	5.7	6.0	6.2	6.6	7.0	7.7	8.0	8.1	7.6
Not Reported	2.9	3.0	3.2	3.4	3.4	3.5	3.5	3.5	3.4	3.8	4.5
Total	100.0%	100.0%	100.0%	100.0%	100.0%	100.0%	100.0%	100.0%	100.0%	100.0%	100.0%

Note: Totals may not equal 100.0% due to rounding.

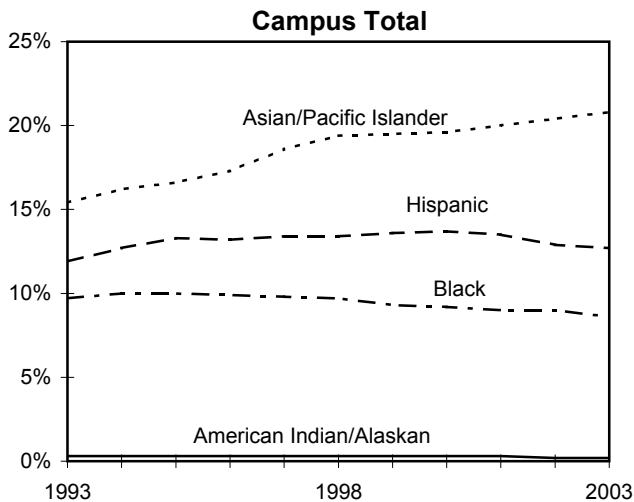
DATA SOURCES: 1993, Research Data Base: UOAPA

1997-1998, Student Data Book: UIC

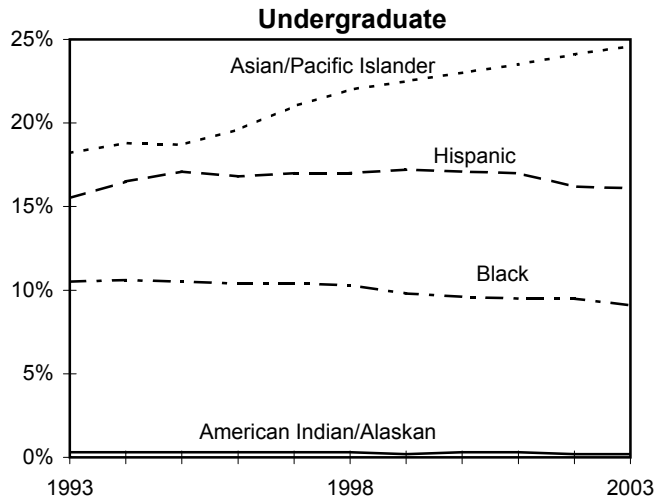
1994-1996, Enrollment Tables, Tables 3, 4, 5: Data Resources and Institutional Analysis: UIC

1999-2003, ISIS Database

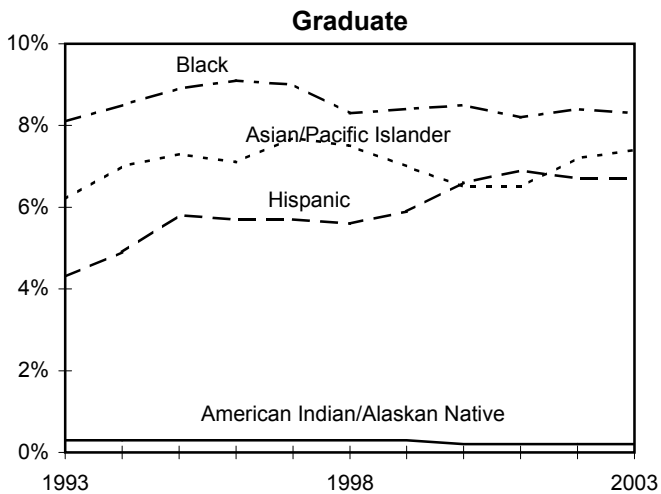
**UIC Minority Enrollment As a Percentage of Total Enrollment  
Fall 1993 - Fall 2003**



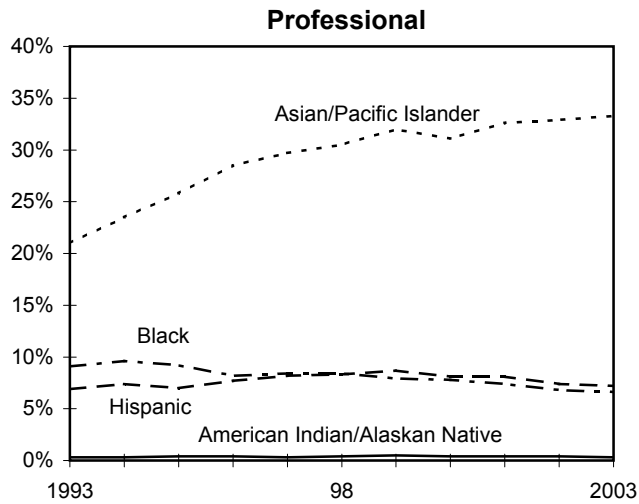
**Figure 8**



**Figure 8.1**



**Figure 9**



**Figure 9.1**

GEOGRAPHICAL DISTRIBUTION OF UIC STUDENT RESIDENCY

FALL 2003

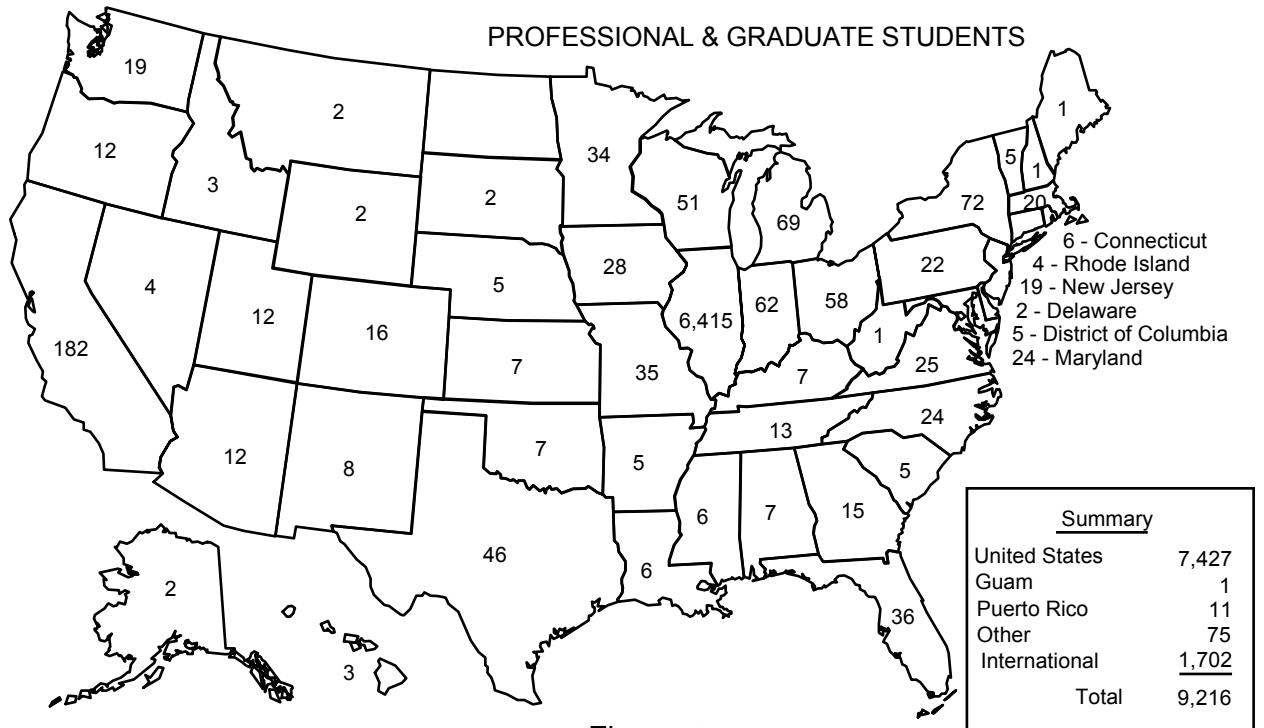
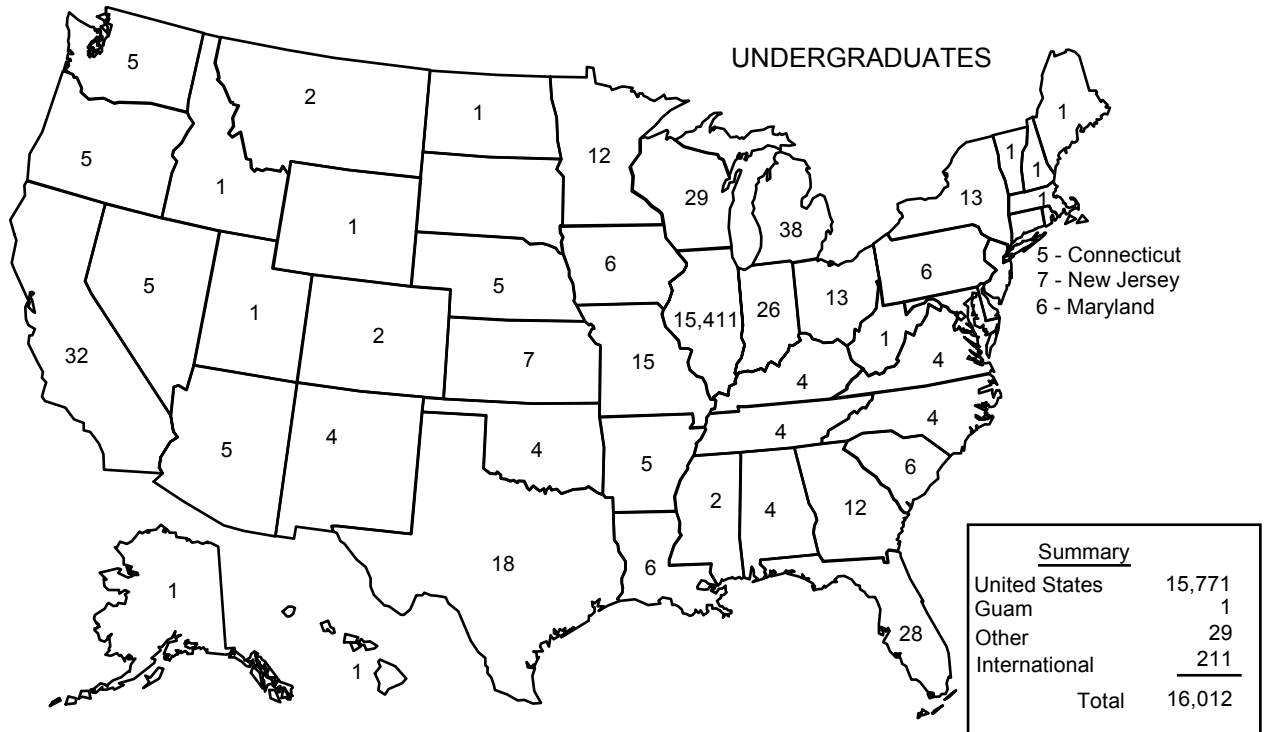


Figure 10

"Other" includes U.S. residents using foreign addresses. U.S. total includes unknown and not reported.

DATA SOURCE: 2003, ISIS Database

**Table 9  
GEOGRAPHICAL ORIGIN OF INTERNATIONAL STUDENTS  
FALL 2003**

Continent	Country	UG	G/PR	Total	Continent	Country	UG	G/PR	Total	
North/Central America & W. Indies	Bahamas	1	1	2	Europe (cont.)	United Kingdom	2	5	7	
	Canada	7	35	42		Former USSR	1	9	10	
	Cayman Islands	--	--	0		Yugoslavia	4	25	29	
	South America	Costa Rica	--	1	1	Africa	Algeria	--	1	1
		El Salvador	--	1	1		Cameroon	--	1	1
		Guatemala	--	1	1	Comoros	--	1	1	
		Haiti	1	--	1	Cote d'Ivoire	2	--	2	
		Jamaica	--	1	1	Egypt	--	7	7	
		Mexico	9	8	17	Eritrea	--	3	3	
		Nicaragua	--	1	1	Ethiopia	1	--	1	
		Trinidad & Tabago	--	1	1	Ghana	1	3	4	
		Argentina	--	8	8	Kenya	1	1	2	
		Bolivia	--	1	1	Malawi	--	4	4	
Brazil		1	11	12	Morocco	1	--	1		
Chile		--	4	4	Nigeria	1	3	4		
Colombia		1	12	13	Senegal	--	1	1		
Ecuador	1	--	1	South Africa	--	3	3			
Peru	1	4	5	Zambia	--	1	1			
Uruguay	--	1	1	Asia	Bangladesh	--	2	2		
Venezuela	--	1	1		Brunei	--	1	1		
Europe	Albania	2	1		3	China, People's Rep.	11	383	394	
	Andorra	1	--		1	Hong Kong	4	5	9	
	Armenia	--	2		2	India	12	393	405	
	Austria	--	2		2	Indonesia	4	6	10	
	Bosnia-Herzegovina	--	2		2	Iran	--	4	4	
	Bulgaria	3	4		7	Israel	5	3	8	
	Croatia	--	3		3	Japan	6	20	26	
	Cyprus	1	1		2	Jordan	--	5	5	
	Czech Republic	--	1		1	Korea/South	22	66	88	
	Denmark	--	1		1	Kuwait	--	6	6	
	Estonia	1	--		1	Laos	--	1	1	
	France	2	9		11	Lebanon	--	2	2	
	Germany	3	9		12	Malaysia	--	3	3	
	Greece	6	4		10	Myanmar	--	1	1	
	Hungary	--	2		2	Nepal	--	4	4	
	Ireland	--	1	1	Pakistan	4	14	18		
	Italy	--	32	32	Philippines	1	5	6		
	Latvia	1	--	1	Qatar	1	--	1		
	Lithuania	2	6	8	Saudi Arabia	1	6	7		
Macedonia	--	1	1	Singapore	--	6	6			
Netherlands	--	1	1	Sri Lanka	--	18	18			
Norway	--	1	1	Syria	--	1	1			
Poland	1	4	5	Taiwan	4	50	54			
Portugal	--	1	1	Thailand	2	32	34			
Romania	3	11	14	Turkey	3	36	39			
Russian Fed.	--	24	24	United Arab Emirates	1	--	1			
Serbia	--	3	3	Uzbekistan	--	1	1			
Slovakia	1	2	3	Vietnam	2	3	5			
Spain	--	16	16	Oceania	Australia	1	--	1		
Sweden	--	3	3		New Zealand	--	1	1		
Switzerland	--	2	2							
Ukraine	1	2	3							
Not Reported <sup>1</sup>							63	313	376	
TOTAL							211	1,702	1,913	

<sup>1</sup> Includes foreign students using U.S. addresses.  
DATA SOURCE: 2003, ISIS Database



---

# New Student Characteristics

## UIC

---

### **HIGHLIGHTS**

- *Enrollment of new freshmen is up 8.6 percent over fall 1993, but down 2.5 percent from last year's large class. New freshmen enrollment in Liberal Arts and Sciences, the largest college, is up 8.2 percent compared to ten years ago; enrollment in both Architecture & Arts and Applied Health Sciences are up over 30 percent over ten years ago; and enrollment is down 4.8 percent in Engineering compared to a decade ago. See Table 10 and Table 10.1.*
- *New transfer enrollment has decreased from a high of 2,159 in 1993 to 1,245, a 42.3 percent decrease and a new ten-year low. Particularly for fall 2003, the number of new transfer students is lower in order to balance the large freshman class of 2002 and the large number of continuing students re-enrolling in 2003. A large proportion of the decrease came from the College of Liberal Arts and Sciences, which enrolled about one-half as many new transfer students compared to last year. See Table 11.*
- *The average American College Test (ACT) composite score for 2003 beginning freshmen was 23.4, a new high and 3.2 points higher than the mean of Illinois test-takers. After several years of a mean high school percentile rank of 76.0, it dropped slightly the last two years to 74.9 in Fall 2003.*
- *Beginning freshmen are older than students entering were five years ago. The percentage of students aged under 18 went from 3.2 to 1.8 percent; 18-year-old beginning freshman comprised 73.0 percent of the Fall 1998 cohort compared to 62.2 percent of the current cohort; and the percentage of students over 18 grew from 23.8 percent in Fall 1997 to 35.9 percent in Fall 2003. See Table 14.*
- *Tables 14-16 present selected demographics of the fall 2002 beginning students, and geographic characteristics such as origin, residency, and transfer institution are mapped in Figures 12-14.*
- *The Chicago area continues to be the main source of new students—supplying 93 percent of the UIC new freshman (with 73 percent of the total new freshman coming from the city) and about 47 percent of all new transfer enrollment. Illinois residents comprise 75 percent of new graduate and professional students. See Figures 12-14.*

**Table 10**

**UIC BEGINNING FRESHMEN BY COLLEGE OF ENTRY  
FALL 1993 - FALL 2003**

<u>COLLEGE</u>	<u>1993</u>	<u>1994</u>	<u>1995</u>	<u>1996</u>	<u>1997</u>	<u>1998</u>	<u>1999</u>	<u>2000</u>	<u>2001</u>	<u>2002</u>	<u>2003</u>
Architecture & Arts <sup>1</sup>	110	110	115	155	138	192	143	143	148	124	150
Applied Health Sci. <sup>2</sup>	48	46	58	44	67	52	48	66	49	48	64
Business Admin.	224	213	259	264	305	278	278	226	242	303	247
Engineering	293	255	285	324	353	325	301	352	331	279	279
Lib. Arts & Sciences	2,035	1,905	1,755	1,917	1,955	2,000	1,797	2,002	1,922	2,261	2,202
Nursing <sup>3</sup>	--	42	57	103	72	100	49	54	--	--	--
<b>Total</b>	<b>2,710</b>	<b>2,571</b>	<b>2,529</b>	<b>2,807</b>	<b>2,890</b>	<b>2,947</b>	<b>2,616</b>	<b>2,843</b>	<b>2,692</b>	<b>3,015</b>	<b>2,942</b>

**Table 10.1**

**CHANGE IN UIC BEGINNING FRESHMAN ENROLLMENT BY COLLEGE OF ENTRY  
BETWEEN FALL 1993 AND FALL 2003**

<u>COLLEGE</u>	<u>1993</u>	<u>2003</u>	<u>% Change</u>
Architecture & Arts <sup>1</sup>	110	150	36.4
Applied Health Sci. <sup>2</sup>	48	64	33.3
Business Admin.	224	247	10.3
Engineering	293	279	(4.8)
Lib. Arts & Sciences	2,035	2,202	8.2
	<b>2,710</b>	<b>2,942</b>	<b>8.6</b>

<sup>1</sup> In 1995, Architecture, Art, and Urban Planning changed to Architecture and the Arts. Urban Planning is now a part of Urban Policy and Public Affairs in the Graduate College.

<sup>2</sup> Effective Fall 2001, the College of Health and Human Development Sciences was changed to the College of Applied Health Sciences.

<sup>3</sup> From Fall 1994 to Fall 2000, Nursing accepted freshmen.

**Table 11**  
**UIC NEW TRANSFERS BY COLLEGE OF ENTRY**  
**FALL 1993 - FALL 2003**

<u>COLLEGE</u>	<u>1993</u>	<u>1994</u>	<u>1995</u>	<u>1996</u>	<u>1997</u>	<u>1998</u>	<u>1999</u>	<u>2000</u>	<u>2001</u>	<u>2002</u>	<u>2003</u>
Architecture & Arts <sup>1</sup>	144	131	127	96	102	113	129	131	93	122	108
Applied Health Sci. <sup>2</sup>	189	184	145	119	113	121	146	62	53	55	89
Business Admin.	250	251	218	240	270	271	277	245	220	388	254
Education	17	11	11	13	9	4	0	3	1	4	5
Engineering	216	189	182	230	156	192	114	153	121	128	122
Lib. Arts & Sciences	1,247	1,191	1,147	1,017	1,029	1,033	1,139	1,037	1,012	1,184	556
Nursing	78	110	103	83	55	60	63	58	71	77	92
Social Work	18	13	24	15	17	12	13	16	18	15	19
<b>Campus Total</b>	<b>2,159</b>	<b>2,080</b>	<b>1,957</b>	<b>1,813</b>	<b>1,751</b>	<b>1,806</b>	<b>1,881</b>	<b>1,705</b>	<b>1,589</b>	<b>1,973</b>	<b>1,245</b>

**Table 11.1**  
**CHANGE IN UIC NEW TRANSFER ENROLLMENT BY COLLEGE OF ENTRY**  
**BETWEEN FALL 1993 AND FALL 2003**

<u>COLLEGE</u>	<u>1993</u>	<u>2003</u>	<u>% Change</u>
Architecture & Arts <sup>1</sup>	144	108	(25.0)
Applied Health Sci. <sup>2</sup>	189	89	(52.9)
Business Admin.	250	254	1.6
Education	17	5	(70.6)
Engineering	216	122	(43.5)
Lib. Arts & Sciences	1,247	556	(55.4)
Nursing	78	92	17.9
Social Work	18	19	5.6
<b>Campus Total</b>	<b>2,159</b>	<b>1,245</b>	<b>(42.3)</b>

<sup>1</sup> In 1995, Architecture, Art, and Urban Planning changed to Architecture and the Arts. Urban Planning is now a part of Urban Policy and Public Affairs in the Graduate College.

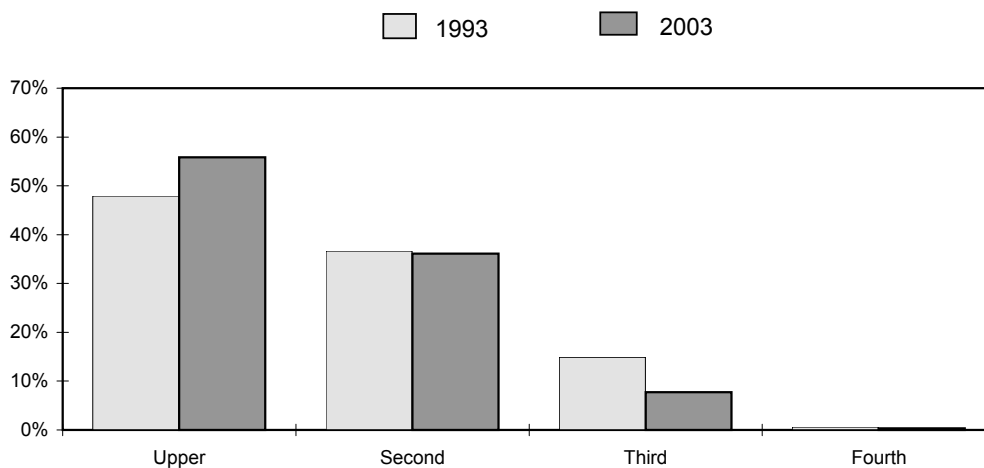
<sup>2</sup> Effective Fall 2001, the College of Health and Human Development Sciences was changed to the College of Applied Health Sciences.

**Table 12**

**UIC BEGINNING FRESHMEN BY  
HIGH SCHOOL PERCENTILE RANK DISTRIBUTION AND MEANS  
FALL 1993 - FALL 2003**

<u>QUARTILE<sup>1</sup></u>	<u>1993</u>	<u>1994</u>	<u>1995</u>	<u>1996</u>	<u>1997</u>	<u>1998</u>	<u>1999</u>	<u>2000</u>	<u>2001</u>	<u>2002</u>	<u>2003</u>
Upper Quartile	47.9	52.2	52.9	55.5	57.8	59.1	59.8	59.0	59.6	57.2	55.9
Second Quartile	36.7	35.9	35.6	35.6	34.1	32.5	33.9	33.2	33.5	34.4	36.1
Third Quartile	14.9	11.8	11.1	8.8	8.0	8.2	6.1	7.6	6.7	8.1	7.7
Fourth Quartile	<u>0.6</u>	<u>0.2</u>	<u>0.5</u>	<u>0.2</u>	<u>0.2</u>	<u>0.2</u>	<u>0.1</u>	<u>0.2</u>	<u>0.2</u>	<u>0.3</u>	<u>0.3</u>
Total	100.0%	100.0%	100.0%	100.0%	100.0%	100.0%	100.0%	100.0%	100.0%	100.0%	100.0%
<b>Mean HSPR</b>	<b>72.3</b>	<b>73.0</b>	<b>74.4</b>	<b>74.8</b>	<b>75.8</b>	<b>76.1</b>	<b>76.7</b>	<b>76.0</b>	<b>76.0</b>	<b>75.1</b>	<b>74.9</b>

**UIC Beginning Freshmen  
Percent Distribution by HSPR Quartiles  
Fall 1993 and Fall 2003**



**Figure 11**

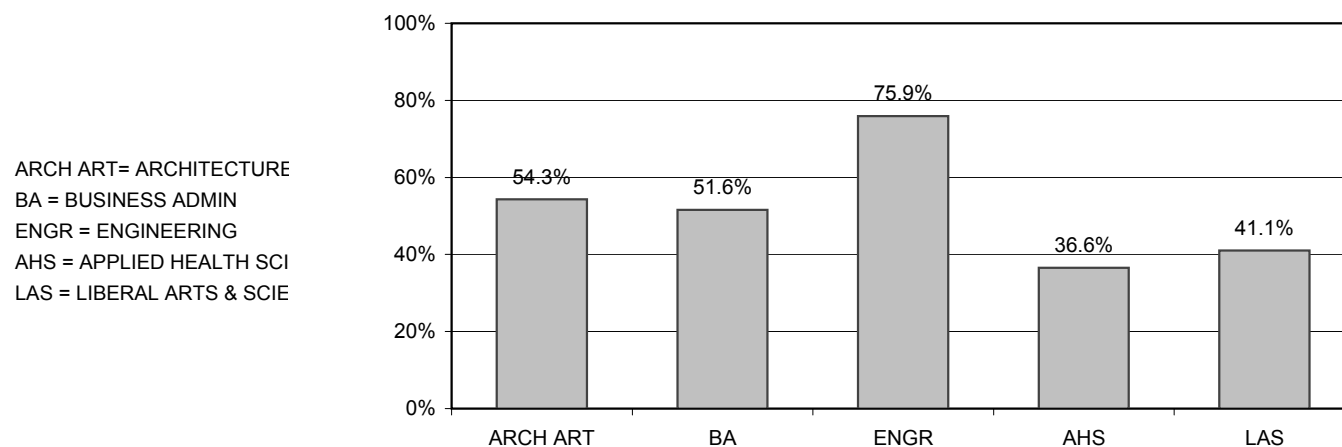
<sup>1</sup> Not Reported not included.

Note: Totals may not equal 100.0% due to rounding.

DATA SOURCES: 1993-2003: UOAPA Freshman Class Profile; UIC

**Table 13****UIC BEGINNING FRESHMEN BY  
ACT COMPOSITE SCORE DISTRIBUTION AND GROUP MEAN**

COMPOSITE SCORE	1993	1994	1995	1996	1997	1998	1999	2000	2001	2002	2003
Above 32	0.0	0.2	0.1	0.4	0.3	1.2	1.1	1.9	0.9	1.2	1.3
30 - 32	1.9	2.1	2.0	3.5	3.3	4.5	4.2	4.1	4.2	3.0	4.7
27 - 29	5.9	5.8	8.4	8.9	11.4	10.1	12.6	11.7	13.0	12.9	13.8
24 - 26	14.7	15.5	17.1	20.4	20.6	23.6	23.1	23.3	25.0	24.5	24.9
21 - 23	28.2	26.0	29.0	30.5	31.2	28.8	31.4	30.6	29.9	28.9	29.7
18 - 20	32.1	29.7	28.1	25.1	23.3	22.5	20.1	20.6	19.9	21.6	22.3
15 - 17	16.0	17.0	13.5	10.5	9.5	8.8	7.5	7.7	7.0	7.7	3.3
Below 15	1.2	3.7	1.8	0.7	0.4	0.6	0.0	0.0	0.1	0.1	0.0
TOTAL	100.0%	100.0%	100.0%	100.0%	100.0%	100.0%	100.0%	100%	100.0%	100.0%	100%
Mean ACT:C	20.9	20.9	21.4	22.1	22.5	22.7	23.0	22.9	23.0	22.7	23.4
Illinois Mean ACT:C <sup>1</sup>	21.0	21.1	21.1	21.2	21.2	21.4	21.4	21.5	21.6	20.1 <sup>1</sup>	20.2 <sup>1</sup>

**Percent of Fall 2003 Beginning Freshmen  
with ACT:C Score of 24 or Higher  
by College of Entry****Figure 11.1**

<sup>1</sup> Starting with the 2002 graduating class, all Illinois high school students are required to take the Prairie State Assessment Exam, which included the ACT; therefore, mean scores may not be comparable across years.

Note: Totals may not equal 100.0% due to rounding.

DATA SOURCES: 1993-2003: UOAPA Freshman Class Profile: UIC

**Table 14**

**SELECTED CHARACTERISTICS OF UIC FALL 1998 AND FALL 2003 BEGINNING FRESHMEN**

		<b>Fall 1998</b>	<b>Fall 2003</b>
Fall Enrollment		2,947	2,942
Gender	Male	43.2%	45.7%
	Female	56.8%	54.3%
Age as of 12/31	15 - 17	3.2%	1.8%
	18	73.0%	62.2%
	19 & over	23.8%	35.9%
Race/Ethnicity	Am.Ind./Alaskan Nat.	0.2%	0.3%
	Black	11.1%	8.8%
	Asian/Pac. Islander	26.6%	29.1%
	Hispanic	17.9%	16.6%
	White	40.0%	38.2%
	International	0.8%	0.5%
	Unknown	3.4%	6.5%
Major High School Feeders	Lane Tech	161	117
	Niles West	65	60
	Niles North	46	42
	Maine Twp HS East	*	41
	Whitney Young Magnet	53	38
	Von Steuben Metro	*	38

\* The high school was not among the top feeder schools in the historical year.

DATA SOURCES: 1998, Research Data Base: UOAPA. 2003, ISIS Database.

Table 15

SELECTED CHARACTERISTICS OF UIC FALL 2003 NEW TRANSFER STUDENTS<sup>1</sup>

TWO-YEAR COLLEGES		FOUR-YEAR COLLEGES	
		Fall Enrollment	
812		Number	390
67.6%		Percent of Total	32.4%
		Transfer GPA <sup>2</sup>	
40.2%		4.26 - 5.00	31.2%
41.3%		3.76 - 4.25	38.1%
16.8%		3.26 - 3.75	21.3%
1.6%		Below 3.26	9.4%
		Age as of 12/31	
3.3%		Less than 20	16.7%
43.5%		20 - 21	41.0%
24.8%		22 - 23	18.7%
18.4%		24 - 29	16.7%
10.0%		30 and over	6.9%
		Gender	
46.7%		Male	37.2%
53.3%		Female	62.8%
		Race/Ethnicity	
0.0%		Am.Ind./Alaskan Nat.	0.0%
8.6%		Black	10.8%
16.3%		Asian/ Pac. Islander	12.1%
11.0%		Hispanic	11.3%
53.3%		White	51.3%
2.1%		International	4.4%
8.7%		Not Reported	10.3%
		Class Level at Transfer	
5.8%		Advanced Freshman	17.2%
40.0%		Sophomore	35.9%
45.6%		Junior	24.6%
8.5%		Senior	15.9%
0.1%		Second Bachelor	6.4%
		Major Feeder Institutions	
DuPage	121	UIUC	49
Oakton	77	Illinois State	17
Moraine Valley	72	Northeastern	17
Harper	67	Loyola	14
CCC-Washington	50	Eastern	13

<sup>1</sup> Because the University is changing student data systems, the print version of this table was based on incomplete data. This table provides revised information.

<sup>2</sup> Missing GPA not included in distribution.

**Table 16**

**SELECTED CHARACTERISTICS OF  
UIC FALL 2003 NEW PROFESSIONAL AND GRADUATE STUDENTS**

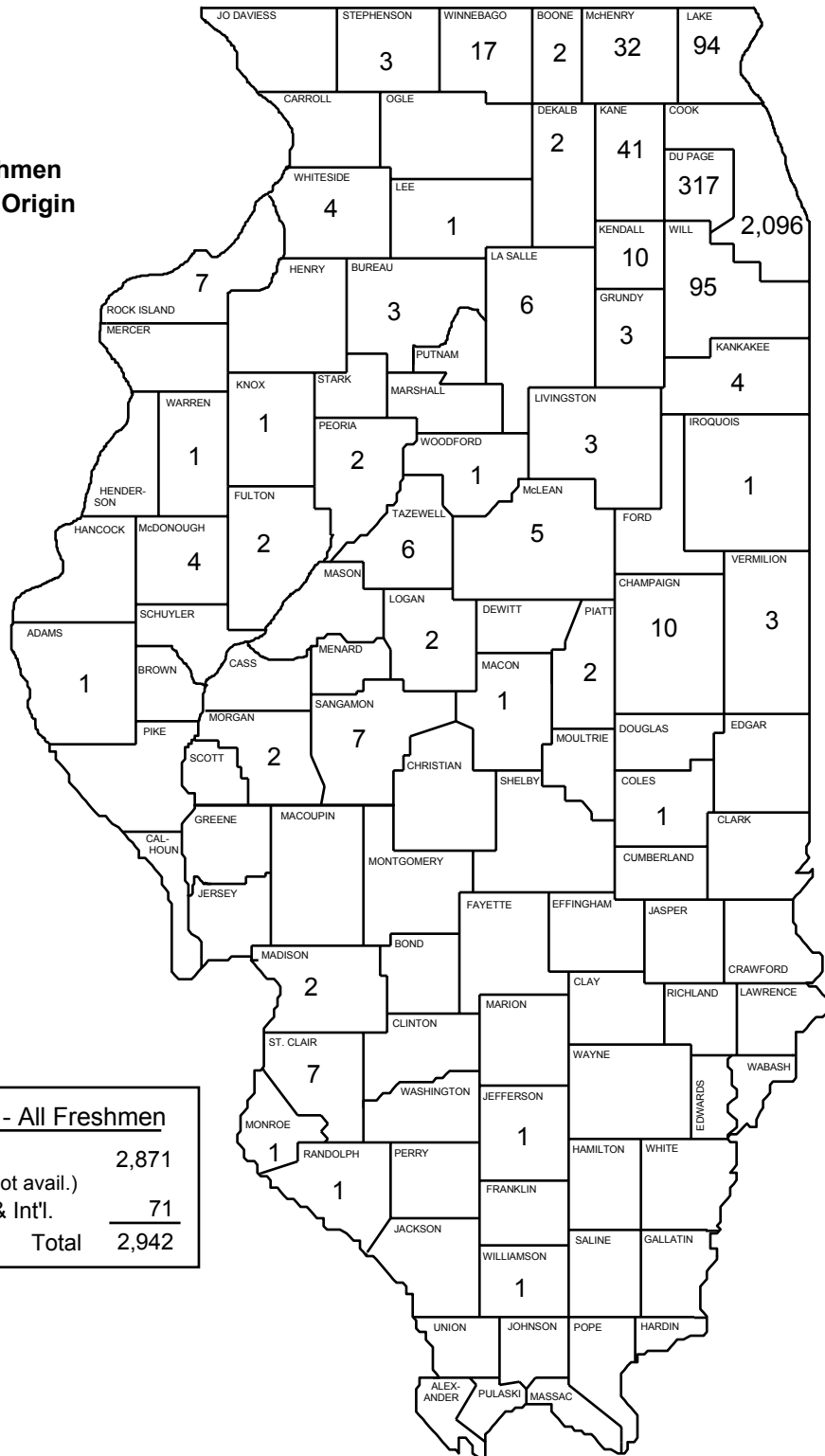
		<u>Graduate</u>	<u>Professional</u>
Fall Enrollment		2,012	573
Gender	Male	38.7%	44.0%
	Female	61.3%	56.0%
Age	Less than 22	1.8%	14.5%
	22 - 23	20.9%	44.7%
	24 - 29	46.3%	31.8%
	30 - 39	20.3%	7.7%
	40 & over	10.6%	1.4%
Race/Ethnicity	Am.Ind./Alaskan Nat.	0.3%	0.3%
	Black	9.0%	6.5%
	Asian/Pac. Islander	7.8%	34.2%
	Hispanic	6.7%	7.0%
	White	50.7%	46.4%
	International	18.9%	1.7%
	Unknown	6.5%	3.8%
Residency <sup>1</sup>	Resident	68.8%	86.7%
	Non-Resident	31.2%	13.3%
Graduate Status	Full-Time	55.5%	99.7%
	Part-Time	44.5%	0.3%

<sup>1</sup> Per tuition assessment



**UIC First-Time Freshmen  
 By Illinois County of Origin  
 Fall 2003**

**Total = 2,871**

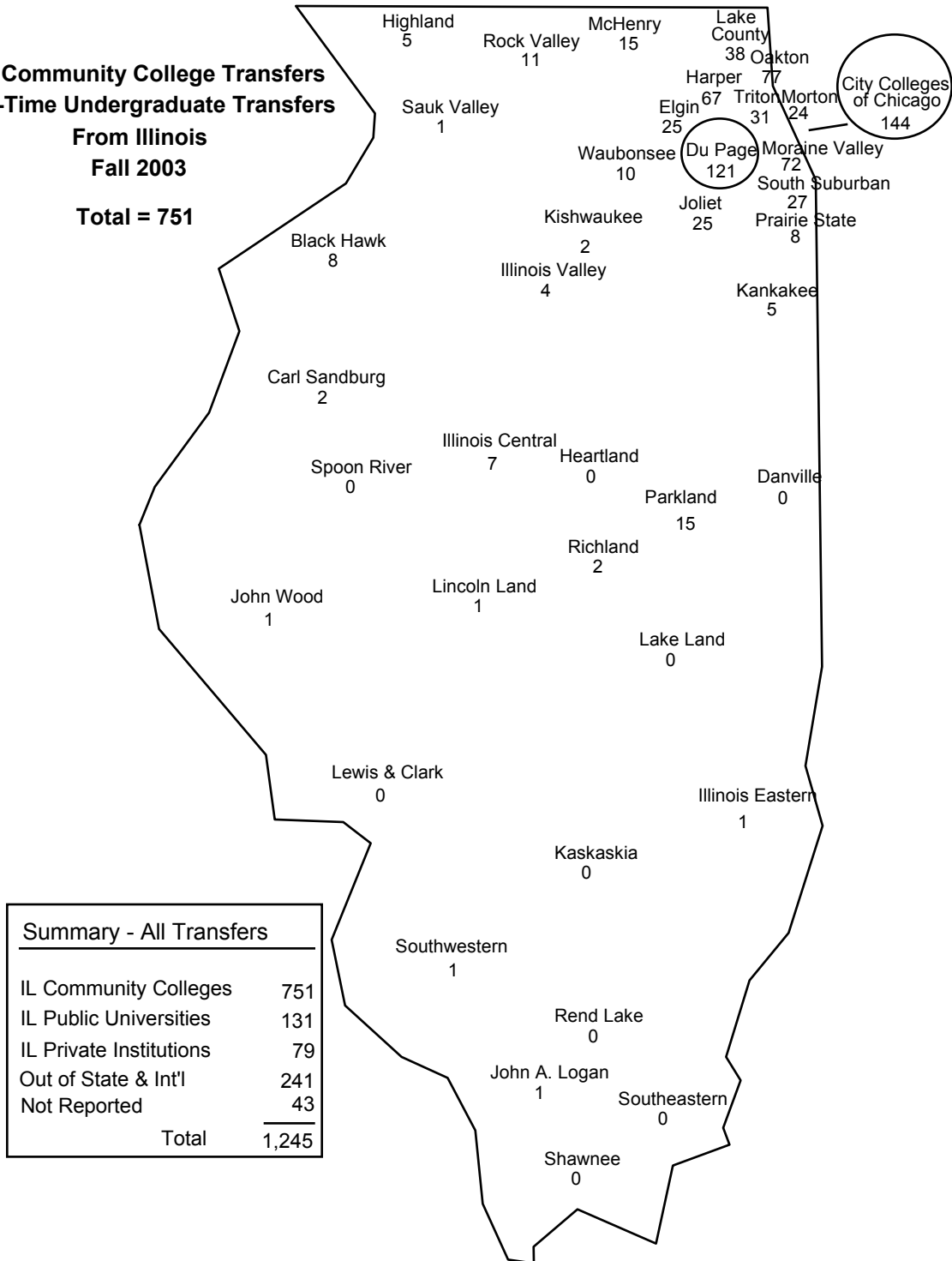


Summary - All Freshmen	
IL Freshmen (incl. county not avail.)	2,871
Out-of-State & Int'l.	71
<b>Total</b>	<b>2,942</b>

Figure 12

**UIC Community College Transfers  
First-Time Undergraduate Transfers  
From Illinois  
Fall 2003**

**Total = 751**



**Figure 13**

GEOGRAPHICAL DISTRIBUTION OF UIC NEW STUDENT RESIDENCY  
 FALL 2003

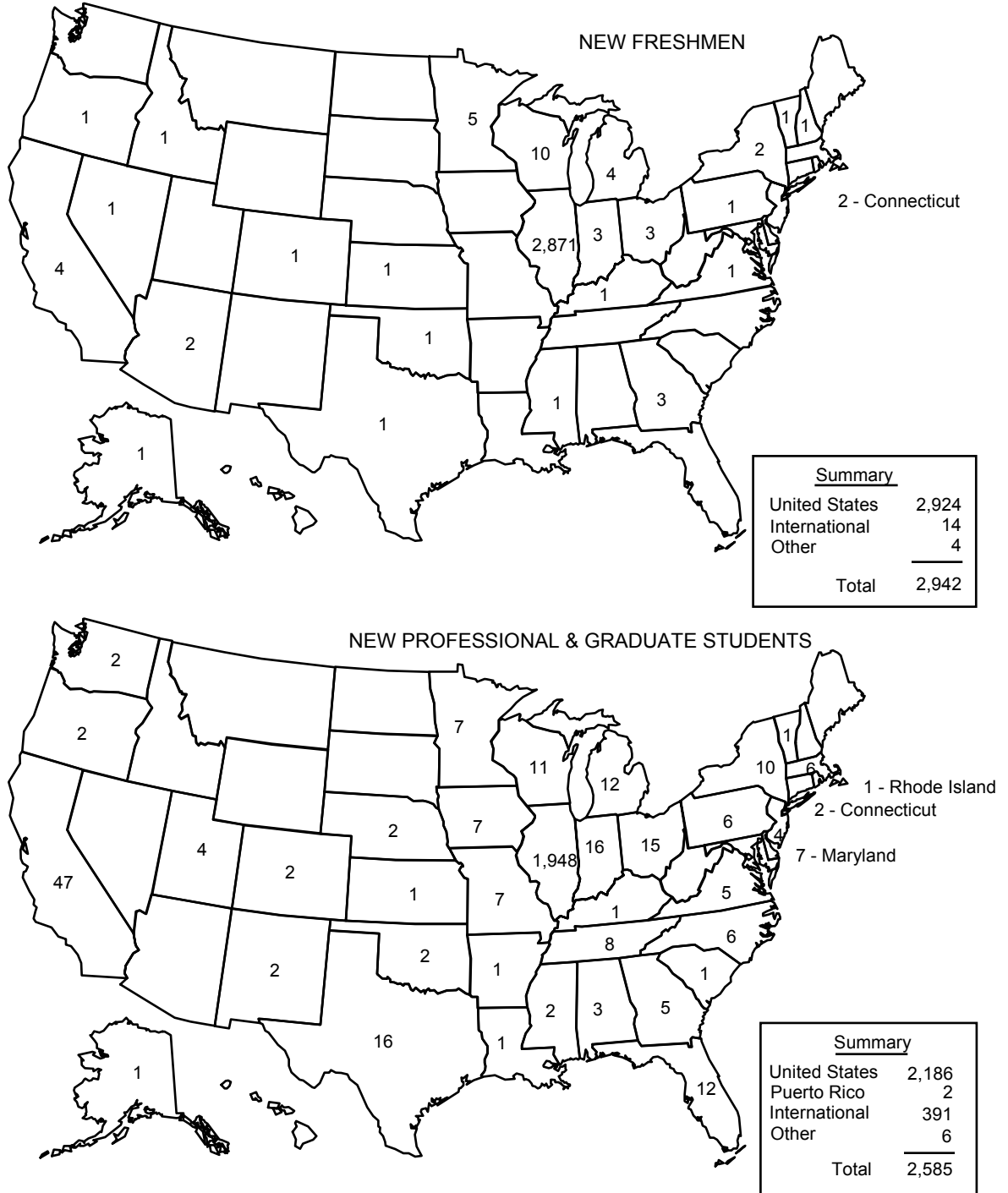


Figure 14

"Other" includes U.S. citizens using foreign addresses.  
 DATA SOURCE: 2003, ISIS Database

---

# Academic Performance

## UIC

---

### HIGHLIGHTS

- *Retention rates, which reflect the combination of graduated and still enrolled students, illustrate attendance patterns at UIC. These tables in the current Data Book reflect an updating of enrollment and graduation data covering more than the past 10 years.*
- *Five years after matriculation, just over 35 percent of students who were freshmen in 1998 have graduated, and nearly 15 percent are still enrolled. In the eighth year (students who were freshmen in 1995), almost 46 percent have graduated and nearly 2 percent are still enrolled. See Table 17.*
- *For the last several years, graduation rates in year four have been increasing. For example, the graduation rate in year four for the 1999 cohort was 17 percent, compared to 8 percent for the 1994 cohort. The most recent figures for fifth year graduation rates also show a striking increase. Earlier cohorts have graduated at rates as low 23 percent, as opposed to the 1998 cohort, which had graduated over 35 percent by the fifth year. See Table 17.*
- *At nearly 50 percent, the six-year retention rate for the 1997 cohort of all students is up compared to earlier groups. By race/ethnicity, Asian students have the highest retention (58 percent), followed by white students (52 percent), Hispanic students (45 percent), and finally Black students (32 percent). Though unacceptably low, the retention rate of Black students is double what it was in the early eighties. See Table 17 and Figure 15.*
- *First-time transfer students who matriculated to UIC in fall 1980, 1989, and 1998 are tracked for five years following transfer as shown in Table 18 and Figure 16. Thirty-three percent graduated from the 1980 cohort, 44 percent from the 1989 cohort, and 58 percent from the 1998 cohort.*
- *Retention data for the 1989 and 1998 transfer cohorts are broken down by class level in Table 19. Students who transfer as juniors show higher graduation and retention rates than any other class, and the graduation rates of the 1998 cohort are higher than the 1989 cohort at each class level.*

**Table 17**

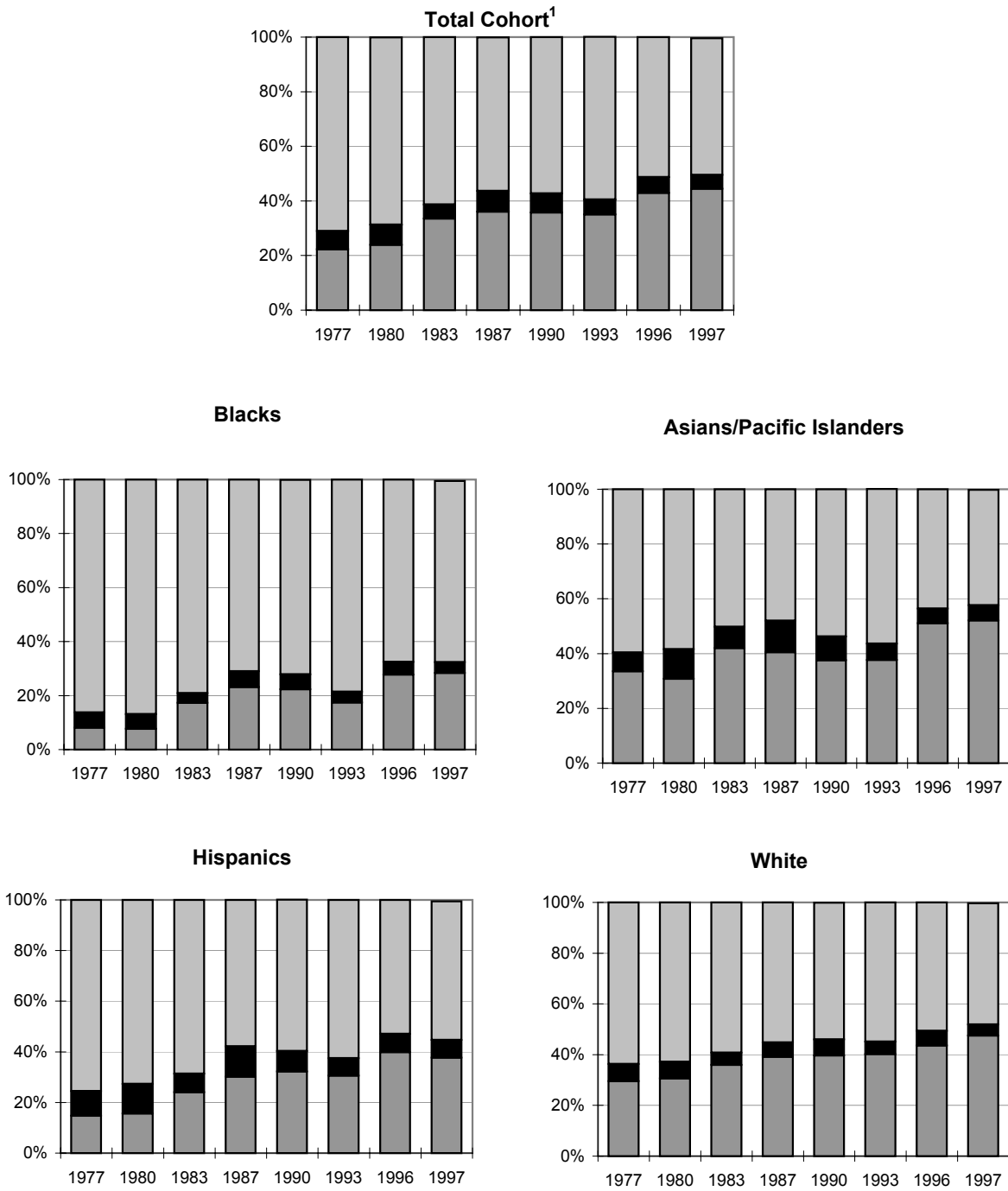
**RETENTION PATTERNS FOR UIC BEGINNING FRESHMEN  
PERCENT GRADUATED OR ENROLLED BY YEARS SINCE MATRICULATION**

Entering Fall Term	Number in Cohort	End of Year:									
		1	2	3	4	5	6	7	8	9	10+
1990	2,542	69.3	54.4	47.9	35.6	16.4	7.4	3.2	2.2	1.1	0.2
1991	2,513	70.8	52.0	43.7	32.7	15.3	7.3	3.4	1.6	0.8	0.2
1992	2,667	70.4	53.5	47.7	35.9	17.6	6.6	3.1	1.4	0.8	0.3
1993	2,710	67.6	54.2	47.1	37.1	16.8	7.2	3.1	1.4	1.0	0.6
1994	2,572	69.7	54.1	48.0	36.9	16.8	6.6	3.7	1.9	0.9	
1995	2,533	72.5	59.1	51.9	38.0	17.4	6.6	3.0	1.7		
1996	2,807	74.0	59.9	51.7	36.1	14.6	6.3	2.6			
1997	2,890	75.1	60.7	52.9	38.3	15.1	5.2				
1998	2,947	74.8	59.2	52.8	37.6	14.6					
1999	2,616	77.3	64.8	57.5	38.8						
2000	2,843	77.9	64.8	57.5							
2001	2,692	78.3	64.8								
2002	3,015	77.3									
<b>Percent Still Enrolled at End of Year</b>											
1990		0.0	0.0	0.4	9.0	26.6	35.2	39.2	40.6	41.5	42.5
1991		0.0	0.1	0.3	7.1	23.0	30.8	34.7	36.4	37.0	37.7
1992		0.0	0.0	0.3	8.0	25.0	35.1	39.0	40.3	40.9	41.5
1993		0.0	0.0	0.3	7.2	26.1	35.0	38.7	40.2	40.8	41.3
1994		0.0	0.0	0.2	8.1	26.1	35.8	39.3	40.9	41.8	
1995		0.0	0.0	0.4	10.9	30.0	40.5	44.6	45.7		
1996		0.0	0.0	1.1	14.1	34.7	42.9	46.9			
1997		0.0	0.0	1.2	13.7	35.7	44.5				
1998		0.0	0.0	1.4	13.8	35.2					
1999		0.0	0.0	1.7	16.9						
2000		0.0	0.0	1.9							
2001		0.0	0.0								
2002		0.0	0.0								
<b>Cumulative Percent Graduated by End of Year</b>											
1990		69.3	54.4	48.3	44.6	43.0	42.6	42.4	42.8	42.6	42.7
1991		70.8	52.1	44.0	39.8	38.3	38.1	38.1	38.0	37.8	37.9
1992		70.4	53.5	48.0	43.9	42.6	41.7	42.1	41.7	41.7	41.8
1993		67.6	54.2	47.4	44.3	42.9	42.2	41.8	41.6	41.8	41.9
1994		69.7	54.1	48.2	45.0	42.9	42.4	43.0	42.8	42.7	
1995		72.5	59.1	52.3	48.9	47.4	47.1	47.6	47.4		
1996		74.0	59.9	52.8	50.2	49.3	49.2	49.5			
1997		75.1	60.7	54.1	52.0	50.8	49.7				
1998		74.8	59.2	54.2	51.4	49.8					
1999		77.3	64.8	59.2	55.7						
2000		77.9	64.8	59.4							
2001		78.3	64.8								
2002		77.3									
<b>Retention Percent Graduated or Still Enrolled</b>											

Note: "Graduated" includes bachelor's and PharmD degrees awarded through the spring semester of a given year;  
"still enrolled" includes degrees awarded in the following summer plus undergraduates and Pharmacy majors  
enrolled in the following fall.

**Six-Year Graduation and Retention Rates  
By Race/Ethnicity  
Selected Freshman Cohorts, 1977-1997**

■ Graduated ■ Still Enrolled □ Non-Persisters



**Figure 15**

<sup>1</sup> Includes Native Americans, foreign students, and those with unknown race/ethnicity.

DATA SOURCE: Data Resources & Institutional Analysis: UIC

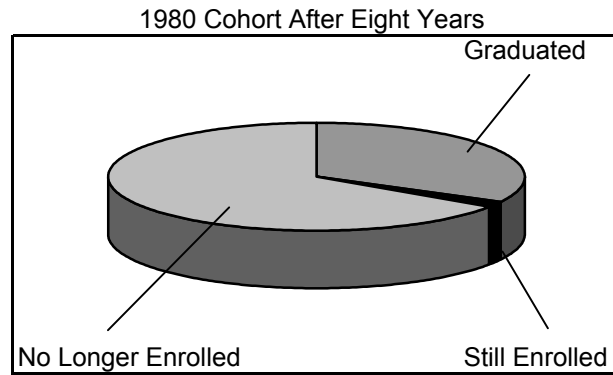
**Table 18**

**RETENTION PATTERNS FOR UIC FIRST-TIME TRANSFERS  
FOR 1980, 1989, AND 1998 COHORTS**

1980 Cohort After Eight Years

Number in Cohort: 2,079

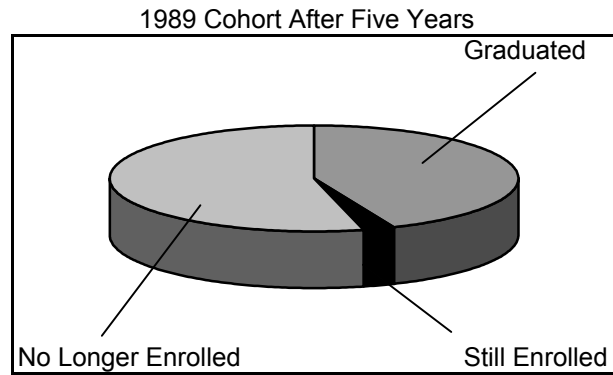
	<u>Number</u>	<u>Percentage</u>
Graduated	684	32.9%
Still Enrolled	31	1.5%
No Longer Enrolled	1,364	65.6%
Total	2,079	100.0%



1989 Cohort After Five Years

Number in Cohort: 1,862

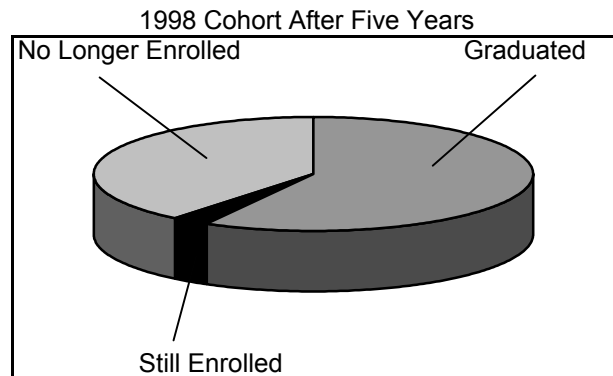
	<u>Number</u>	<u>Percentage</u>
Graduated	814	43.7%
Still Enrolled	45	2.4%
No Longer Enrolled	1,003	53.9%
Total	1,862	100.0%



1998 Cohort After Five Years

Number in Cohort: 1,756

	<u>Number</u>	<u>Percentage</u>
Graduated <sup>1</sup>	1,018	58.0%
Still Enrolled	49	2.8%
No Longer Enrolled	688	39.2%
Total	1,756	100.0%



**Figure 16**

Non-degree transfers not included in total.

<sup>1</sup> Includes PharmD and BS in Dentistry.

DATA SOURCES: 1980, Office of Planning and Resources Management

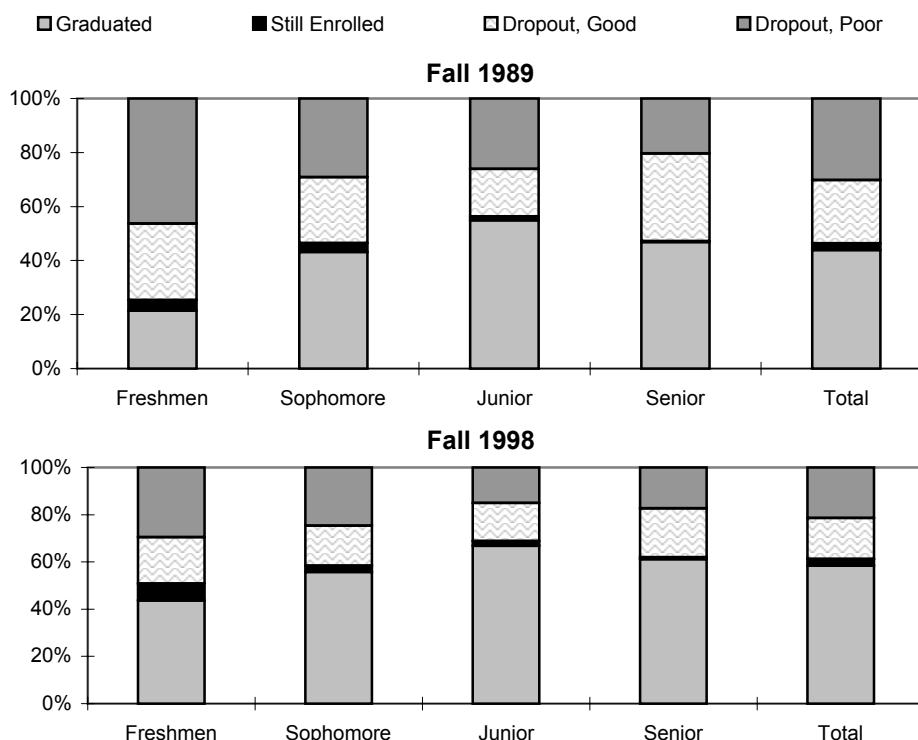
1989, 1998, Data Resources and Institutional Analysis: UIC

**Table 19**  
**UIC FIVE-YEAR RETENTION RATES FOR NEW TRANSFERS**  
**BY ENTERING CLASS LEVEL**  
**FALL 1989 AND FALL 1998 COHORTS**

Five-Year Retention and Graduation Rates Fall 1989 & Fall 1998 New Degree-Seeking Transfers										
	Freshman		Sophomore		Junior		Senior		Total	
<u>Retention</u>	<u>1989</u>	<u>1998</u>	<u>1989</u>	<u>1998</u>	<u>1989</u>	<u>1998</u>	<u>1989</u>	<u>1998</u>	<u>1989</u>	<u>1998</u>
Graduated	21.5	43.6	43.0	55.3	54.7	66.5	46.7	59.6	43.8	58.0
Still Enrolled	3.7	7.3	3.3	2.7	1.4	2.1	0.3	0.9	2.4	2.8
Subtotal	25.2	50.9	46.3	58.0	56.1	68.6	47.0	60.5	46.2	60.8
<u>No Longer Enrolled<sup>1</sup></u>										
Good Standing	28.4	19.6	24.3	16.9	17.6	16.0	32.4	20.2	23.5	17.3
Poor Standing	46.1	29.6	29.0	24.5	26.0	15.0	20.3	16.9	30.1	21.2
Unknown Standing	0.3	0.0	0.6	0.6	0.3	0.4	0.5	2.4	0.4	0.7
Subtotal	74.8	49.1	53.9	42.0	43.9	31.4	53.2	39.5	54.0	39.2
<b>TOTAL</b>	<b>100%</b>	<b>100%</b>	<b>100%</b>	<b>100%</b>	<b>100%</b>	<b>100%</b>	<b>100%</b>	<b>100%</b>	<b>100%</b>	<b>100%</b>

Totals may not equal 100% due to rounding.

**New Transfer 5-Yr Graduation and Retention Rates by Entering Class**



**Figure 16.1**

Dropout in poor standing includes probation and dropped by university action.

<sup>1</sup> 1989 Cohort: Nondegree transfers (N=114) not shown. Total Cohort numbers 1,983.

1998 Cohort: Nondegree transfers (N=50) not shown. Total cohort numbers 1,806.

DATA SOURCE: 1989, UIC Student Data Books; 1998, Data Resources and Institutional Analysis.



---

# Degrees Conferred

## UIC

---

### **HIGHLIGHTS**

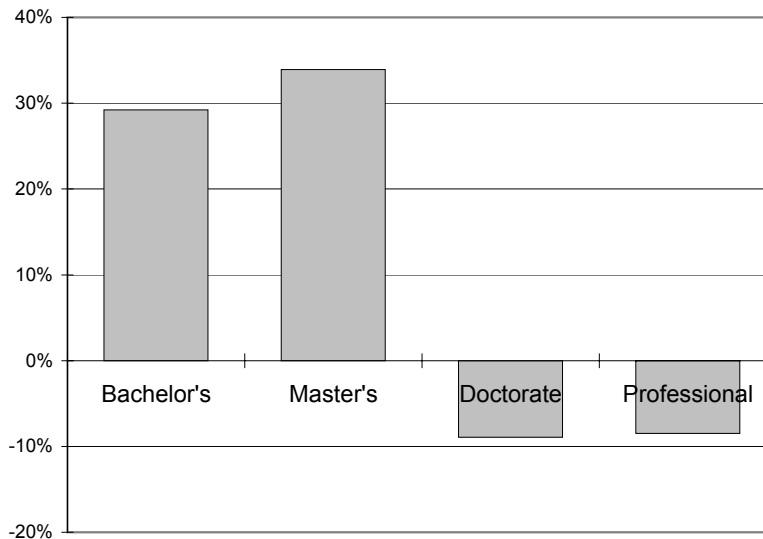
- *In FY 2003, the campus conferred 5,810 degrees, up 217 from last year and an increase of 1,132 from ten years ago. In the last ten years, degrees granted have increased at both the master's and bachelor's levels; bachelor's degrees conferred are up by almost 30 percent, and master's degrees are up by more than one-third since FY 1993. In contrast, at the doctorate level, more degrees were conferred FY 2003 than since 1997, but 22 fewer than the 247 conferred in FY 1993. The number of degrees awarded to first professional students has varied from year to year, but is near the low end of the ten-year range.*
- *Table 21 and Figure 18 display the number of undergraduate degrees conferred by college since 1993. In 2003, 3,273 were granted; this number is a new high.*
- *Table 22 and Figure 19 report degrees conferred by level and by gender in FY 2003. Females account for almost 57 percent of the undergraduate degrees, about 58 percent of the master's, 48 percent of the doctorate, and over 50 percent of first professional degrees.*
- *Tables 23 and 23.1 report the number and percent of FY 2003 degrees conferred by race/ethnicity. Overall, 46.4 percent of FY 2003 degrees were granted to White students compared to 63 percent in FY 1993.*
- *The percentages of degrees awarded to Black and Hispanic students combined were slightly lower at the undergraduate and Master's levels, but increased at Doctoral and Professional levels compared to last year. In FY 2003, 22.5 percent of baccalaureate degrees (23.5 percent in FY 2002), 10.3 percent of master's degrees (11.1 percent in FY 2002), 13.1 percent of doctoral degrees (8.4 percent in FY 2002), and 18.4 percent of professional degrees (17.9 percent in FY 2002) were awarded to Black or Hispanic students. See Tables 23 and 23.1 for FY 2003 figures (Figures for FY 2002 are found in the 2002 Data Book).*

**Table 20**

**NUMBER OF UIC DEGREES CONFERRED BY LEVEL  
FY 1993 - FY 2003**

DEGREE	1993	1994	1995	1996	1997	1998	1999	2000	2001	2002	2003
Bachelor's	2,533	2,805	3,003	2,788	2,769	2,974	2,822	3,010	3,184	3,201	3,273
Master's	1,356	1,451	1,519	1,428	1,488	1,540	1,445	1,644	1,702	1,693	1,816
Doctorate	247	235	246	241	242	224	221	204	198	178	225
Professional <sup>1</sup>	542	526	533	497	525	563	555	551	492	521	496
<b>Campus Total</b>	<b>4,678</b>	<b>5,017</b>	<b>5,301</b>	<b>4,954</b>	<b>5,024</b>	<b>5,301</b>	<b>5,043</b>	<b>5,409</b>	<b>5,576</b>	<b>5,593</b>	<b>5,810</b>

**Percent Change in UIC Degrees Conferred  
by Level -- FY 1993 and FY 2003**



**Figure 17**

<sup>1</sup> Professional degrees include medicine, dentistry, pharmacy, and advanced certificates in dentistry.  
DATA SOURCES: 1993-2003, Research Data Base: UOAPA

Table 21

**NUMBER OF UIC UNDERGRADUATE DEGREES CONFERRED BY COLLEGE  
FY 1993 - FY 2003**

COLLEGE	1993	1994	1995	1996	1997	1998	1999	2000	2001	2002	2003
Architecture & the Arts <sup>1</sup>	186	198	209	188	244	219	189	221	220	226	232
Applied Health Sci. <sup>3</sup>	117	232	264	258	253	245	216	229	205	230	133
Business Administration	567	630	618	500	508	461	550	639	681	684	732
Dentistry	39	35	62	43	27	43	40	38	35	37	36
Education <sup>2</sup>	72	59	94	85	66	109	89	100	91	76	64
Engineering	337	303	359	355	315	393	353	342	403	405	388
Kinesiology <sup>3</sup>	31	10	--	--	--	--	--	--	--	--	--
Liberal Arts & Sciences	1,032	1,121	1,104	1,095	1,142	1,263	1,194	1,286	1,386	1,376	1,441
Nursing	119	170	249	219	167	196	157	122	130	124	199
Social Work	33	47	44	45	47	45	34	33	33	43	48
<b>Campus Total</b>	<b>2,533</b>	<b>2,805</b>	<b>3,003</b>	<b>2,788</b>	<b>2,769</b>	<b>2,974</b>	<b>2,822</b>	<b>3,010</b>	<b>3,184</b>	<b>3,201</b>	<b>3,273</b>

**Percent Change in UIC Undergraduate Degrees Conferred  
by College  
FY 1993 and FY 2003**

AA = ARCH./ART  
 AHS = APPLIED HEALTH SCI.<sup>3</sup>  
 BA = BUSINESS ADMIN.  
 DENT = DENTISTRY  
 ED = EDUCATION  
 ENGR = ENGINEERING  
 LAS = LIBERAL ARTS & SCI.  
 NURS = NURSING  
 SW = SOCIAL WORK

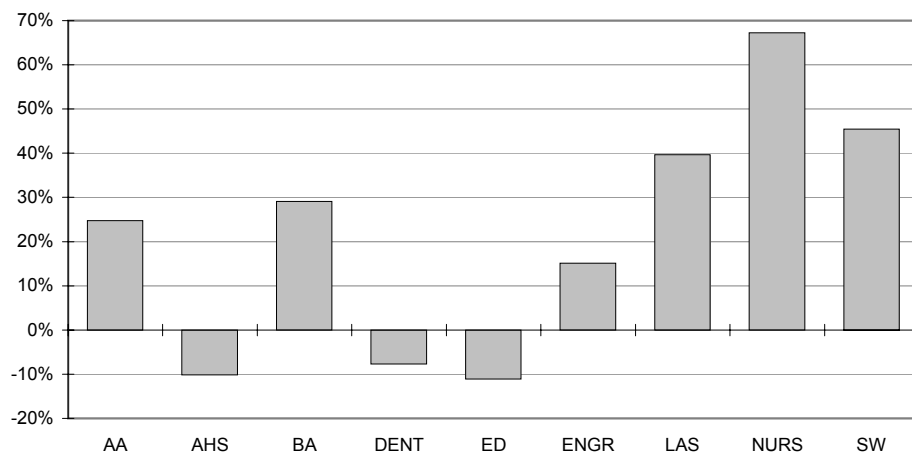


Figure 18

<sup>1</sup> In 1995, Architecture, Art, and Urban Planning changed to Architecture and the Arts. Urban Planning is now a part of Urban Policy and Public Affairs in the Graduate College.

<sup>2</sup> In order to meet changes in state requirements for teacher certification in 1992, students either accelerated studies or delayed graduation. This pattern affected the number of graduates for FY 1992 and FY 1993.

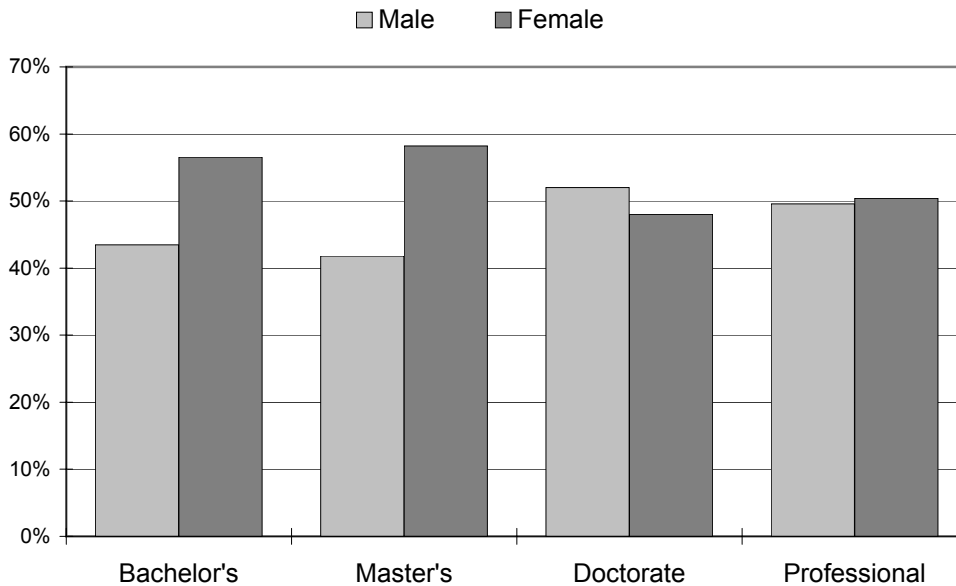
<sup>3</sup> As of 1993, Kinesiology is a part of the College of Applied Health Sciences. Effective Fall 2001, the College of Health and Human Development Sciences was changed to the College of Applied Health Sciences.

**Table 22**

**NUMBER AND PERCENT OF UIC DEGREES CONFERRED BY LEVEL BY GENDER  
FY 2003**

LEVEL	MALE		FEMALE		TOTAL	
	Number	Percent	Number	Percent	Number	Percent
Bachelor's	1,422	43.4%	1,851	56.6%	3,273	100.0%
Master's	759	41.8%	1,057	58.2%	1,816	100.0%
Doctorate	117	52.0%	108	48.0%	225	100.0%
Professional <sup>1</sup>	246	49.6%	250	50.4%	496	100.0%
<b>Campus Total</b>	<b>2,544</b>	<b>43.8%</b>	<b>3,266</b>	<b>56.2%</b>	<b>5,810</b>	<b>100.0%</b>

**Percent of UIC Degrees Conferred  
by Gender -- FY 2003**



**Figure 19**

<sup>1</sup> Professional degrees include medicine, dentistry, pharmacy, and advanced certificates in dentistry.  
DATA SOURCE: 2003, Research Data Base: UOAPA

**Table 23****NUMBER OF UIC DEGREES CONFERRED BY RACE/ETHNICITY  
FY 2003**

<u>LEVEL</u>	<u>Am. Ind./ Alask.Nat.</u>	<u>Asian/ Pac. Isl.</u>	<u>Black</u>	<u>Hispanic</u>	<u>White</u>	<u>Int'l</u>	<u>Unknown</u>	<u>Total</u>
Bachelor's	7	738	244	491	1,600	77	116	3,273
Master's	3	109	138	99	780	615	72	1,816
Doctorate	0	13	17	6	87	94	8	225
Professional <sup>1</sup>	3	175	34	38	227	9	10	496
<b>Campus Total</b>	<b>13</b>	<b>1,035</b>	<b>433</b>	<b>634</b>	<b>2,694</b>	<b>795</b>	<b>206</b>	<b>5,810</b>

**Table 23.1****PERCENT OF UIC DEGREES CONFERRED BY RACE/ETHNICITY  
FY 2003**

<u>LEVEL</u>	<u>Am. Ind./ Alask.Nat.</u>	<u>Asian/ Pac. Isl.</u>	<u>Black</u>	<u>Hispanic</u>	<u>White</u>	<u>Int'l</u>	<u>Unknown</u>	<u>Total</u>
Bachelor's	0.2%	22.5%	7.5%	15.0%	48.9%	2.4%	3.5%	100.0%
Master's	0.0%	5.8%	7.6%	2.7%	38.7%	41.8%	3.6%	100.0%
Doctorate	0.2%	6.0%	7.6%	5.5%	43.0%	33.9%	4.0%	100.0%
Professional <sup>1</sup>	0.6%	35.3%	6.9%	7.7%	45.8%	1.8%	2.0%	100.0%
<b>Campus Total</b>	<b>0.2%</b>	<b>17.8%</b>	<b>7.5%</b>	<b>10.9%</b>	<b>46.4%</b>	<b>13.7%</b>	<b>3.5%</b>	<b>100.0%</b>

<sup>1</sup> Professional degrees include medicine, dentistry, pharmacy, and advanced certificates in dentistry.

Note: Totals may not equal 100.0% due to rounding.

DATA SOURCE: 2003, Research Data Base: UOAPA