

University of Illinois Federal Grants and Contracts



**University Offices
of Governmental Relations *and*
Planning & Budgeting
April 2011**

UNIVERSITY OF ILLINOIS
URBANA-CHAMPAIGN • CHICAGO • SPRINGFIELD



Urbana-Champaign



Chicago



Springfield

This report illustrates the level of support by agency from federal grants and contracts received at the University of Illinois during FY2010. Information for the graphs was obtained from the SCT Banner system records and represents actual expenditures. Graphs depict federal grants and contracts awarded for research, public service, instruction and/or administrative costs associated with the operation of the University.

Text courtesy of the University of Illinois Office for University Relations. Photos courtesy of the News Bureaus on each campus and the Office of University Relations. Photo on Page 2 courtesy of Chris Brown. 04/2011 150.

UNIVERSITY OF ILLINOIS

URBANA-CHAMPAIGN • CHICAGO • SPRINGFIELD

Research distinguishes an elite group of 60 or so American universities from the rest of the country's 3,500 colleges and universities. The University of Illinois' three campuses in Urbana-Champaign, Chicago and Springfield have outstanding research programs in the sciences, agriculture, engineering and computing, business, medicine, law, education, political science and library science, among others.

In addition to its three physical campuses, the University of Illinois has two regional medical college sites that also host graduate programs in pharmacy and nursing and scores of Extension and statewide programming offices across Illinois. With almost 77,000 students, the University of Illinois relies on federal assistance in the form of scholarships to provide access to students who can benefit from its high-quality education programs. Over 10 percent, or more than \$78 million, of federal grant and contract expenditures at the University in FY 2010 went to scholarships for students.

Federal funding helps make possible intellectual, scientific and technological advances of the nation and provides training of the next generation of researchers and scholars. A core component of the university-based national research model is the potential for economic impact—a healthy return on investment.

New discoveries in a university setting begin an evolutionary process that starts with new ideas and ends with new products, companies and industries. Ultimately, these activities result in economic growth and development. For example, iCyt Mission Technology, founded in 1995, designs, manufactures and sells flow cytometers, associated reagents and services. Located in the Urbana campus Research Park with about 30 staff, iCyt was purchased by Sony in early 2010.

This annual report, *University of Illinois Federal Grants and Contracts*, offers examples of projects that are supported by federal agencies and provides information on federal grants and contracts funding received at the University of Illinois during the last fiscal year.

Federal grants provide essential support to the University of Illinois' core missions of education, research, public service and economic development. We hope the report increases appreciation of the University's role in advancing science, technology and increased economic competitiveness in the global economy to the state and nation's advantage.

Kappy Laing
*Executive Director
of Governmental Relations*
(217) 333-1086

W. Randall Kangas
*Associate Vice President
for Planning and Budgeting*
(217) 333-6600

The University of Illinois is known around the globe for innovative and significant research. The federal government—on behalf of the people of the United States—is the University’s main partner in discovery.

Each year, University of Illinois faculty scholars and researchers attract thousands of separate grants and contracts that range from tens of thousands of dollars to multi-year, multi-million dollar projects. They help keep the United States at the leading edge of knowledge development and technology transfer.

Total federal grants and contracts expenditures now top \$719 million annually on the three campuses of the University of Illinois. The Urbana-Champaign campus, well known for its computing, engineering, science and agricultural research, attracts more than \$397 million in federal support. The Chicago campus attracts more than \$314 million. Because of its strong medical and health care research programs, more than 65 percent of support to the Chicago campus comes from the **National Institutes of Health**. The Springfield campus attracts more than \$7.8 million in support, primarily from the **U.S. Department of Education**.

The numbers are compelling:

- In FY 2010, the last year reported, 75 percent of all federal grants and contracts to the University of Illinois were for research.
- In the state of Illinois there are four research-intensive universities that are among the top 100 nationally in Total R&D Expenditures: No. 1, University of Illinois at Urbana-Champaign (27th nationally); No. 2, Northwestern University (30th nationally); No. 3, University of Chicago (48th nationally); and No. 4, University of Illinois at Chicago (57th nationally).
- The budget category called “gifts, grants and contracts” has grown as a fraction of the University of Illinois’ day-to-day operations since FY 1980, increasing from 21 percent of the budget to 29 percent, while state-tax support has declined from 47 percent to about 18 percent.

Research at Illinois is frequently interdisciplinary. The University of Illinois at Urbana-Champaign has two major facilities dedicated to interdisciplinary research: The Beckman Institute for Advanced Science and Technology and the Institute for Genomic Biology. For more than 20 years, the Beckman Institute has been home to interdisciplinary research in biological intelligence, human-computer interaction, integrative imaging and molecular and electronic nanostructures. The Institute for Genomic Biology, established in 2003, has taken an interdisciplinary approach to nine research themes in three program areas: systems biology, cellular and metabolic engineering, and genome technology. National grantors for researchers at both institutes include the **National Science Foundation**, **National Institutes of Health**, the **National Institute on Aging** and the **U.S. Department of Agriculture**.

Research at Illinois is also international and inter-institutional. A University of Illinois at Chicago study funded by the **National Cancer Institute**, part of the **U.S. National Institutes of Health**, showed that black raspberries are highly effective in preventing colorectal tumors in mouse models. Research collaborators are at Ohio State University and Wuhan University in China.

What follows is a small sample of the exciting and groundbreaking research being conducted at the University of Illinois. Charts and graphs explaining financial and budget information for the fiscal year ending June 30, 2010, are also included.

Coming Soon: Blue Waters

Computational scientists will create breakthroughs in nearly all fields of science using Blue Waters, the **National Science Foundation** (NSF) funded supercomputer being developed at the National Center for Supercomputing Applications (NCSA) on the University of Illinois at Urbana-Champaign campus. Blue Waters is expected to be one of the most powerful supercomputers in the world, with an anticipated peak performance of 10 petaflops (10 quadrillion calculations every second) and with sustained performance of 1 petaflop. The system will run a range of science and engineering codes.



The state-of-the-art 88,000 square foot National Petascale Computing Facility in Champaign will house Blue Waters as well as other computing, networking and data systems. The facility, constructed with \$72 million in funds from the state of Illinois and the University, opened in 2010.

Blue Waters is a joint effort of the University of Illinois and NCSA, IBM, and the Great Lakes Consortium for Petascale Computation. **NSF**, which awarded the University \$200+ million in 2007, is currently soliciting proposals from academic and government investigators as well as industry researchers who are interested in a petascale allocation on the system.

Urbana center integrates human, animal, environmental health

The Center for One Health Illinois, established on the University of Illinois at Urbana-Champaign campus in 2009 with a \$250,000 grant from the **U.S. Department of Agriculture (USDA)**, will receive another \$500,000 in grants over several years from the **USDA** to pursue its mission of fostering collaborations and the free flow of information among individuals in the fields of medicine, public health, the environment and agriculture. The center has three areas of engagement: educating a new cadre of cross-trained public health practitioners, working with public health agencies to improve disease surveillance and fostering collaborative research.



John Herrmann led the effort to create the Center for One Health Illinois, which is tackling the gap between human diseases reported to local and state health departments and agricultural reports submitted to agricultural officials by veterinarians. Center collaborators are recruiting experts to build a system for sharing the environmental and health data. At a conference in 2010, potential partners discussed the challenges and ultimately created a demonstration project to develop an integrated surveillance system. The project involves experts at the local health department and the National Center for Supercomputing Applications and the College of Veterinary Medicine, both on the Urbana-Champaign campus.

Online assessment of student understanding

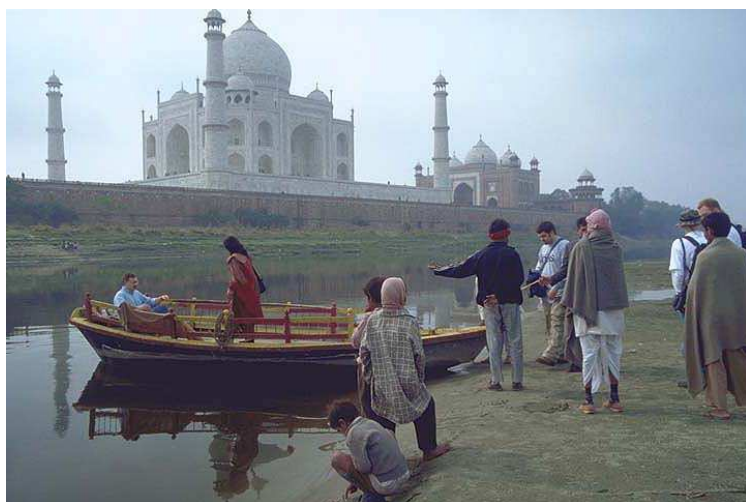
A new multi-year, \$1.8 million study funded by the **U.S. Department of Education** will examine online assessments to help teachers diagnose student understanding of science subjects. Louis DiBello, a research professor of learning sciences, leads the University of Illinois at Chicago team that will investigate middle and high school science classes through an analysis of existing assessment tools that focus on students' conceptual understanding. Based on their analyses, the Learning Sciences Research Institute researchers will refine the existing assessment and develop and test the modified and new materials. Data to be collected include students' responses on the assessments, classroom observations and interviews with students.



Urbana resource centers supported

Six centers on the University of Illinois at Urbana-Champaign campus dealing with international areas and issues were awarded \$14.7 million in federal grants to continue their programs through the current and next three academic years (2010-2014). The centers support international curricula, library collections and conferences, and provide outreach to local and regional K-12 educators related to their world region. Hundreds of faculty members from departments across the Urbana-Champaign campus are affiliated with one or more of the centers.

The six Title VI grants, awarded by the **U.S. Department of Education**, are funding five campus centers designated as National Resource Centers – East Asian Studies; Latin American and Caribbean Studies; Global Studies; Russian, East European and Eurasian Studies; European Union Studies – as well as the Center for International Business Education and Research.



The grants include funding for foreign language and area studies fellowships, which support graduate and undergraduate study in modern foreign languages in combination with area or international studies. In addition to languages such as Spanish, French, and German, these fellowships can cover costs for learning what are designated as “less commonly taught languages,” such as Korean, Hindi, and Turkish.

Evaluating dietary supplements

With the rising popularity of botanical dietary supplements, the safety of the products has been questioned by consumer advocates and government officials. In 2009, a Government Accountability Office report said the **U.S. Food and Drug Administration** should take actions to improve oversight and consumer understanding of dietary supplements.

Researchers in the University of Illinois at Chicago College of Pharmacy were awarded a \$7.4 million five-year grant to research the efficacy of black cohosh, licorice and hops on menopausal symptoms. The research is funded by the Office of Dietary Supplements and the National Center for Complementary and Alternative Medicine, two of the National Institutes of Health. University of Illinois at Chicago's Center for Botanical Dietary Supplements is the longest continuously operated center funded by the Office of Dietary Supplements.



Transforming dental research facility

The University of Illinois at Chicago College of Dentistry received a \$10 million federal grant to transform its research facilities into a state-of-the-art clinical and translational research center. The construction will utilize green and sustainable materials.

The grant, part of the American Reinvestment and Recovery Act obtained through the **National Institutes of Health**, is being used to construct a clinical research center, create core facilities, and refurbish the remaining 23,000 square feet of laboratory space that was not completed in an earlier construction phase. The project will also feature shared facilities to be used by research faculty, students, and staff. Core equipment and rooms with ultra-cold freezers wired to the college's backup generator will also serve researchers. The new laboratory space will be used by faculty members in periodontics, oral medicine and diagnostic sciences, oral biology, restorative dentistry and the Center for Molecular Biology of Oral Diseases.



Researchers who will benefit from the construction work in a range of interdisciplinary areas including tissue engineering, wound healing, developmental biology, oral cancer biology, proteomics, epidemiology and behavioral research. The new clinical research center will include

studies of patient populations with periodontal diseases and oral pathologies and the impact of nutrition and systemic diseases on oral health, including oral inflammation, implants, wound healing, and surgical outcomes.

Weatherization training center

A program that helps low-income residents save money and fuel by improving their homes' energy efficiency will receive a nearly \$1 million grant to establish one of the first weatherization training centers in the state. Funded through the federal American Recovery and Reinvestment Act, the grant, part of a \$29 million nationwide program sponsored by the **U.S. Department of Energy**, will establish a training center on the Urbana-Champaign campus for the Illinois Home Weatherization Assistance Program.

The program, administered by the Building Research Council (BRC), trains and certifies assessors and other agency staff members from 35 local community action agencies throughout the state who perform weatherization work such as insulation, air sealing, and cleaning, repairing and replacing furnaces on qualifying residences.

The program also has been developing a one-week curriculum for training and certifying contractors who work in the program. The new funding will enable the BRC to expand the program's training and outreach by preparing instructors at Illinois' community colleges to teach the one-week energy efficiency curricula for program contractors.

Mentoring Latino students

Latino faculty members in the College of Agricultural, Consumer and Environmental Sciences on the Urbana campus will be mentoring the next generation of Latino scientists through a grant from the **National Science Foundation's** Undergraduate Research and Mentoring program. Students will receive \$15,000 fellowships for their research and academic work for one year to study a topic of their choice, including plant and animal bioinformatics, quantitative genetics and plant breeding, statistical genomics, architecture of complex traits, food nanotechnology, biological system modeling and statistics for agriculture.

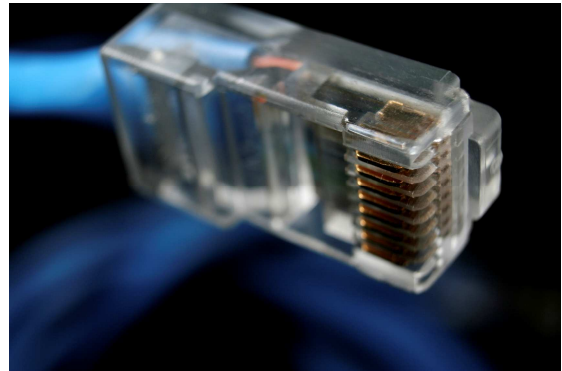


The \$663,000 grant will establish a program titled "New Biology Fellows" that will focus on mentoring Latino undergraduate students. Four cohorts of fellows will receive one-year research experiences in quantitative biology and informatics starting in the summer of 2011 and continuing through 2015. Each cohort consists of seven college sophomore and junior students who have completed at least one introductory biology and one introductory math course from a Hispanic-serving institution in Illinois.

Moving to the fast lane

A \$1.2 million **National Science Foundation** funded project will upgrade University of Illinois at Chicago's connection to a switching facility that provides access to the world's hyper-fast high-performance research networks. Incus, the project name for the new University of Illinois at Chicago campus facility, will connect Chicago campus researchers to prime data networks at speeds approaching 100 gigabits a second. At present, best speeds are only about 10 gigabits.

Lead investigator Robert Grossman, director of the University of Illinois at Chicago-based Laboratory for Advanced Computing/National Center for Data Mining, and other researchers will test protocols for moving large datasets over such fast networks, to see if current architecture used for wide area data clouds works for these networks.



The project will also upgrade connections between the east and west campuses with multiple 10 gigabits per second paths. Equipment installation and testing is expected to begin sometime during the 2011 summer.

The NSF award is funded under the American Recovery and Reinvestment Act of 2009.

Human-machine interactions

Researchers at the Coordinated Science Lab (CSL) on the Urbana-Champaign campus received a \$7.5 million **Department of Defense** Multidisciplinary University Research Initiative (MURI) award in 2010 to form a better understanding of how teams of humans and machines make decisions and develop more reliable and secure multilayer networks where team interactions take place. The **Air Force Office of Scientific Research** is funding the project for five years.

The project, under the direction of Tamer Basar, a professor of electrical and computer engineering, emphasizes the study of communication and information acquisition and exchange between agents of different types in an adversarial environment, such as the battlefield. It is expected to have a dramatic impact on the most critical issues of inference: decision making and overall situational awareness.



Basar says that the country's national security and economic health depends on its ability to provide robust, timely, and accurate responses to challenges that arise in complex networked environments where humans and machines with varying capabilities and intents interact. He notes the collaborative project, which includes researchers from Georgia Tech, Stanford, UC-Berkeley and The University of Maryland, addresses that need.

Securing electronic health records

The Urbana campus' Information Trust Institute (ITI) is leading a multi-university consortium of researchers who intend to make the technologies involved in electronic health records, health information exchange and telemedicine trustworthy enough to earn the confidence of doctors and patients.

With a \$15 million research award from the **U.S. Department of Health and Human Services**, SHARPS, the Strategic Healthcare Information Technology Advanced Research Projects on Security, will support work by 20 senior researchers at the University of Illinois and 11 universities and hospital across the country, including the University of California at Berkeley, Dartmouth College, Harvard Medical School, Johns Hopkins University, Northwestern Memorial Hospital and Stanford University.

Under the direction of the program's lead investigator, Carl A. Gunter, a professor in the Department of Computer Science and ITI, SHARPS will focus on three health information environments -- electronic health records, health information exchange and telemedicine -- that are becoming increasingly popular in spite of security concerns with their use.



Electronic health records, although already prevalent in most U.S. hospitals, are subject to risks that paper records are not, such as the physical ease with which a thief can carry away thousands of patients' records on a USB stick in his pocket. In addition, electronic records are vulnerable to Internet-based attacks if they are put online to increase accessibility.

Family medicine expansion

The University of Illinois at Chicago College of Medicine is expanding its family medicine residency program using a nearly \$2 million grant from the **U.S. Department of Health and Human Services**. The grant will fund two additional family medicine residents each year for five years beginning in 2011. The department currently has six residents in each of the three training years.



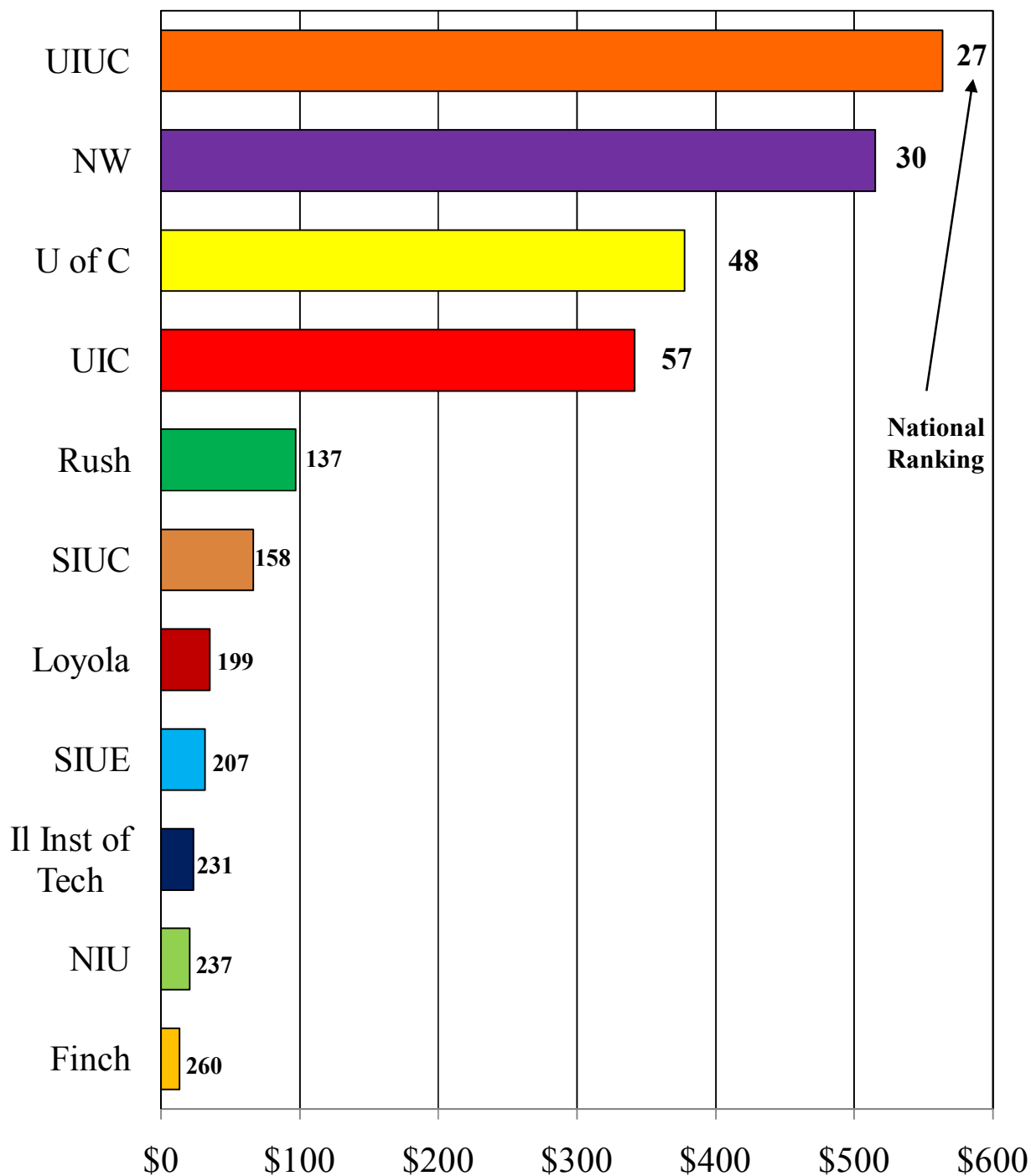
The grant from the Health Resources and Services Administration will be used to enhance teaching in health communication, health literacy, global health and women's health, as well as expand the resident scholarship program. Principal investigator Memoona Hasnain says the goal is to train medical residents to provide high-quality, patient-centered, culturally appropriate care to all patients, particularly those who are underserved and vulnerable. Half the department's graduates over the last six years went on to practice in federally designated medically underserved areas, with 90 percent in primary care.

Appendix

1. Total Research and Development Expenditures	A-1
2. Federal Grant and Contract Expenditures by Agency—Total University	A-2
3. Federal Grant and Contract Expenditures by Function—Total University	A-3
4. Budget by Source of Funds—Total University	A-4
5. Federal Grant and Contract Expenditures by Agency—Urbana-Champaign	A-5
6. Federal Grant and Contract Expenditures by Agency—Chicago	A-6
7. Total Federal Obligations	A-7
8. Total Federal and Research & Development Obligations by Campus and System	A-8
9. Total Federal Obligations and Total R&D Obligations—Urbana-Champaign	A-9, A-10
10. Total Federal Obligations and Total R&D Obligations—Chicago	A-11, A-12
11. Total Federal Obligations and Total R&D Obligations—Total System	A-13, A-14

Total R & D Expenditures FY 2009

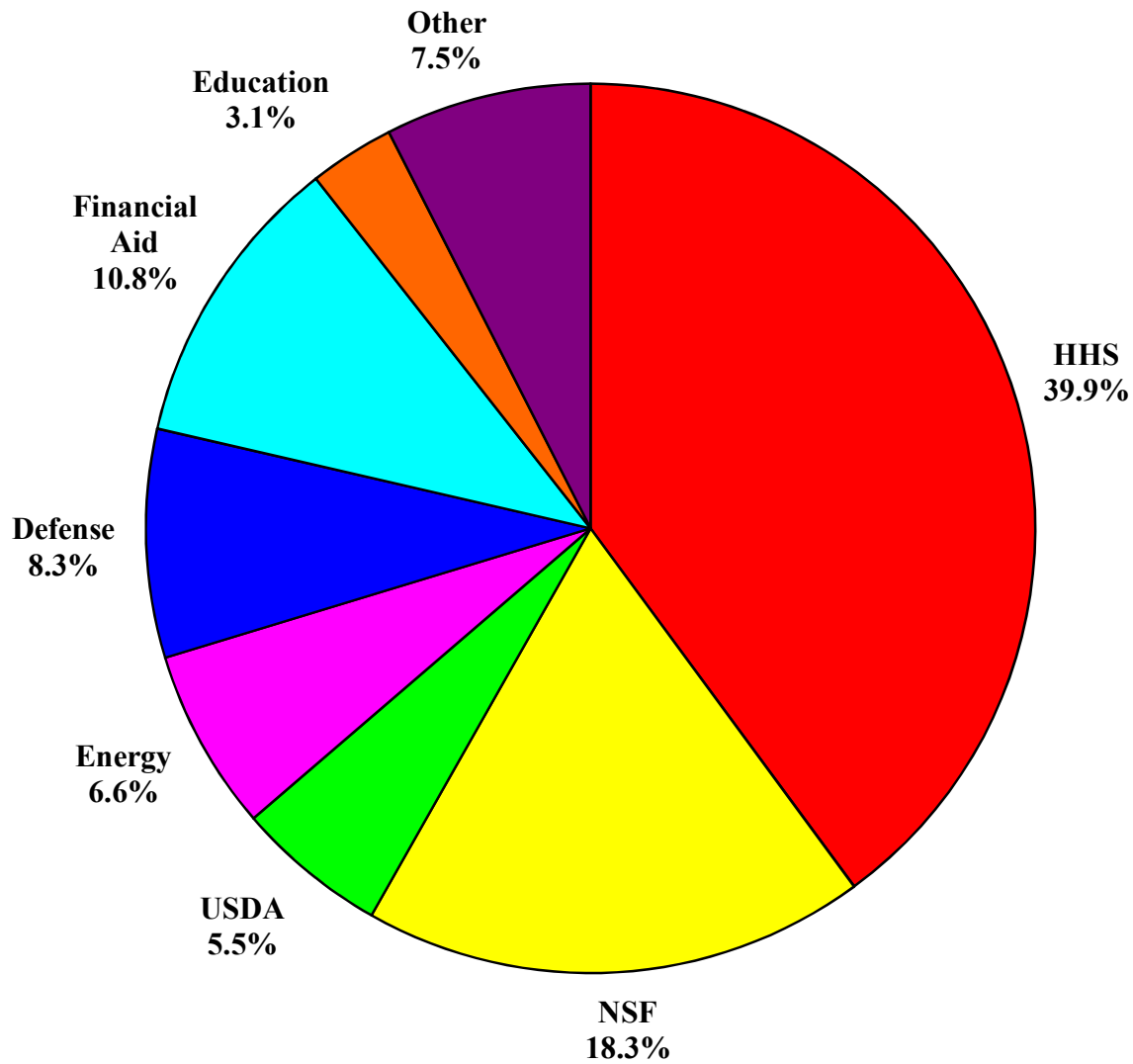
(All Sources of Funds, Dollars in Millions)



Note: Graph includes only public and private institutions in Illinois with more than \$10 million in expenditures.

Source: NSF

Federal Grant and Contract Expenditures By Agency Total University FY 2010



\$719 Million

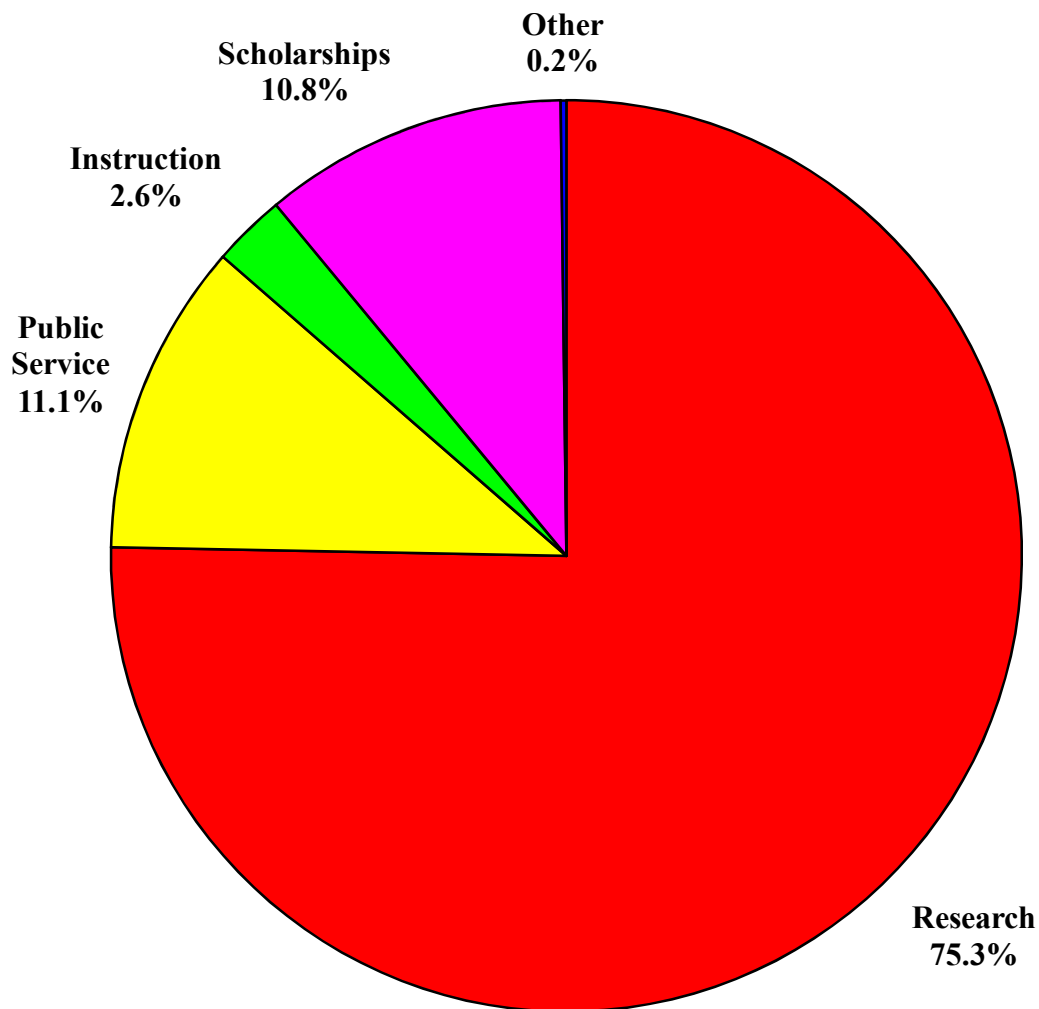


Health and Human Services and the National Science Foundation combined were over 58% of the total federal grant and contract expenditures in FY 2010.

Source: University Grants & Contracts SEFA data.

Includes Federal funds passed through from other entities. Excludes State Fiscal Stabilization Funds and accruals.

Federal Grant and Contract Expenditures By Function Total University FY 2010



\$719 Million



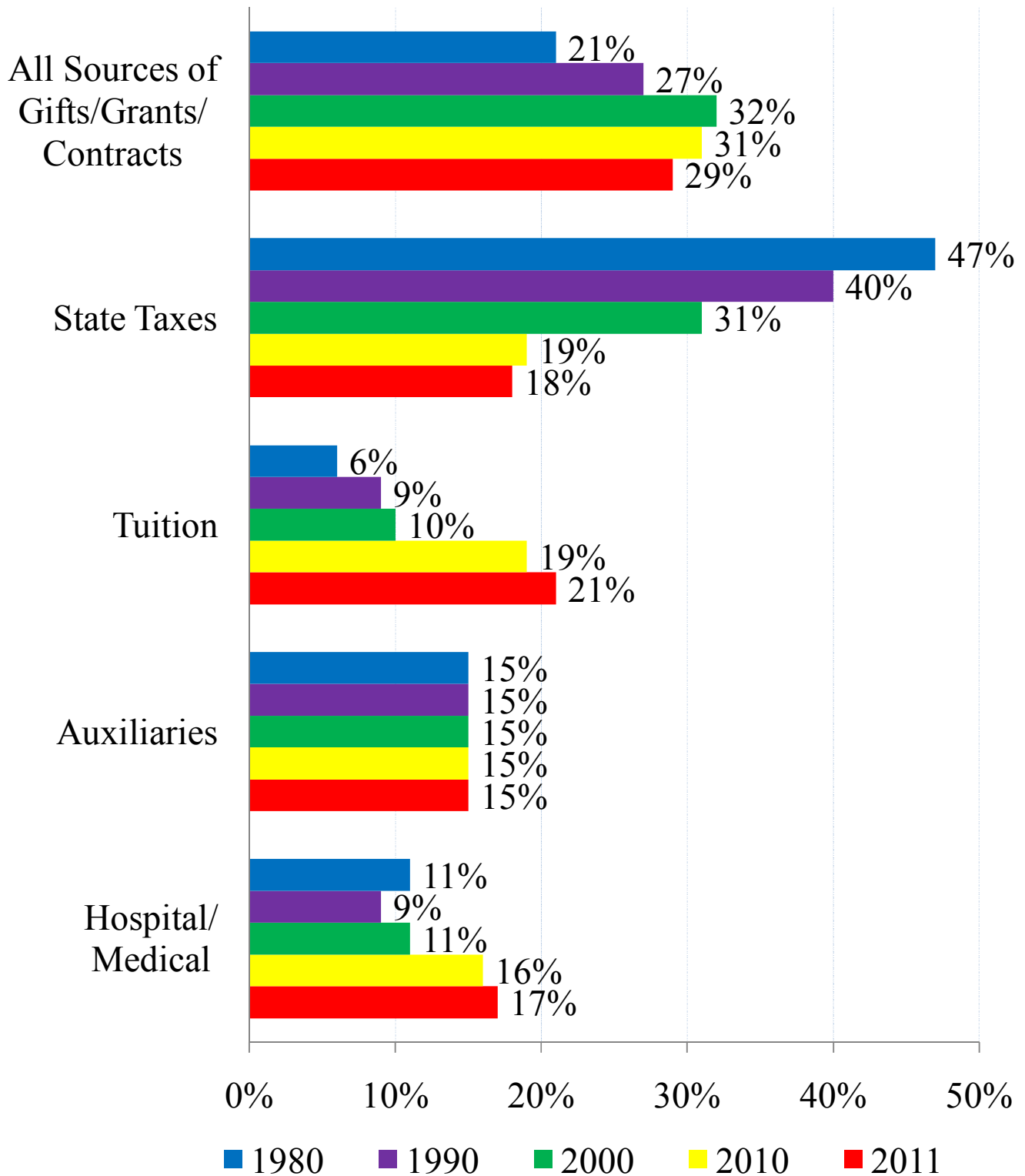
In FY 2010, over 75% of the federal grant and contract expenditures at the University of Illinois were for research.

Source: University Grants & Contracts SEFA data.

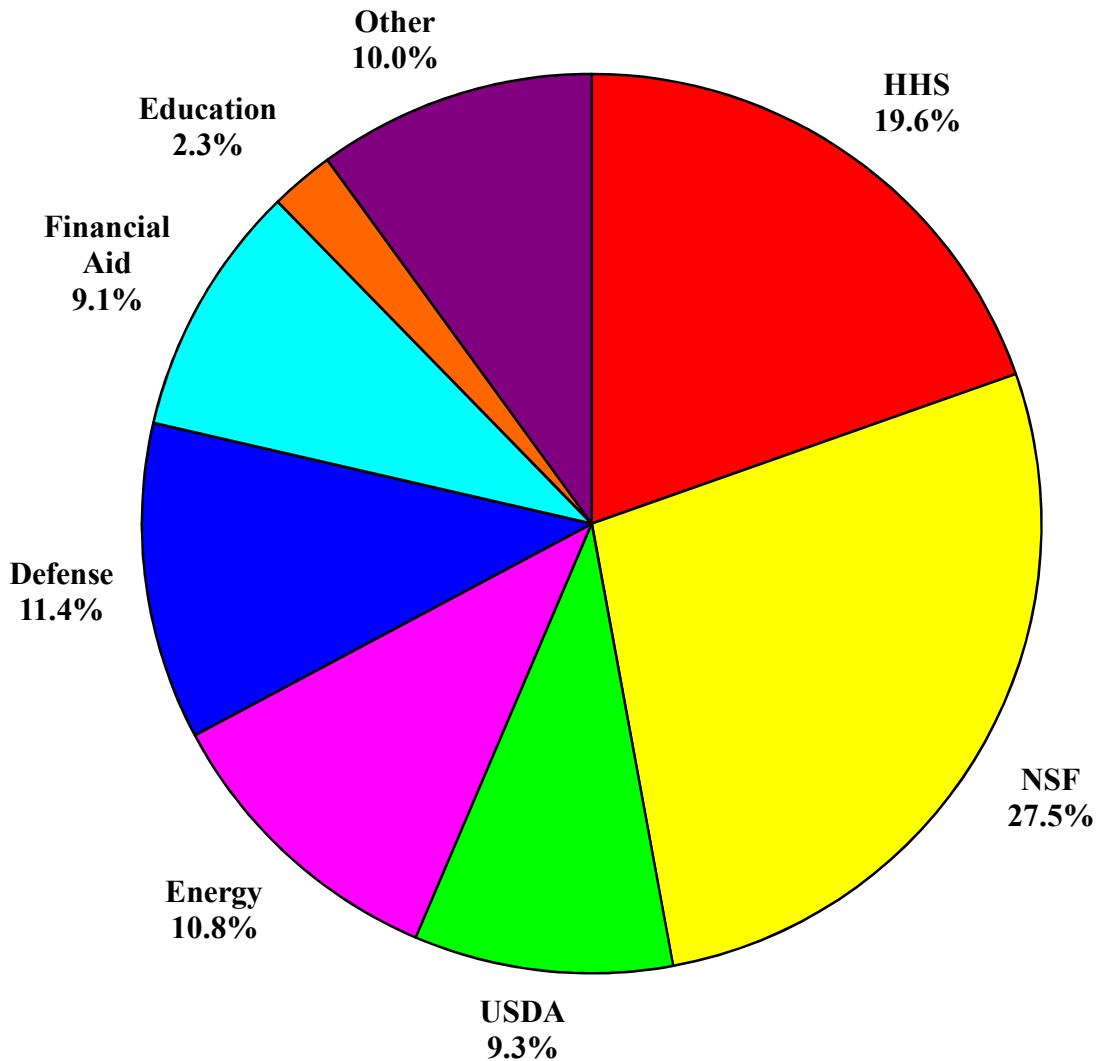
Includes Federal funds passed through from other entities. Excludes State Fiscal Stabilization Funds and accruals.

Budget By Source of Funds

Total University



Federal Grant and Contract Expenditures By Agency Urbana-Champaign Campus FY 2010



\$397 Million

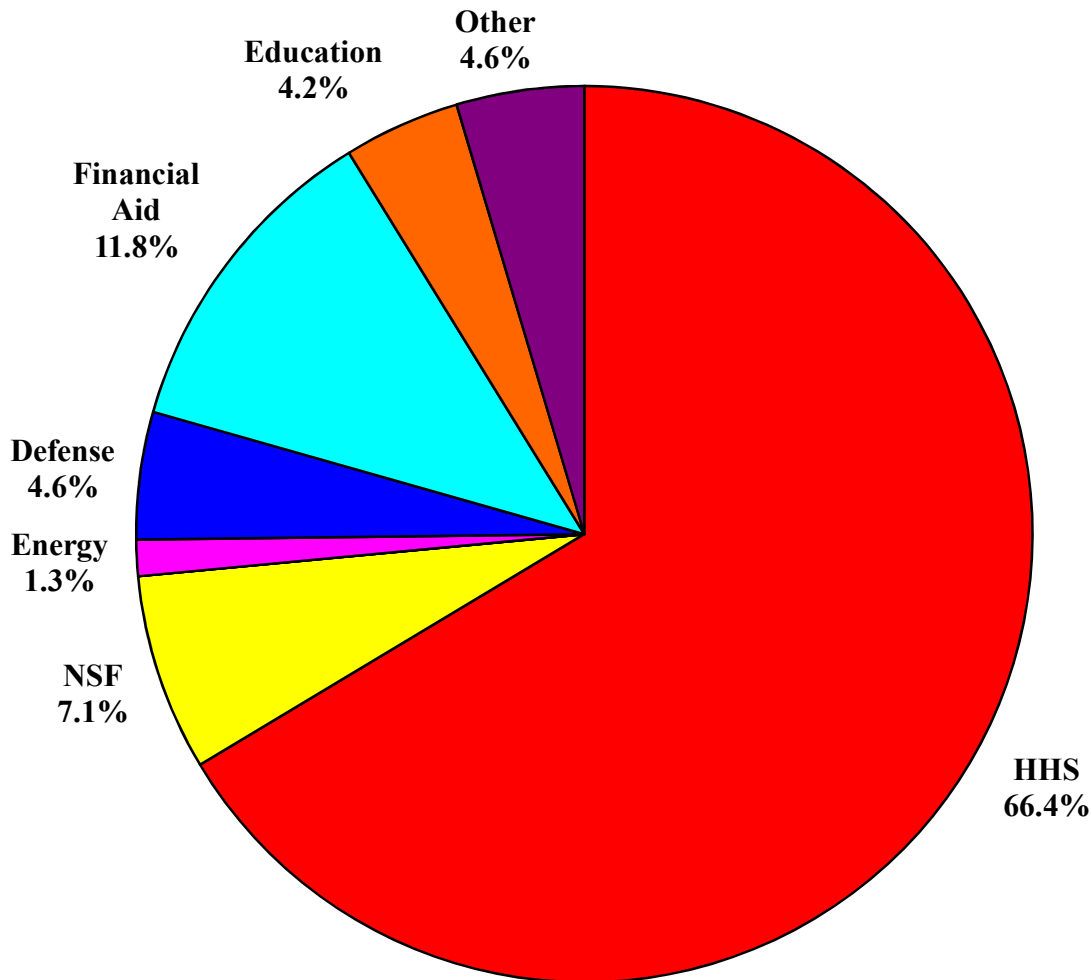


In FY 2010, nearly half of UIUC's federal grant and contract expenditures came from the National Science Foundation and Health and Human Services combined.

Source: University Grants & Contracts SEFA data.

Includes Federal funds passed through from other entities. Excludes State Fiscal Stabilization Funds and accruals.

Federal Grant and Contract Expenditures By Agency Chicago Campus FY 2010



\$314 Million



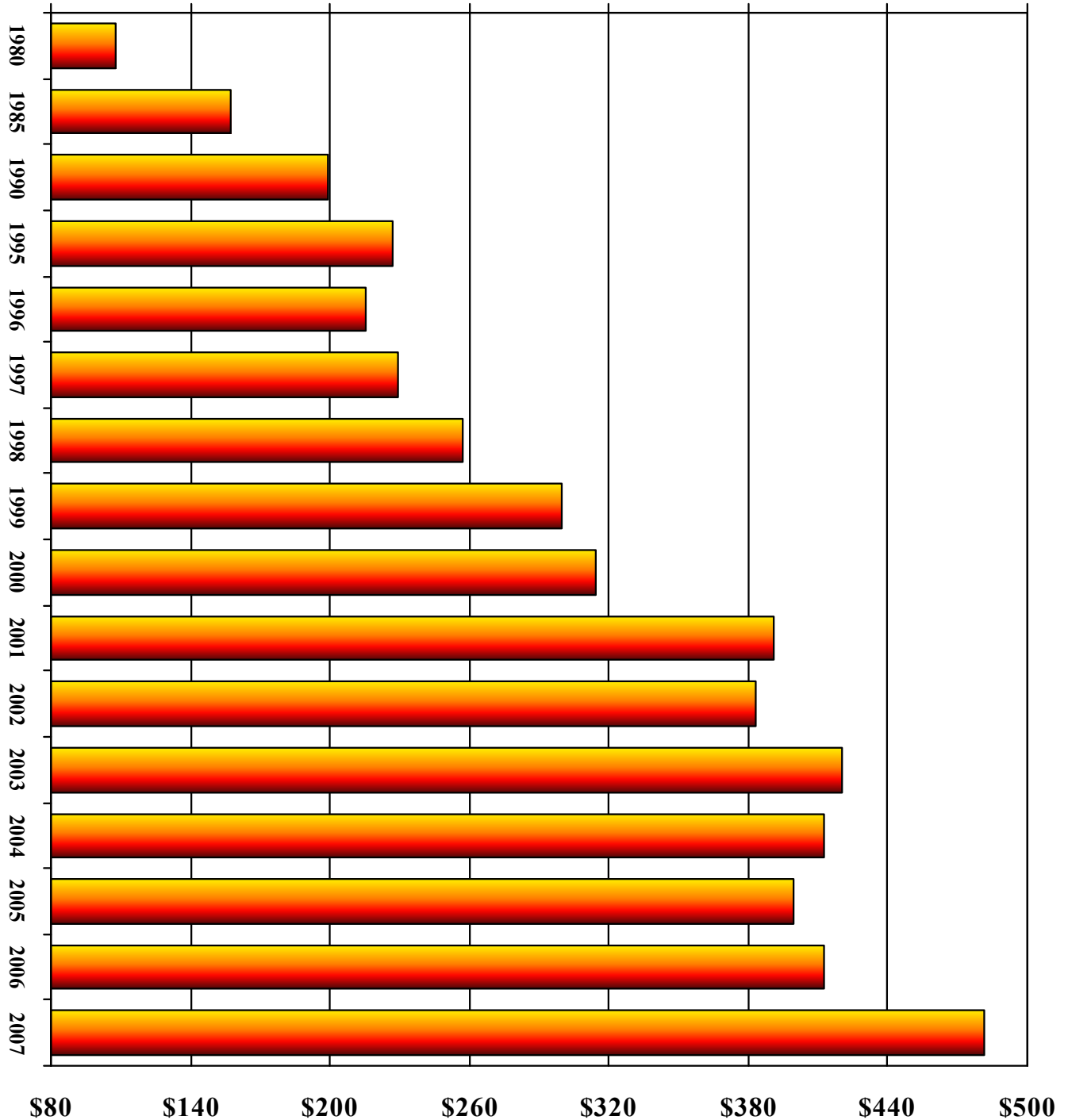
Because of UIC's large medical center, it is no surprise that Health and Human Services represents over 66% of the total federal grant and contract expenditures at UIC.

Source: University Grants & Contracts SEFA data.

Includes Federal funds passed through from other entities. Excludes State Fiscal Stabilization Funds and accruals.

University of Illinois Total Federal Obligations

(Dollars in Millions)



Obligations are the amounts for orders placed, contracts awarded, services received, and similar transactions during a given period, regardless of when the funds were appropriated and when future payment of money is required. Obligations differ from expenditures in that funds allocated by Federal agencies during one fiscal year may be spent by the recipient institution either partially or entirely during one or more subsequent years.

Source: NSF, Federal Science and Engineering Support to Universities, Colleges, and Nonprofit Institutions, FY 1980-2007.

Total Federal and Research & Development Obligations

University of Illinois By Campus and System (Dollars in Thousands)

Federal Fiscal Year		UIUC		UIC		University	U of I System ¹	
		Rank Among		Rank Among		Administration	Rank Among	
		Dollars	Institutions	Dollars	Institutions	Dollars	Dollars	Systems Only
FY 1980	Federal Obligations	\$ 68,562	19	\$ 37,297	49	\$ 1,710	\$ 107,569	8
	Research & Development	50,332	18	19,373	65	1,213	70,918	6
FY 1985	Federal Obligations	99,403	20	42,393	65	15,697	157,493	7
	Research & Development	83,122	20	28,172	65	6,324	117,618	5
FY 1990	Federal Obligations	121,180	26	60,405	61	17,221	198,806	6
	Research & Development	99,742	26	42,293	68	6,377	148,412	6
FY 1995	Federal Obligations	145,930	26	69,781	71	11,550	227,261	5
	Research & Development	115,717	28	51,428	68	10,239	177,384	6
FY 1996	Federal Obligations	143,900	27	61,552	69	10,085	215,537	6
	Research & Development	116,740	28	55,833	64	9,785	182,358	7
FY 1997	Federal Obligations	153,014	26	65,237	73	10,718	228,969	7
	Research & Development	125,787	26	58,852	68	10,235	194,874	7
FY 1998	Federal Obligations	164,211	26	81,907	61	10,672	256,790	6
	Research & Development	130,932	27	72,160	62	9,110	212,202	7
FY 1999	Federal Obligations	182,695	24	103,887	54	13,447	300,029	4
	Research & Development	145,477	29	91,374	55	11,768	248,619	6
FY 2000	Federal Obligations	189,713	26	111,829	54	12,480	314,022	7
	Research & Development	156,050	29	99,629	52	11,614	267,293	7
FY 2001	Federal Obligations	238,308	25	137,062	51	15,375	390,745	5
	Research & Development	186,931	27	122,061	50	13,464	322,456	5
FY 2002	Federal Obligations	220,124	28	146,861	50	15,871	382,856	7
	Research & Development	194,013	28	135,075	49	13,856	342,944	6
FY 2003	Federal Obligations	242,985	28	156,138	51	21,193	420,316	7
	Research & Development	205,931	29	145,817	50	19,170	370,918	6
FY 2004	Federal Obligations	230,697	31	164,479	50	17,103	412,279	7
	Research & Development	198,224	37	148,350	53	15,048	361,622	7
FY 2005	Federal Obligations	209,604	38	172,668	48	17,355	399,627	8
	Research & Development	188,275	38	158,342	49	16,338	362,955	8
FY 2006	Federal Obligations	213,946	37	182,528	45	15,878	412,352	8
	Research & Development	185,620	40	166,654	48	13,784	366,058	8
FY 2007	Federal Obligations	270,675	26	188,891	48	21,556	481,122	6
	Research & Development	210,499	36	172,492	47	17,850	400,841	6

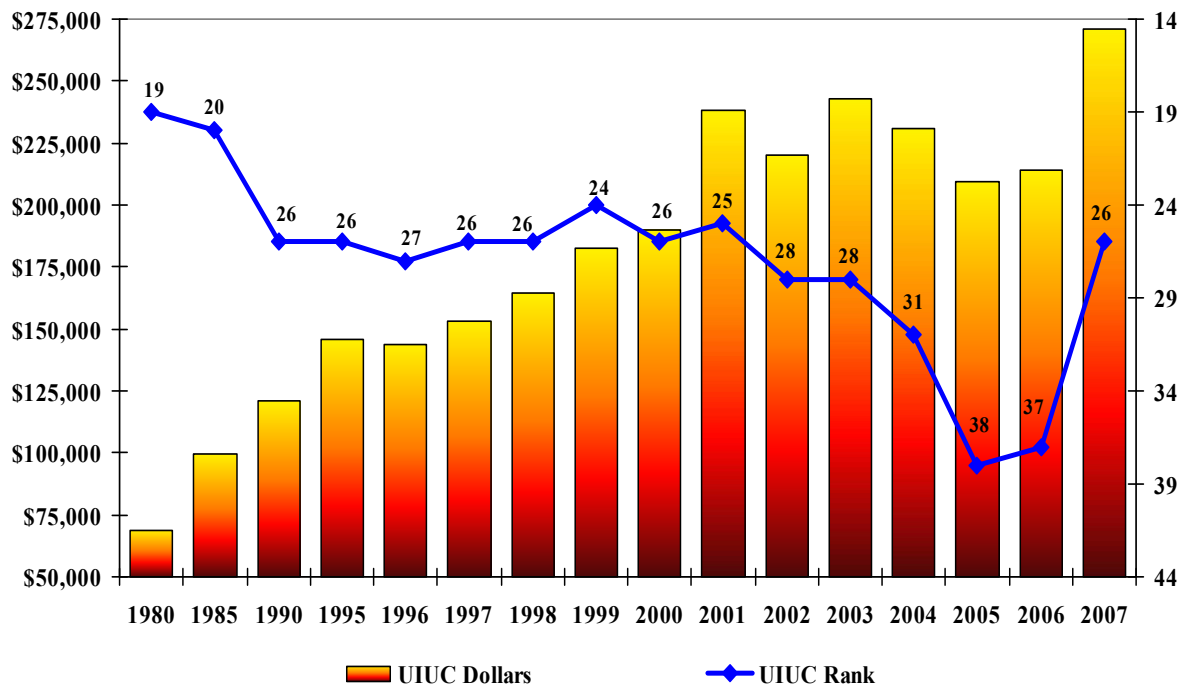
^[1] Rankings include only systems of universities and colleges; single institutions are not included in this comparison.

Source: National Science Foundation, Federal Science and Engineering Support to Universities, Colleges, and Nonprofit Institutions, FY 1980-2007.

University of Illinois at Urbana-Champaign

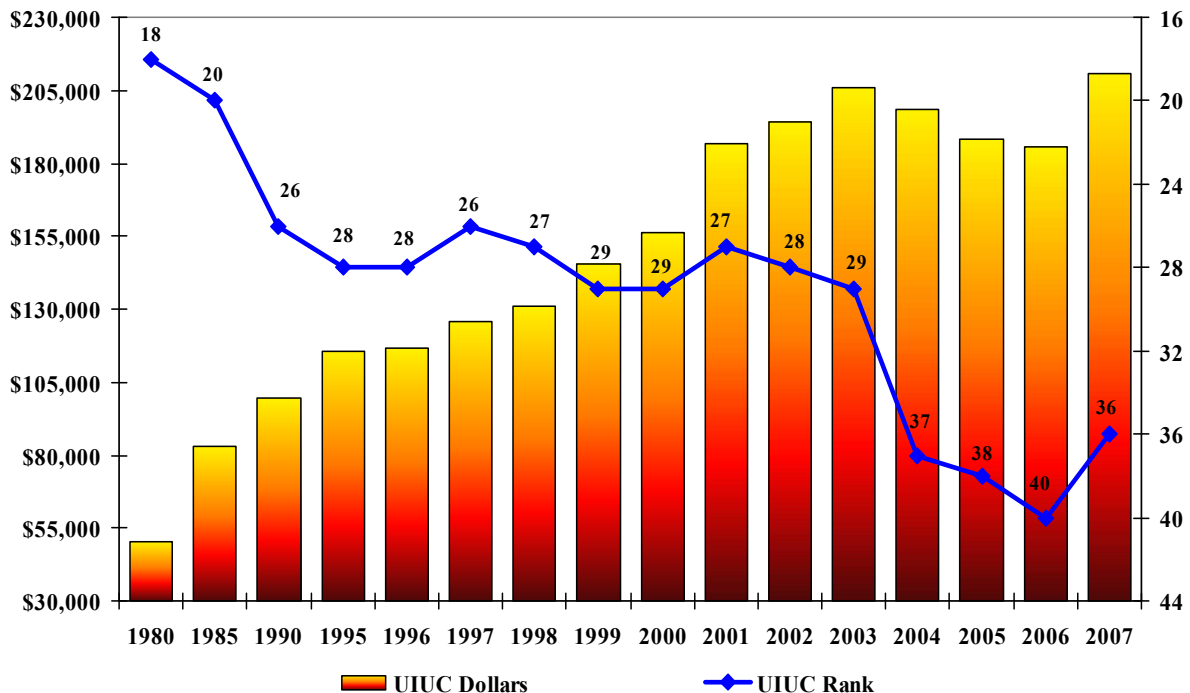
Total Federal Obligations

(Dollars in Thousands)



Federal Obligations For Research and Development

(Dollars in Thousands)



Source: NSF, Federal Support to Universities, Colleges, and Nonprofit Institutions, FY 1980-2007.

University of Illinois at Urbana-Champaign
Total Federal Obligations
By Agency
(Dollars in Thousands)

Fiscal Year	National Rank	Total Dollars	USDA	DOC	DOD	ED	DOE	EPA	HHS	NASA	NSF	OTHER ¹
1980	19	\$ 68,562	\$ 13,027	\$ 23	\$ 6,828	\$ 8,774	\$ 5,949	\$ 1,161	\$ 12,012	\$ 1,253	\$ 17,676	\$ 1,859
1985	20	99,403	17,914	59	10,764	843	10,070	1,777	17,891	2,848	34,063	3,174
1990	26	121,180	19,654	0	14,988	459	12,623	810	18,548	4,003	48,814	1,281
1995	26	145,930	23,269	487	23,118	1,890	2,571	875	27,310	4,989	59,314	2,107
1996	27	143,900	20,450	273	23,839	2,211	2,759	632	29,469	4,977	58,387	903
1997	26	153,014	21,913	1,031	24,903	1,334	3,047	2,856	31,729	5,303	59,327	1,571
1998	26	164,211	23,198	282	24,082	1,096	3,435	2,571	30,545	4,609	72,396	1,997
1999	24	182,695	23,635	117	26,978	517	4,965	1,142	34,213	5,269	83,269	2,590
2000	26	189,713	29,727	41	21,535	0	4,279	670	37,587	4,048	88,458	3,368
2001	25	238,308	29,337	0	25,529	0	7,537	1,378	43,019	5,284	122,060	4,164
2002	28	220,124	26,427	0	24,964	0	6,085	0	45,498	6,197	107,368	3,585
2003	28	242,985	27,762	0	26,056	0	6,199	3,254	51,931	6,720	116,344	4,719
2004	31	230,697	28,349	0	17,796	0	7,879	0	57,037	5,947	109,092	4,597
2005	38	209,604	27,561	0	23,803	0	6,732	0	59,311	1,554	89,307	1,336
2006	37	213,946	34,216	0	27,769	0	5,447	0	57,422	3,341	83,630	2,121
2007	26	270,675	36,756	3	31,757	0	13,348	0	65,687	1,489	119,840	1,795

Federal Obligations For Research & Development
By Agency
(Dollars in Thousands)

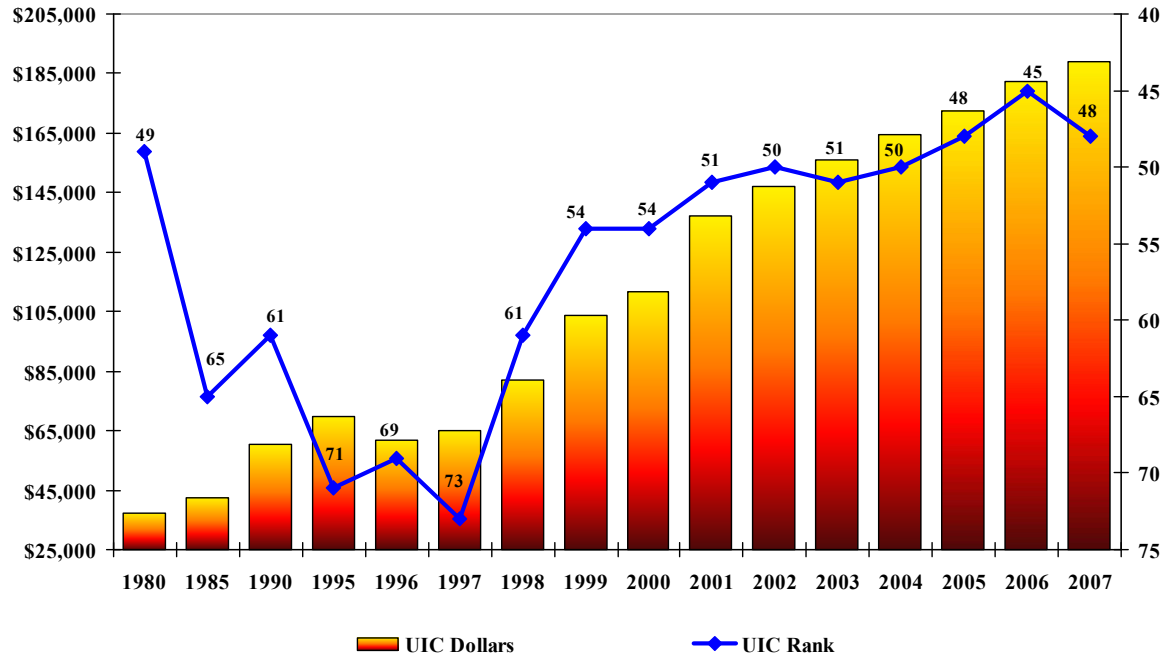
Fiscal Year	National Rank	Total Dollars	USDA	DOC	DOD	ED	DOE	EPA	HHS	NASA	NSF	OTHER ¹
1980	18	\$ 50,332	\$ 5,105	\$ 0	\$ 6,828	\$ 2,086	\$ 5,680	\$ 1,152	\$ 9,933	\$ 1,253	\$ 16,611	\$ 1,684
1985	20	83,122	6,598	59	10,064	0	9,885	1,769	15,593	2,848	33,167	3,139
1990	26	99,742	7,268	0	14,988	0	12,380	810	16,979	3,923	42,113	1,281
1995	28	115,717	10,749	97	22,046	175	2,447	875	25,379	4,105	48,051	1,793
1996	28	116,740	8,352	273	23,137	158	2,759	570	27,701	4,263	48,825	702
1997	26	125,787	9,982	1,031	24,348	0	3,047	2,843	29,357	4,662	49,068	1,449
1998	27	130,932	11,249	282	21,869	305	3,435	2,542	28,531	3,911	56,811	1,997
1999	29	145,477	11,664	117	25,699	305	4,965	1,015	31,210	4,596	63,316	2,590
2000	29	156,050	15,967	41	21,405	0	4,279	483	34,350	3,394	72,763	3,368
2001	27	186,931	15,410	0	25,360	0	7,537	861	38,496	4,690	90,413	4,164
2002	28	194,013	13,812	0	24,498	0	6,085	0	42,508	5,530	97,995	3,585
2003	29	205,931	15,199	0	25,856	0	6,199	3,188	48,576	6,071	99,404	1,438
2004	37	198,224	16,252	0	17,487	0	7,879	0	53,169	5,947	94,059	3,431
2005	38	188,275	15,034	0	23,136	0	6,732	0	55,543	1,554	85,495	781
2006	40	185,620	22,188	0	27,060	0	5,447	0	53,735	3,341	71,728	2,121
2007	36	210,499	23,235	3	31,176	0	13,348	0	61,522	1,489	78,250	1,476

¹ OTHER includes DOT, AID, HUD, LABOR and NRC.

Source: National Science Foundation, Federal Support to Universities, Colleges, and Nonprofit Institutions, FY 1980-2007.

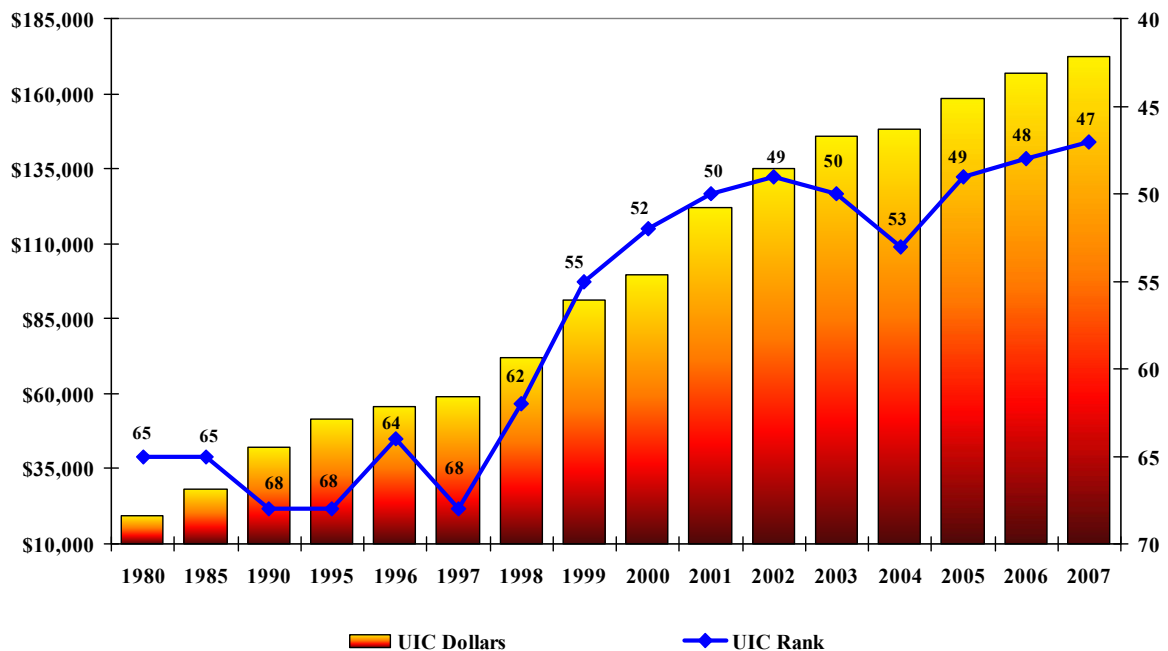
University of Illinois at Chicago Total Federal Obligations

(Dollars in Thousands)



Federal Obligations For Research and Development

(Dollars in Thousands)



Source: NSF, Federal Support to Universities, Colleges, and Nonprofit Institutions, FY 1980-2007.

University of Illinois at Chicago
Total Federal Obligations
By Agency
(Dollars in Thousands)

Fiscal Year	National Rank	Total Dollars	USDA	DOC	DOD	ED	DOE	EPA	HHS	NASA	NSF	OTHER ¹
1980	49	\$ 37,297	\$ 62	\$ 208	\$ 1,189	\$ 4,704	\$ 98	\$ 461	\$ 27,681	\$ 57	\$ 2,651	\$ 186
1985	65	42,393	155	150	4,293	9,672	832	475	25,219	177	1,420	0
1990	61	60,405	9	73	3,055	12,157	551	370	36,967	419	5,329	1,475
1995	71	69,781	205	0	2,632	13,766	770	292	42,759	400	8,957	0
1996	69	61,552	0	50	3,837	2,444	1,089	52	45,367	437	8,240	36
1997	73	65,237	185	235	2,141	3,026	994	70	48,058	498	9,930	100
1998	61	81,907	0	100	1,494	3,720	1,586	865	62,046	600	11,246	250
1999	54	103,887	160	123	3,116	3,727	2,690	58	75,427	1,108	16,128	1,350
2000	54	111,829	0	181	2,354	0	1,904	292	91,075	922	14,802	299
2001	51	137,062	200	207	3,424	0	1,485	940	108,012	1,099	21,050	645
2002	50	146,861	0	1,968	6,334	0	2,601	3,570	114,766	852	16,399	371
2003	51	156,138	150	1,321	2,580	0	3,146	0	131,969	1,037	14,841	1,094
2004	50	164,479	0	1,279	3,559	0	2,493	0	137,765	863	17,161	1,359
2005	48	172,668	1,000	1,392	6,964	0	4,600	1,703	139,216	600	16,187	1,006
2006	45	182,528	0	1,928	7,075	0	4,546	0	149,854	224	16,594	2,307
2007	48	188,891	0	1,232	15,194	0	3,456	2,110	146,334	1,230	19,225	110

Federal Obligations For Research & Development
By Agency
(Dollars in Thousands)

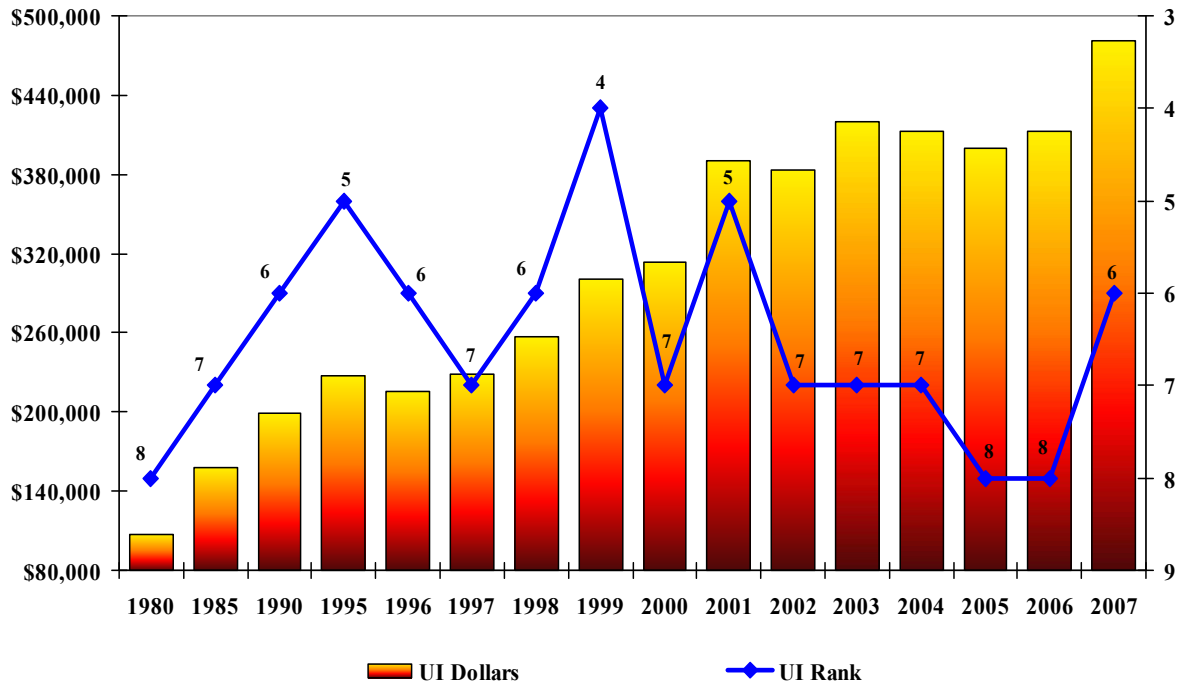
Fiscal Year	National Rank	Total Dollars	USDA	DOC	DOD	ED	DOE	EPA	HHS	NASA	NSF	OTHER ¹
1980	65	\$ 19,373	\$ 62	\$ 208	\$ 1,189	\$ 912	\$ 98	\$ 461	\$ 13,737	\$ 57	\$ 2,463	\$ 186
1985	65	28,172	155	150	4,293	243	832	475	20,443	159	1,422	0
1990	68	42,293	9	0	3,050	759	541	301	30,429	419	5,310	1,475
1995	68	51,428	205	0	2,627	1,450	770	230	37,794	378	7,974	0
1996	64	55,833	0	50	3,566	2,444	1,069	0	41,177	371	7,131	25
1997	68	58,852	185	110	2,081	2,780	994	0	44,476	410	7,716	100
1998	62	72,160	0	0	1,489	3,003	1,586	814	56,178	512	8,328	250
1999	55	91,374	160	23	3,007	2,991	2,603	0	66,867	1,064	13,309	1,350
2000	52	99,629	0	64	2,354	0	1,904	178	82,166	900	11,764	299
2001	50	122,061	200	76	3,221	0	1,485	725	96,931	1,099	17,679	645
2002	49	135,075	0	949	6,091	0	2,601	3,277	105,959	828	14,999	371
2003	50	145,817	150	1,196	2,053	0	3,146	0	124,921	987	12,321	1,043
2004	53	148,350	0	600	3,253	0	2,493	0	125,725	863	14,144	1,272
2005	49	158,342	750	697	6,888	0	4,600	1,531	129,610	600	12,660	1,006
2006	48	166,654	0	965	7,075	0	4,546	0	138,108	224	13,533	2,203
2007	47	172,492		617	15,019	0	3,456	2,059	134,906	1,230	15,115	90

¹ OTHER includes DOT, AID, HUD, LABOR and NRC.

Source: National Science Foundation, Federal Support to Universities, Colleges, and Nonprofit Institutions, FY 1980-2007.

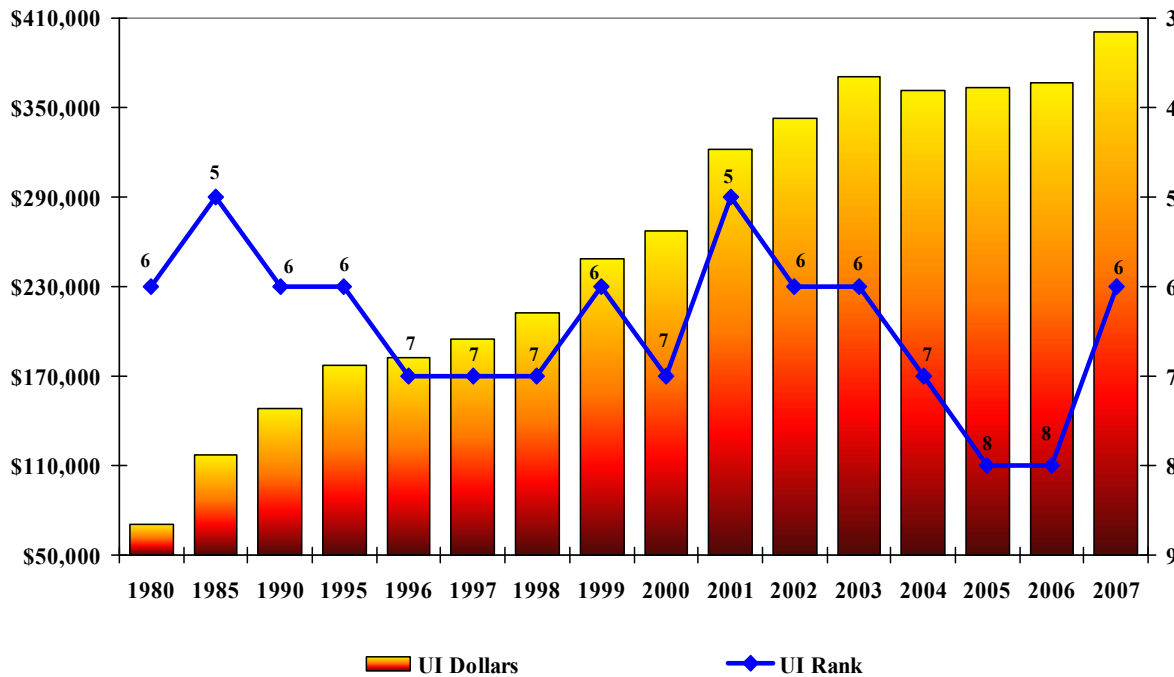
University of Illinois – System Total Federal Obligations

(Dollars in Thousands)



Federal Obligations For Research and Development

(Dollars in Thousands)



Source: NSF, Federal Support to Universities, Colleges, and Nonprofit Institutions, FY 1980-2007.

University of Illinois System
Total Federal Obligations
By Agency
(Dollars in Thousands)

Fiscal Year	National Rank	Total Dollars	USDA	DOC	DOD	ED	DOE	EPA	HHS	NASA	NSF	OTHER ¹
1980	8	\$ 107,569	\$ 13,106	\$ 691	\$ 8,017	\$13,591	\$ 6,047	\$ 1,697	\$ 40,263	\$ 1,310	\$ 20,327	\$ 2,520
1985	7	157,493	18,417	1,208	15,077	22,547	11,087	2,252	43,110	3,025	37,458	3,312
1990	6	198,806	19,984	1,602	21,470	23,698	13,600	1,483	55,515	4,422	54,143	2,889
1995	5	227,261	23,622	2,468	25,859	15,656	11,976	1,578	70,069	5,389	68,328	2,316
1996	6	215,537	20,616	666	27,676	4,655	13,334	774	74,836	5,414	66,627	939
1997	7	228,969	22,171	1,856	27,078	4,460	13,757	3,127	79,787	5,801	69,261	1,671
1998	6	256,790	23,439	646	25,576	4,972	13,630	3,529	93,883	5,209	83,659	2,247
1999	4	300,029	23,946	517	30,094	5,715	15,349	2,177	112,517	6,377	99,397	3,940
2000	7	314,022	29,742	552	23,889	1,149	14,174	962	131,246	4,970	103,671	3,667
2001	5	390,745	29,556	342	29,013	3,561	17,269	2,318	153,383	6,383	143,230	5,690
2002	7	382,856	26,514	2,193	31,298	2,650	16,710	3,570	164,280	7,049	123,800	4,792
2003	7	420,316	27,915	1,881	28,636	7,890	18,982	3,254	187,003	7,757	131,185	5,813
2004	7	412,279	28,362	1,558	21,751	3,162	18,625	0	198,271	8,167	126,345	6,038
2005	8	399,627	28,602	1,860	30,780	3,456	19,647	1,703	199,468	5,897	105,712	2,502
2006	8	412,352	34,216	2,330	35,184	4,486	19,969	0	207,577	3,667	100,435	4,488
2007	6	481,122	36,923	1,565	47,123	7,658	29,467	2,110	212,070	2,719	139,105	2,382

Federal Obligations For Research & Development
By Agency
(Dollars in Thousands)

Fiscal Year	National Rank	Total Dollars	USDA	DOC	DOD	ED	DOE	EPA	HHS	NASA	NSF	OTHER ¹
1980	6	\$ 70,918	\$ 5,167	\$ 668	\$ 8,017	\$ 2,998	\$ 5,778	\$ 1,688	\$ 23,970	\$ 1,310	\$ 19,074	\$ 2,248
1985	5	117,618	7,066	1,208	14,357	2,959	10,902	2,244	36,036	3,007	36,562	3,277
1990	6	148,412	7,365	1,500	21,465	1,259	13,347	1,414	47,408	4,342	47,423	2,889
1995	6	177,384	11,102	891	24,782	1,625	11,852	1,440	63,173	4,483	56,034	2,002
1996	7	182,358	8,511	373	26,703	2,602	13,314	660	68,878	4,634	55,956	727
1997	7	194,874	10,240	1,438	26,463	2,780	13,757	2,958	73,833	5,072	56,784	1,549
1998	7	212,202	11,249	546	23,358	3,308	13,630	3,356	84,946	4,423	65,139	2,247
1999	6	248,619	11,824	366	28,706	3,476	15,262	1,992	100,768	5,660	76,625	3,940
2000	7	267,293	15,982	404	23,759	883	14,174	661	118,942	4,294	84,527	3,667
2001	5	322,456	15,629	208	28,611	2,634	17,269	1,586	136,948	5,789	108,092	5,690
2002	6	342,944	13,892	1,174	30,589	1,326	16,710	3,277	151,832	6,358	112,994	4,792
2003	6	370,918	15,349	1,756	27,909	6,566	18,982	3,188	175,904	7,058	111,725	2,481
2004	7	361,622	16,252	817	20,980	3,162	18,625	0	180,631	8,167	108,203	4,785
2005	8	362,955	15,784	1,095	30,037	3,236	19,647	1,531	185,408	5,897	98,373	1,947
2006	8	366,058	22,188	1,270	34,460	2,571	19,969	0	192,098	3,667	85,451	4,384
2007	6	400,841	23,402	888	46,361	4,109	29,467	2,059	196,428	2,719	93,365	2,043

¹OTHER includes DOT, AID, HUD, LABOR and NRC.

Source: National Science Foundation, Federal Support to Universities, Colleges, and Nonprofit Institutions, FY 1980-2007.

